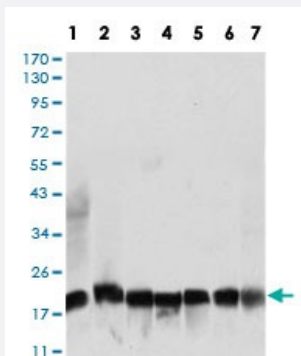


RPL18A monoclonal antibody, clone 6G6G10

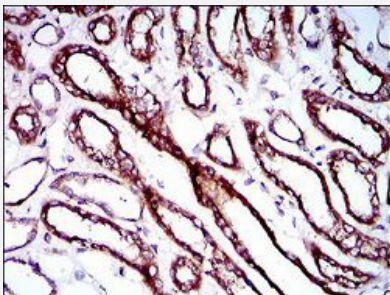
Catalog # MAB17807 Size 100 uL

Applications



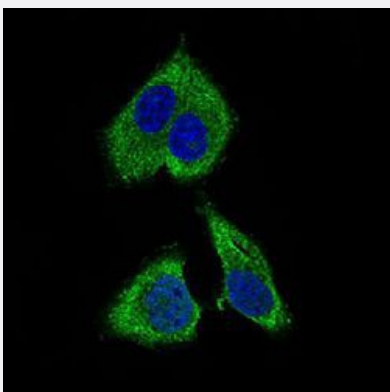
Western Blot (Cell lysate)

Western blot analysis of (1) NIH/3T3 cell, (2) HEK293 cell, (3) HL60 cell, (4) Jurkat cell, (5) Raji cell, (6) MOLT4 cell, (7) HeLa cell with RPL18A monoclonal antibody.



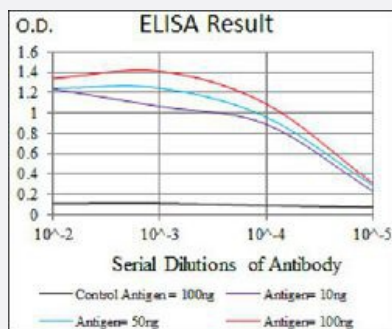
Immunohistochemistry (Formalin/PFA-fixed paraffin-embedded sections)

Immunohistochemical staining of paraffin-embedded kidney tissue with RPL18A monoclonal antibody.



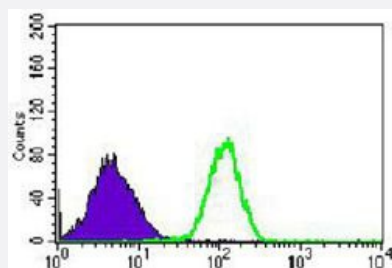
Immunocytochemistry

Immunocytochemical staining of HepG2 cells with RPL18A monoclonal antibody (green). DRAQ5 fluorescent DNA dye (blue). Actin filaments labeled with Alexa Fluor-555 phalloidin (red).



Enzyme-linked Immunoabsorbent Assay

ELISA analysis of RPL18A monoclonal antibody, clone 6G6G10.



Flow Cytometry

Flow cytometric analysis of HEK293 cells with RPL18A monoclonal antibody (green) and negative control (purple).

Specification

Product Description	Mouse monoclonal antibody raised against recombinant human RPL18A.
Immunogen	Recombinant protein corresponding to amino acids 50-176 of human RPL18A from <i>E. coli</i> .
Host	Mouse
Theoretical MW (kDa)	20.8
Reactivity	Human, Mouse
Form	Liquid
Isotype	IgG1
Recommend Usage	ELISA (1:10000) Flow Cytometry (1:200-1:400) Immunocytochemistry (1:200-1:1000) Immunohistochemistry (1:200-1:1000) Western Blot (1:500-1:2000) The optimal working dilution should be determined by the end user.
Storage Buffer	In ascites (0.03% sodium azide).
Storage Instruction	Store at 4°C. For long term storage store at -20°C. Aliquot to avoid repeated freezing and thawing.

Note

This product contains sodium azide: a POISONOUS AND HAZARDOUS SUBSTANCE which should be handled by trained staff only.

Applications

- Western Blot (Cell lysate)

Western blot analysis of (1) NIH/3T3 cell, (2) HEK293 cell, (3) HL60 cell, (4) Jurkat cell, (5) Raji cell, (6) MOLT4 cell, (7) HeLa cell with RPL18A monoclonal antibody.

- Immunohistochemistry (Formalin/PFA-fixed paraffin-embedded sections)

Immunohistochemical staining of paraffin-embedded kidney tissue with RPL18A monoclonal antibody.

- Immunocytochemistry

Immunocytochemical staining of HepG2 cells with RPL18A monoclonal antibody (green). DRAQ5 fluorescent DNA dye (blue). Actin filaments labeled with Alexa Fluor-555 phalloidin (red).

- Enzyme-linked Immunoabsorbent Assay

ELISA analysis of RPL18A monoclonal antibody, clone 6G6G10.

- Flow Cytometry

Flow cytometric analysis of HEK293 cells with RPL18A monoclonal antibody (green) and negative control (purple).

Gene Info — RPL18A

Entrez GeneID [6142](#)

Gene Name RPL18A

Gene Alias -

Gene Description ribosomal protein L18a

Omim ID [604178](#)

Gene Ontology [Hyperlink](#)

Gene Summary

Ribosomes, the organelles that catalyze protein synthesis, consist of a small 40S subunit and a large 60S subunit. Together these subunits are composed of 4 RNA species and approximately 80 structurally distinct proteins. This gene encodes a ribosomal protein that is a component of the 60S subunit. The protein belongs to the L18AE family of ribosomal proteins. It is located in the cytoplasm. This gene is co-transcribed with the U68 snoRNA, which is located in its third intron. As is typical for genes encoding ribosomal proteins, there are multiple processed pseudogenes of this gene dispersed through the genome. [provided by RefSeq]

Other Designations

60S ribosomal protein L18a|ribosomal protein L18a-like protein

Pathway

- [Ribosome](#)