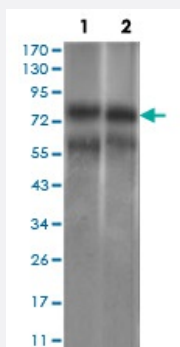


GUCY1A3 monoclonal antibody, clone 3G6B2

Catalog # MAB17805

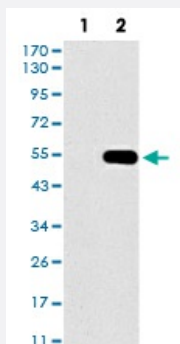
Size 100 uL

Applications



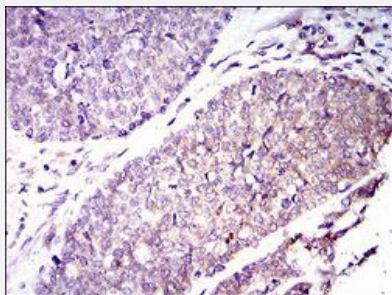
Western Blot (Cell lysate)

Western blot analysis of (1) HEK293 cell, (2) Jurkat cell with GUCY1A3 monoclonal antibody.



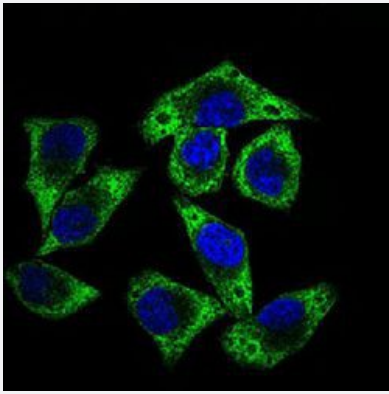
Western Blot (Transfected lysate)

Western blot analysis of (1) HEK293 cells, (2) GUCY1A3-hlgGfC transfected HEK293 cell lysate with GUCY1A3 monoclonal antibody.



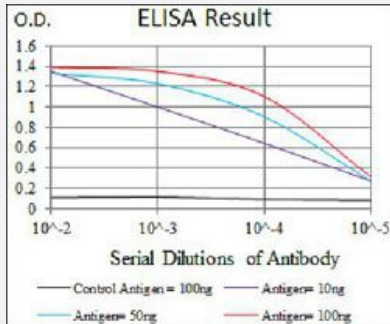
Immunohistochemistry (Formalin/PFA-fixed paraffin-embedded sections)

Immunohistochemical staining of paraffin-embedded esophageal cancer tissue with GUCY1A3 monoclonal antibody.



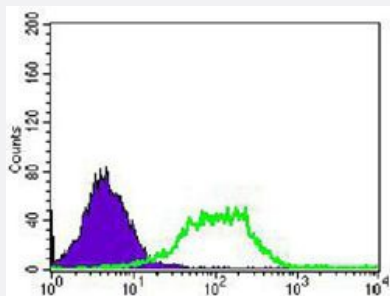
Immunocytochemistry

Immunocytochemical staining of HepG2 cells with GUCY1A3 monoclonal antibody (green). DRAQ5 fluorescent DNA dye (blue). Actin filaments labeled with Alexa Fluor-555 phalloidin (red).



Enzyme-linked Immunoabsorbent Assay

ELISA analysis of GUCY1A3 monoclonal antibody, clone 3G6B2.



Flow Cytometry

Flow cytometric analysis of HEK293 cells with GUCY1A3 monoclonal antibody (green) and negative control (purple).

Specification

Product Description	Mouse monoclonal antibody raised against recombinant human GUCY1A3.
Immunogen	Recombinant protein corresponding to amino acids 22-214 of human GUCY1A3 from <i>E. coli</i> .
Host	Mouse
Theoretical MW (kDa)	77.5
Reactivity	Human
Form	Liquid
Isotype	IgG1

Recommend Usage	ELISA (1:10000) Flow Cytometry (1:200-1:400) Immunocytochemistry (1:200-1:1000) Immunohistochemistry (1:200-1:1000) Western Blot (1:500-1:2000) The optimal working dilution should be determined by the end user.
Storage Buffer	In ascites (0.03% sodium azide).
Storage Instruction	Store at 4°C. For long term storage store at -20°C. Aliquot to avoid repeated freezing and thawing.
Note	This product contains sodium azide: a POISONOUS AND HAZARDOUS SUBSTANCE which should be handled by trained staff only.

Applications

- Western Blot (Cell lysate)

Western blot analysis of (1) HEK293 cell, (2) Jurkat cell with GUCY1A3 monoclonal antibody.

- Western Blot (Transfected lysate)

Western blot analysis of (1) HEK293 cells, (2) GUCY1A3-hlgGfc transfected HEK293 cell lysate with GUCY1A3 monoclonal antibody.

- Immunohistochemistry (Formalin/PFA-fixed paraffin-embedded sections)

Immunohistochemical staining of paraffin-embedded esophageal cancer tissue with GUCY1A3 monoclonal antibody.

- Immunocytochemistry

Immunocytochemical staining of HepG2 cells with GUCY1A3 monoclonal antibody (green). DRAQ5 fluorescent DNA dye (blue). Actin filaments labeled with Alexa Fluor-555 phalloidin (red).

- Enzyme-linked Immunoabsorbent Assay

ELISA analysis of GUCY1A3 monoclonal antibody, clone 3G6B2.

- Flow Cytometry

Flow cytometric analysis of HEK293 cells with GUCY1A3 monoclonal antibody (green) and negative control (purple).

Gene Info — GUCY1A3

Entrez GeneID [2982](#)

Gene Name GUCY1A3

Gene Alias	GC-SA3, GUC1A3, GUCA3, GUCSA3, GUCY1A1
Gene Description	guanylate cyclase 1, soluble, alpha 3
Omim ID	139396
Gene Ontology	Hyperlink
Gene Summary	Soluble guanylate cyclase (sGC), a heterodimeric protein consisting of an alpha subunit, such as alpha-1 (GUCY1A3), and a beta subunit, typically beta-1 (GUCY1B3; MIM 139397), catalyzes conversion of GTP to the second messenger cGMP and functions as the main receptor for nitric oxide and nitrovasodilator drugs (Zabel et al., 1998 [PubMed 9742212]).[supplied by OMIM]
Other Designations	GC-S-alpha-1 soluble guanylate cyclase large subunit

Pathway

- [Gap junction](#)
- [Long-term depression](#)
- [Purine metabolism](#)
- [Vascular smooth muscle contraction](#)