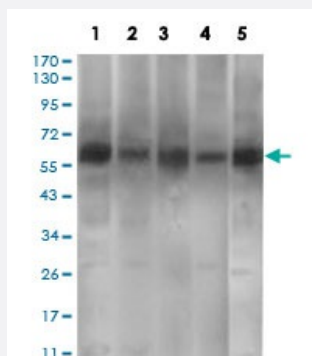


PDE1B monoclonal antibody, clone 10B10B12

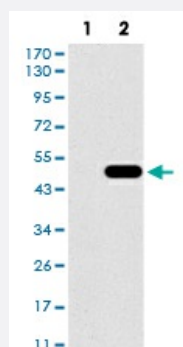
Catalog # MAB17804 Size 100 ug

Applications



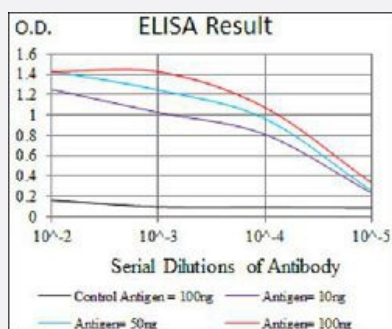
Western Blot (Cell lysate)

Western blot analysis of (1) A549 cell, (2) SK-MES-1 cell, (3) mouse brain tissue, (4) PC-12 cell, (5) 3T3L1 cell with PDE1B monoclonal antibody.



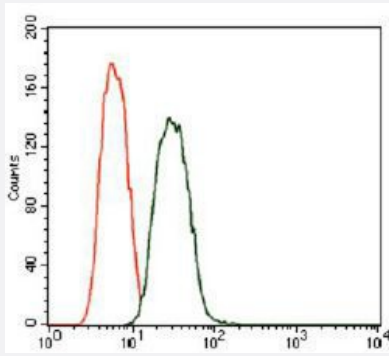
Western Blot (Transfected lysate)

Western blot analysis of (1) HEK293 cells, (2) PDE1B-hlgGfc transfected HEK293 cell lysate with PDE1B monoclonal antibody.



Enzyme-linked Immunoabsorbent Assay

ELISA analysis of PDE1B monoclonal antibody, clone 10B10B12.



Flow Cytometry

Flow cytometric analysis of A549 cells with PDE1B monoclonal antibody (green) and negative control (red).

Specification

Product Description	Mouse monoclonal antibody raised against recombinant human PDE1B.
Immunogen	Recombinant protein corresponding to amino acids 370-536 of human PDE1B from <i>E. coli</i> .
Host	Mouse
Theoretical MW (kDa)	61.4
Reactivity	Human, Monkey, Mouse
Form	Liquid
Isotype	IgG1
Recommend Usage	ELISA (1:10000) Flow Cytometry (1:200-1:400) Immunocytochemistry Immunohistochemistry Western Blot (1:500-1:2000) The optimal working dilution should be determined by the end user.
Storage Buffer	In PBS (0.05% sodium azide).
Storage Instruction	Store at 4°C. For long term storage store at -20°C. Aliquot to avoid repeated freezing and thawing.
Note	This product contains sodium azide: a POISONOUS AND HAZARDOUS SUBSTANCE which should be handled by trained staff only.

Applications

- Western Blot (Cell lysate)

Western blot analysis of (1) A549 cell, (2) SK-MES-1 cell, (3) mouse brain tissue, (4) PC-12 cell, (5) 3T3L1 cell with PDE1B monoclonal antibody.

- Western Blot (Transfected lysate)

Western blot analysis of (1) HEK293 cells, (2) PDE1B-hlgGfc transfected HEK293 cell lysate with PDE1B monoclonal antibody.

- Enzyme-linked Immunoabsorbent Assay

ELISA analysis of PDE1B monoclonal antibody, clone 10B10B12.

- Flow Cytometry

Flow cytometric analysis of A549 cells with PDE1B monoclonal antibody (green) and negative control (red).

Gene Info — PDE1B

Entrez GeneID	5153
---------------	----------------------

Gene Name	PDE1B
-----------	-------

Gene Alias	PDE1B1, PDES1B
------------	----------------

Gene Description	phosphodiesterase 1B, calmodulin-dependent
------------------	--

Omim ID	171891
---------	------------------------

Gene Ontology	Hyperlink
---------------	---------------------------

Gene Summary	O
--------------	---

Other Designations	Phosphodiesterase-1B calcium/calmodulin-stimulated cyclic nucleotide phosphodiesterase calmodulin-stimulated phosphodiesterase PDE1B1 phosphodiesterase 1B, calmodulin-dependent presumed 63kDa form of the type 1 cyclic nucleotide phosphodiesterase family k
--------------------	---

Pathway

- [Calcium signaling pathway](#)

- [Purine metabolism](#)

Disease

- [Cardiovascular Diseases](#)
- [Diabetes Mellitus](#)
- [Edema](#)