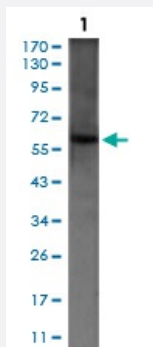


# PDE1B monoclonal antibody, clone 5C4A3

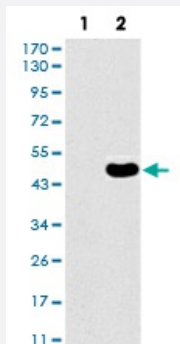
Catalog # MAB17802      Size 100 ug

## Applications



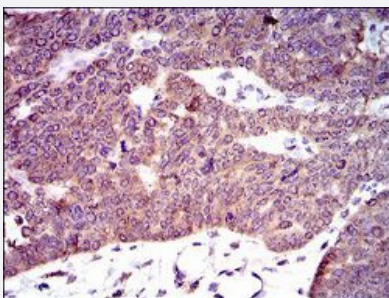
### Western Blot (Cell lysate)

Western blot analysis of PC-12 cell with PDE1B monoclonal antibody.



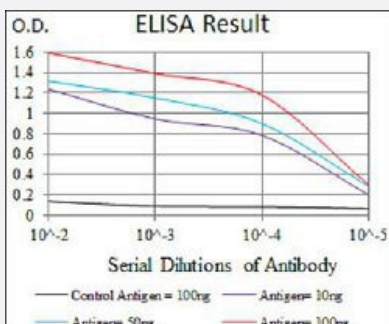
### Western Blot (Transfected lysate)

Western blot analysis of (1) HEK293 cells, (2) PDE1B-hlgGfC transfected HEK293 cell lysate with PDE1B monoclonal antibody.



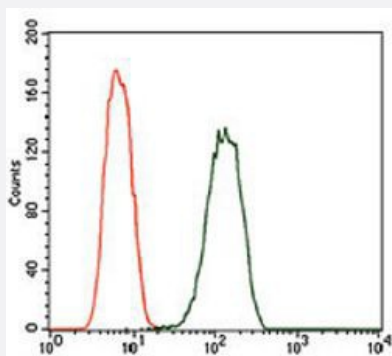
### Immunohistochemistry (Formalin/PFA-fixed paraffin-embedded sections)

Immunohistochemical staining of paraffin-embedded ovarian cancer tissue with PDE1B monoclonal antibody.



### Enzyme-linked Immunoabsorbent Assay

ELISA analysis of PDE1B monoclonal antibody, clone 5C4A3.



## Flow Cytometry

Flow cytometric analysis of A549 cells with PDE1B monoclonal antibody (green) and negative control (red).

## Specification

<b>Product Description</b>	Mouse monoclonal antibody raised against recombinant human PDE1B.
<b>Immunogen</b>	Recombinant protein corresponding to amino acids 370-536 of human PDE1B from <i>E. coli</i> .
<b>Host</b>	Mouse
<b>Theoretical MW (kDa)</b>	61.4
<b>Reactivity</b>	Human, Rat
<b>Form</b>	Liquid
<b>Isotype</b>	IgG1
<b>Recommend Usage</b>	ELISA (1:10000) Flow Cytometry (1:200-1:400) Immunocytochemistry Immunohistochemistry (1:200-1:1000) Western Blot (1:500-1:2000) The optimal working dilution should be determined by the end user.
<b>Storage Buffer</b>	In PBS (0.05% sodium azide).
<b>Storage Instruction</b>	Store at 4°C. For long term storage store at -20°C. Aliquot to avoid repeated freezing and thawing.
<b>Note</b>	This product contains sodium azide: a POISONOUS AND HAZARDOUS SUBSTANCE which should be handled by trained staff only.

## Applications

- Western Blot (Cell lysate)

Western blot analysis of PC-12 cell with PDE1B monoclonal antibody.

- Western Blot (Transfected lysate)

Western blot analysis of (1) HEK293 cells, (2) PDE1B-hlgGfc transfected HEK293 cell lysate with PDE1B monoclonal antibody.

- Immunohistochemistry (Formalin/PFA-fixed paraffin-embedded sections)

Immunohistochemical staining of paraffin-embedded ovarian cancer tissue with PDE1B monoclonal antibody.

- Enzyme-linked Immunoabsorbent Assay

ELISA analysis of PDE1B monoclonal antibody, clone 5C4A3.

- Flow Cytometry

Flow cytometric analysis of A549 cells with PDE1B monoclonal antibody (green) and negative control (red).

## Gene Info — PDE1B

**Entrez GeneID** [5153](#)

**Gene Name** PDE1B

**Gene Alias** PDE1B1, PDES1B

**Gene Description** phosphodiesterase 1B, calmodulin-dependent

**Omim ID** [171891](#)

**Gene Ontology** [Hyperlink](#)

**Gene Summary** O

**Other Designations** Phosphodiesterase-1B|calcium/calmodulin-stimulated cyclic nucleotide phosphodiesterase|calmodulin-stimulated phosphodiesterase PDE1B1|phosphodiesterase 1B, calmodulin-dependent|presumed 63kDa form of the type 1 cyclic nucleotide phosphodiesterase family k

## Pathway

- [Calcium signaling pathway](#)

- [Purine metabolism](#)

## Disease

- [Cardiovascular Diseases](#)
- [Diabetes Mellitus](#)
- [Edema](#)