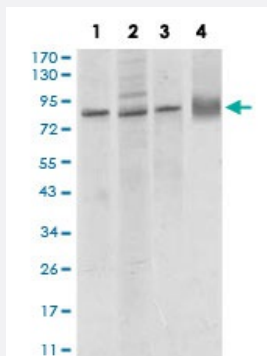


# CDH5 monoclonal antibody, clone 3D5C7

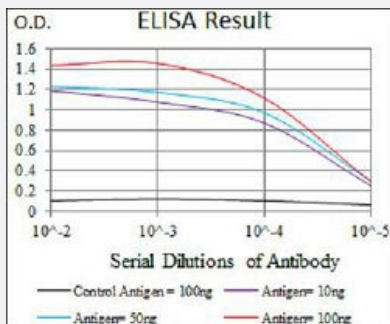
Catalog # MAB17796      Size 100 ug

## Applications



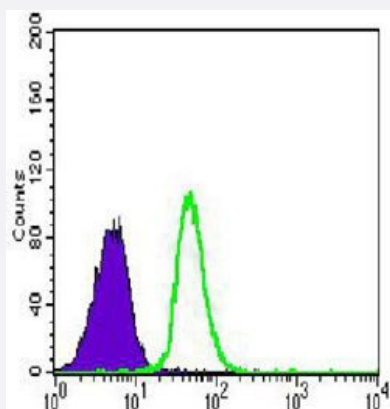
### Western Blot (Cell lysate)

Western blot analysis of (1) MCF-7 cell, (2) A549 cell, (3) HUVE-12 cell, (4) rat lung tissue with CDH5 monoclonal antibody.



### Enzyme-linked Immunoabsorbent Assay

ELISA analysis of CDH5 monoclonal antibody, clone 3D5C7.



### Flow Cytometry

Flow cytometric analysis of Jurkat cells with CDH5 monoclonal antibody (green) and negative control (purple).

## Specification

Product Description	Mouse monoclonal antibody raised against recombinant human CDH5.
Immunogen	Recombinant protein corresponding to amino acids 29-223 of human CDH5 from <i>E. coli</i> .
Host	Mouse
Theoretical MW (kDa)	87.5
Reactivity	Human, Rat
Form	Liquid
Isotype	IgG1
Recommend Usage	ELISA (1:10000) Flow Cytometry (1:200-1:400) Immunocytochemistry Immunohistochemistry Western Blot (1:500-1:2000) The optimal working dilution should be determined by the end user.
Storage Buffer	In PBS (0.05% sodium azide).
Storage Instruction	Store at 4°C. For long term storage store at -20°C. Aliquot to avoid repeated freezing and thawing.
Note	This product contains sodium azide: a POISONOUS AND HAZARDOUS SUBSTANCE which should be handled by trained staff only.

## Applications

- Western Blot (Cell lysate)

Western blot analysis of (1) MCF-7 cell, (2) A549 cell, (3) HUVE-12 cell, (4) rat lung tissue with CDH5 monoclonal antibody.

- Enzyme-linked Immunoabsorbent Assay

ELISA analysis of CDH5 monoclonal antibody, clone 3D5C7.

- Flow Cytometry

Flow cytometric analysis of Jurkat cells with CDH5 monoclonal antibody (green) and negative control (purple).

## Gene Info — CDH5

Entrez GeneID [1003](#)

Gene Name CDH5

Gene Alias	7B4, CD144, FLJ17376
Gene Description	cadherin 5, type 2 (vascular endothelium)
Omim ID	<a href="#">601120</a>
Gene Ontology	<a href="#">Hyperlink</a>
Gene Summary	<p>This gene is a classical cadherin from the cadherin superfamily and is located in a six-cadherin cluster in a region on the long arm of chromosome 16 that is involved in loss of heterozygosity events in breast and prostate cancer. The encoded protein is a calcium-dependent cell-cell adhesion glycoprotein comprised of five extracellular cadherin repeats, a transmembrane region and a highly conserved cytoplasmic tail. Functioning as a classic cadherin by imparting to cells the ability to adhere in a homophilic manner, the protein may play an important role in endothelial cell biology through control of the cohesion and organization of the intercellular junctions. An alternative splice variant has been described but its full length sequence has not been determined. [provided by RefSeq]</p>
Other Designations	7B4 antigen VE-cadherin cadherin 5, type 2 cadherin 5, type 2, VE-cadherin (vascular epithelium) cd144 antigen endothelial-specific cadherin vascular endothelial cadherin

## Pathway

- [Cell adhesion molecules \(CAMs\)](#)
- [Leukocyte transendothelial migration](#)

## Disease

- [Cardiovascular Diseases](#)
- [Diabetes Mellitus](#)
- [Edema](#)