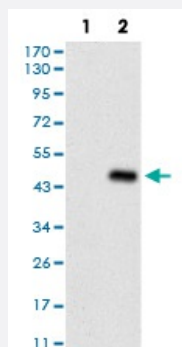


# SERPINA7 monoclonal antibody, clone 5B11E9

Catalog # MAB17778

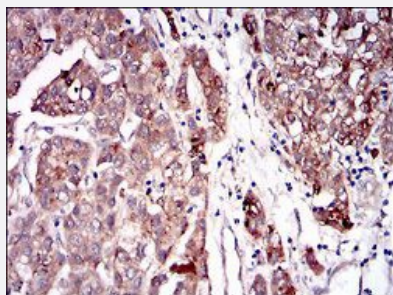
Size 100 ug

## Applications



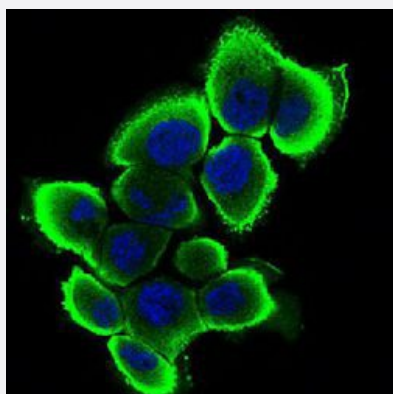
### Western Blot (Transfected lysate)

Western blot analysis of (1) HEK293 cells, (2) SERPINA7-hlgGfc transfected HEK293 cell lysate with SERPINA7 monoclonal antibody.



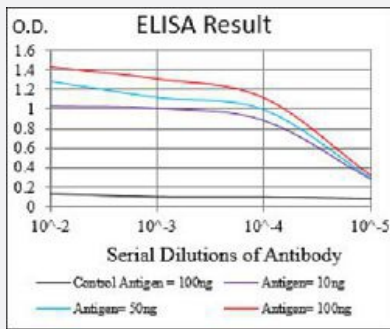
### Immunohistochemistry (Formalin/PFA-fixed paraffin-embedded sections)

Immunohistochemical staining of paraffin-embedded liver cancer tissue with SERPINA7 monoclonal antibody.



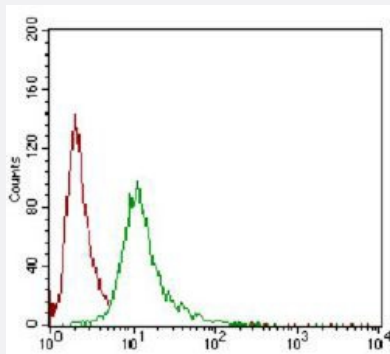
### Immunocytochemistry

Immunocytochemical staining of A431 cells with SERPINA7 monoclonal antibody (green). DRAQ5 fluorescent DNA dye (blue). Actin filaments labeled with Alexa Fluor-555 phalloidin (red).



## Enzyme-linked Immunoabsorbent Assay

ELISA analysis of SERPINA7 monoclonal antibody, clone 5B11E9.



## Flow Cytometry

Flow cytometric analysis of A431 cells with SERPINA7 monoclonal antibody (green) and negative control (red).

## Specification

<b>Product Description</b>	Mouse monoclonal antibody raised against recombinant human SERPINA7.
<b>Immunogen</b>	Recombinant protein corresponding to amino acids 168-302 of human SERPINA7 from <i>E. coli</i> .
<b>Host</b>	Mouse
<b>Theoretical MW (kDa)</b>	46.3
<b>Reactivity</b>	Human
<b>Form</b>	Liquid
<b>Isotype</b>	IgG1
<b>Recommend Usage</b>	ELISA (1:10000) Flow Cytometry (1:200-1:400) Immunocytochemistry (1:200-1:1000) Immunohistochemistry (1:200-1:1000) Western Blot (1:500-1:2000) The optimal working dilution should be determined by the end user.
<b>Storage Buffer</b>	In PBS (0.05% sodium azide).
<b>Storage Instruction</b>	Store at 4°C. For long term storage store at -20°C. Aliquot to avoid repeated freezing and thawing.

**Note**

This product contains sodium azide: a POISONOUS AND HAZARDOUS SUBSTANCE which should be handled by trained staff only.

## Applications

- Western Blot (Transfected lysate)

Western blot analysis of (1) HEK293 cells, (2) SERPINA7-hlgGfc transfected HEK293 cell lysate with SERPINA7 monoclonal antibody.

- Immunohistochemistry (Formalin/PFA-fixed paraffin-embedded sections)

Immunohistochemical staining of paraffin-embedded liver cancer tissue with SERPINA7 monoclonal antibody.

- Immunocytochemistry

Immunocytochemical staining of A431 cells with SERPINA7 monoclonal antibody (green). DRAQ5 fluorescent DNA dye (blue). Actin filaments labeled with Alexa Fluor-555 phalloidin (red).

- Enzyme-linked Immunoabsorbent Assay

ELISA analysis of SERPINA7 monoclonal antibody, clone 5B11E9.

- Flow Cytometry

Flow cytometric analysis of A431 cells with SERPINA7 monoclonal antibody (green) and negative control (red).

## Gene Info — SERPINA7

**Entrez GeneID** [6906](#)

**Gene Name** SERPINA7

**Gene Alias** TBG

**Gene Description** serpin peptidase inhibitor, clade A (alpha-1 antiproteinase, antitrypsin), member 7

**Omim ID** [314200](#)

**Gene Ontology** [Hyperlink](#)

**Gene Summary** serpin peptidase inhibitor

**Other Designations** OTTHUMP00000023778|OTTHUMP00000023779|alpha-1 antiproteinase, antitrypsin|serine (or cysteine) proteinase inhibitor, clade A (alpha-1 antiproteinase, antitrypsin), member 7|serine (or cysteine) proteinase inhibitor, clade A, member 7|thyroxin-binding glob