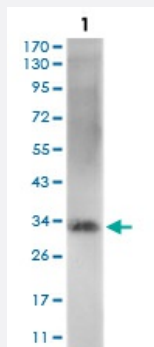


ZFP42 monoclonal antibody, clone 5E11A6

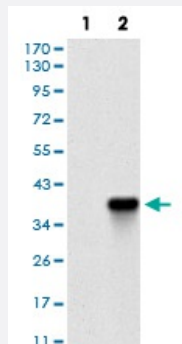
Catalog # MAB17760 Size 100 ug

Applications



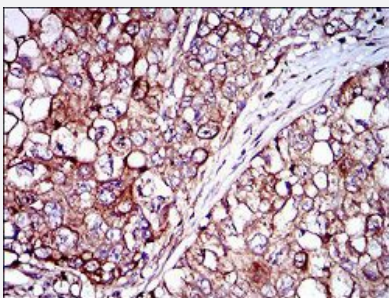
Western Blot (Cell lysate)

Western blot analysis of NIH/3T3 cell with ZFP42 monoclonal antibody.



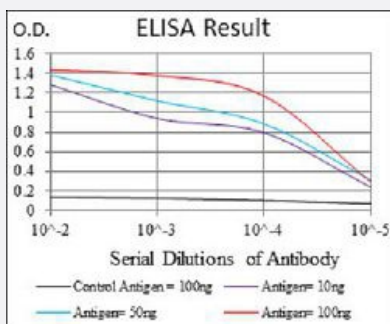
Western Blot (Transfected lysate)

Western blot analysis of (1) HEK293 cells, (2) ZFP42-hlgGfc transfected HEK293 cell lysate with ZFP42 monoclonal antibody.



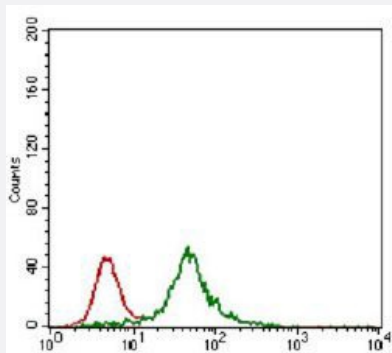
Immunohistochemistry (Formalin/PFA-fixed paraffin-embedded sections)

Immunohistochemical staining of paraffin-embedded lung cancer tissue with ZFP42 monoclonal antibody.



Enzyme-linked Immunoabsorbent Assay

ELISA analysis of ZFP42 monoclonal antibody, clone 5E11A6.



Flow Cytometry

Flow cytometric analysis of HEK293 cells with ZFP42 monoclonal antibody (green) and negative control (red).

Specification

Product Description	Mouse monoclonal antibody raised against recombinant human ZFP42.
Immunogen	Recombinant protein corresponding to amino acids 249-310 of human ZFP42 from <i>E. coli</i> .
Host	Mouse
Theoretical MW (kDa)	34.8
Reactivity	Human, Mouse
Form	Liquid
Isotype	IgG1
Recommend Usage	ELISA (1:10000) Flow Cytometry (1:200-1:400) Immunocytochemistry Immunohistochemistry (1:200-1:1000) Western Blot (1:500-1:2000) The optimal working dilution should be determined by the end user.
Storage Buffer	In PBS (0.05% sodium azide).
Storage Instruction	Store at 4°C. For long term storage store at -20°C. Aliquot to avoid repeated freezing and thawing.
Note	This product contains sodium azide: a POISONOUS AND HAZARDOUS SUBSTANCE which should be handled by trained staff only.

Applications

- Western Blot (Cell lysate)

Western blot analysis of NIH/3T3 cell with ZFP42 monoclonal antibody.

- Western Blot (Transfected lysate)

Western blot analysis of (1) HEK293 cells, (2) ZFP42-hlgGFc transfected HEK293 cell lysate with ZFP42 monoclonal antibody.

- Immunohistochemistry (Formalin/PFA-fixed paraffin-embedded sections)

Immunohistochemical staining of paraffin-embedded lung cancer tissue with ZFP42 monoclonal antibody.

- Enzyme-linked Immunoabsorbent Assay

ELISA analysis of ZFP42 monoclonal antibody, clone 5E11A6.

- Flow Cytometry

Flow cytometric analysis of HEK293 cells with ZFP42 monoclonal antibody (green) and negative control (red).

Gene Info — ZFP42

Entrez GeneID	132625
---------------	------------------------

Gene Name	ZFP42
-----------	-------

Gene Alias	REX1, ZNF754
------------	--------------

Gene Description	zinc finger protein 42 homolog (mouse)
------------------	--

Gene Ontology	Hyperlink
---------------	---------------------------

Other Designations	REX1 transcription factor zinc finger protein 42
--------------------	--