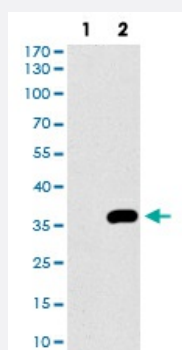


NRCAM monoclonal antibody, clone 7D8C5

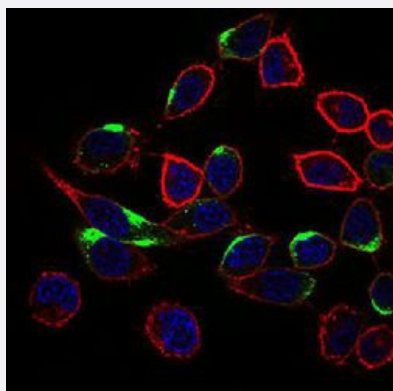
Catalog # MAB17758 Size 100 ug

Applications



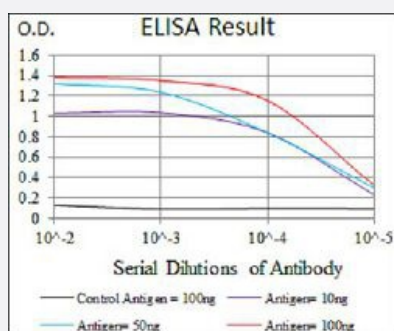
Western Blot (Transfected lysate)

Western blot analysis of (1) HEK293 cells, (2) NRCAM-hlgGfc transfected HEK293 cell lysate with NRCAM monoclonal antibody.



Immunocytochemistry

Immunocytochemical staining of HepG2 cells with NRCAM monoclonal antibody (green). DRAQ5 fluorescent DNA dye (blue). Actin filaments labeled with Alexa Fluor-555 phalloidin (red).



Enzyme-linked Immunoabsorbent Assay

ELISA analysis of NRCAM monoclonal antibody, clone 7D8C5.

Specification

Product Description

Mouse monoclonal antibody raised against recombinant human NRCAM.

| | |
|-----------------------------|--|
| Immunogen | Recombinant protein corresponding to amino acids 1192-1255 of human NRCAM from <i>E. coli</i> . |
| Host | Mouse |
| Theoretical MW (kDa) | 144 |
| Reactivity | Human |
| Form | Liquid |
| Isotype | IgG1 |
| Recommend Usage | ELISA (1:10000) Flow Cytometry Immunocytochemistry (1:50) Immunohistochemistry Western Blot (1:500-1:2000) The optimal working dilution should be determined by the end user. |
| Storage Buffer | In PBS (0.05% sodium azide). |
| Storage Instruction | Store at 4°C. For long term storage store at -20°C. Aliquot to avoid repeated freezing and thawing. |
| Note | This product contains sodium azide: a POISONOUS AND HAZARDOUS SUBSTANCE which should be handled by trained staff only. |

Applications

- Western Blot (Transfected lysate)

Western blot analysis of (1) HEK293 cells, (2) NRCAM-hlgGfc transfected HEK293 cell lysate with NRCAM monoclonal antibody.

- Immunocytochemistry

Immunocytochemical staining of HepG2 cells with NRCAM monoclonal antibody (green). DRAQ5 fluorescent DNA dye (blue). Actin filaments labeled with Alexa Fluor-555 phalloidin (red).

- Enzyme-linked Immunoabsorbent Assay

ELISA analysis of NRCAM monoclonal antibody, clone 7D8C5.

Gene Info — NRCAM

Entrez GeneID [4897](#)

Gene Name NRCAM

| | |
|--------------------|--|
| Gene Alias | KIAA0343, MGC 138845, MGC 138846 |
| Gene Description | neuronal cell adhesion molecule |
| Omim ID | 601581 |
| Gene Ontology | Hyperlink |
| Gene Summary | <p>Cell adhesion molecules (CAMs) are members of the immunoglobulin superfamily. This gene encodes a neuronal cell adhesion molecule with multiple immunoglobulin-like C2-type domains and fibronectin type-III domains. This ankyrin-binding protein is involved in neuron-neuron adhesion and promotes directional signaling during axonal cone growth. This gene is also expressed in non-neural tissues and may play a general role in cell-cell communication via signaling from its intracellular domain to the actin cytoskeleton during directional cell migration. Allelic variants of this gene have been associated with autism and addiction vulnerability. Alternative splicing results in multiple transcript variants encoding different isoforms. [provided by RefSeq]</p> |
| Other Designations | NgCAM-related cell adhesion molecule NrCAM bravo |

Pathway

- [Cell adhesion molecules \(CAMs\)](#)

Disease

- [Asperger Syndrome](#)
- [Attention Deficit Disorder with Hyperactivity](#)
- [Autistic Disorder](#)
- [Cognition](#)
- [Genetic Predisposition to Disease](#)
- [Learning](#)
- [Learning Disorders](#)
- [Mental Disorders](#)
- [NARP](#)
- [Obsessive-Compulsive Disorder](#)
- [Psychiatric Status Rating Scales](#)

- [Schizophrenia](#)
- [Social Perception](#)
- [Tobacco Use Disorder](#)