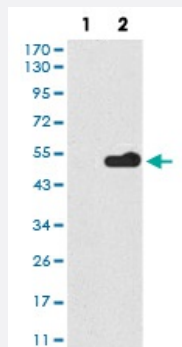


C20orf70 monoclonal antibody, clone 4C7D7

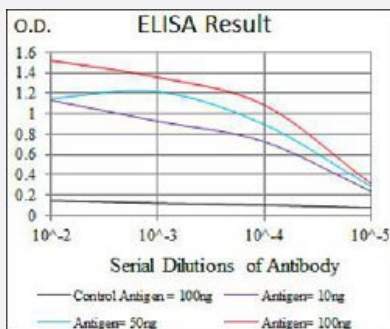
Catalog # MAB17751 Size 100 ug

Applications



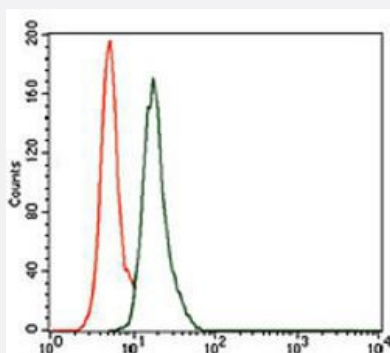
Western Blot (Transfected lysate)

Western blot analysis of (1) HEK293 cells, (2) C20orf70-hlgGfC transfected HEK293 cell lysate with C20orf70 monoclonal antibody.



Enzyme-linked Immunoabsorbent Assay

ELISA analysis of C20orf70 monoclonal antibody, clone 4C7D7.



Flow Cytometry

Flow cytometric analysis of A549 cells with C20orf70 monoclonal antibody (green) and negative control (red).

Specification

Product Description

Mouse monoclonal antibody raised against recombinant human C20orf70.

Immunogen	Recombinant protein corresponding to amino acids 16-250 of human C20orf70 from <i>E. coli</i> .
Host	Mouse
Theoretical MW (kDa)	27
Reactivity	Human
Form	Liquid
Isotype	IgG1
Recommend Usage	ELISA (1:10000) Flow Cytometry (1:200-1:400) Immunocytochemistry Immunohistochemistry Western Blot (1:500-1:2000) The optimal working dilution should be determined by the end user.
Storage Buffer	In PBS (0.05% sodium azide).
Storage Instruction	Store at 4°C. For long term storage store at -20°C. Aliquot to avoid repeated freezing and thawing.
Note	This product contains sodium azide: a POISONOUS AND HAZARDOUS SUBSTANCE which should be handled by trained staff only.

Applications

- Western Blot (Transfected lysate)

Western blot analysis of (1) HEK293 cells, (2) C20orf70-hlgGfC transfected HEK293 cell lysate with C20orf70 monoclonal antibody.

- Enzyme-linked Immunoabsorbent Assay

ELISA analysis of C20orf70 monoclonal antibody, clone 4C7D7.

- Flow Cytometry

Flow cytometric analysis of A549 cells with C20orf70 monoclonal antibody (green) and negative control (red).

Gene Info — C20orf70

Entrez GeneID [140683](#)

Gene Name C20orf70

Gene Alias	SPLUNC2, bA49G10.1
Gene Description	chromosome 20 open reading frame 70
Gene Ontology	Hyperlink
Gene Summary	lung and nasal epithelium carcinoma associated 2
Other Designations	OTTHUMP00000030628 OTTHUMP00000164442 parotid secretory protein short palate, lung and nasal epithelium carcinoma associated 2