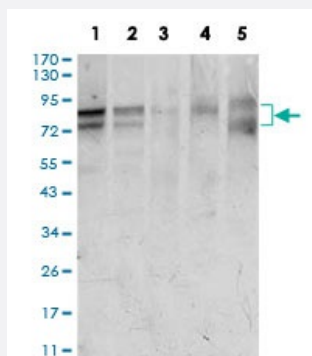


# FOXP1 monoclonal antibody, clone 6E4

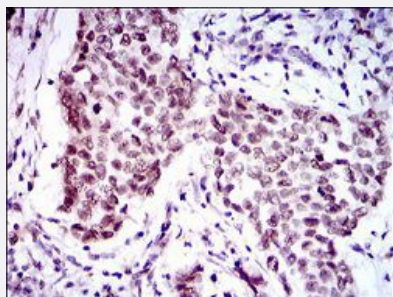
Catalog # MAB17744      Size 100 ug

## Applications



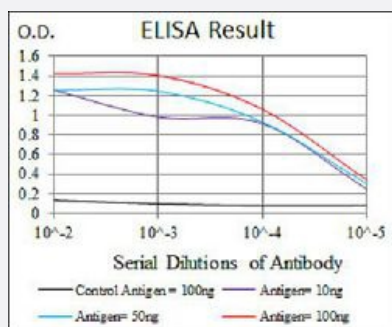
### Western Blot (Cell lysate)

Western blot analysis of (1) HeLa cell, (2) Jurkat cell, (3) MCF-7 cell, (4) T47D cell, (5) Raw264.7 cell with FOXP1 monoclonal antibody.



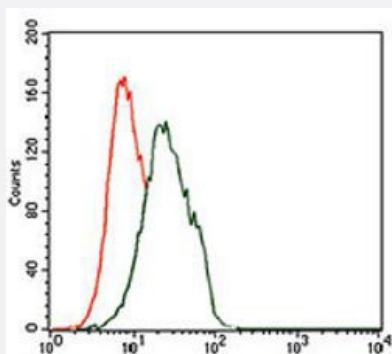
### Immunohistochemistry (Formalin/PFA-fixed paraffin-embedded sections)

Immunohistochemical staining of paraffin-embedded breast cancer tissue with FOXP1 monoclonal antibody.



### Enzyme-linked Immunoabsorbent Assay

ELISA analysis of FOXP1 monoclonal antibody, clone 6E4.



## Flow Cytometry

Flow cytometric analysis of Jurkat cells with FOXP1 monoclonal antibody (green) and negative control (red).

## Specification

Product Description	Mouse monoclonal antibody raised against recombinant human FOXP1.
Immunogen	Recombinant protein corresponding to amino acids 481-677 of human FOXP1 from <i>E. coli</i> .
Host	Mouse
Theoretical MW (kDa)	75.3
Reactivity	Human
Form	Liquid
Isotype	IgG1
Recommend Usage	ELISA (1:10000) Flow Cytometry (1:200-1:400) Immunocytochemistry Immunohistochemistry (1:200-1:1000) Western Blot (1:500-1:2000) The optimal working dilution should be determined by the end user.
Storage Buffer	In PBS (0.05% sodium azide).
Storage Instruction	Store at 4°C. For long term storage store at -20°C. Aliquot to avoid repeated freezing and thawing.
Note	This product contains sodium azide: a POISONOUS AND HAZARDOUS SUBSTANCE which should be handled by trained staff only.

## Applications

- Western Blot (Cell lysate)

Western blot analysis of (1) HeLa cell, (2) Jurkat cell, (3) MCF-7 cell, (4) T47D cell, (5) Raw264.7 cell with FOXP1 monoclonal antibody.

- Immunohistochemistry (Formalin/PFA-fixed paraffin-embedded sections)

Immunohistochemical staining of paraffin-embedded breast cancer tissue with FOXP1 monoclonal antibody.

- Enzyme-linked Immunoabsorbent Assay

ELISA analysis of FOXP1 monoclonal antibody, clone 6E4.

- Flow Cytometry

Flow cytometric analysis of Jurkat cells with FOXP1 monoclonal antibody (green) and negative control (red).

## Gene Info — FOXP1

Entrez GeneID [27086](#)

Gene Name FOXP1

Gene Alias 12CC4, FLJ23741, HSPC215, MGC12942, MGC88572, MGC99551, QRF1, hFKH1B

Gene Description forkhead box P1

Omim ID [605515](#)

Gene Ontology [Hyperlink](#)

**Gene Summary** This gene belongs to subfamily P of the forkhead box (FOX) transcription factor family. Forkhead box transcription factors play important roles in the regulation of tissue- and cell type-specific gene transcription during both development and adulthood. Forkhead box P1 protein contains both DNA-binding- and protein-protein binding-domains. This gene may act as a tumor suppressor as it is lost in several tumor types and maps to a chromosomal region (3p14.1) reported to contain a tumor suppressor gene(s). Alternative splicing results in multiple transcript variants encoding different isoforms. [provided by RefSeq]

**Other Designations** fork head-related protein like B|glutamine-rich factor 1

## Disease

- [Apraxias](#)

- [Cardiovascular Diseases](#)

- [Developmental Disabilities](#)
- [Diabetes Mellitus](#)
- [Edema](#)
- [Genetic Predisposition to Disease](#)
- [Tobacco Use Disorder](#)
- [Vitiligo](#)