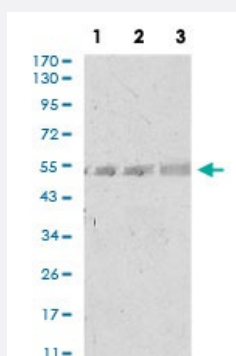


# SPIB monoclonal antibody, clone 4G5

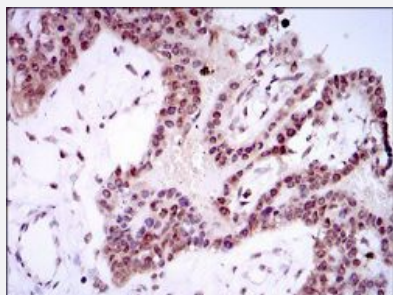
Catalog # MAB17740      Size 100 uL

## Applications



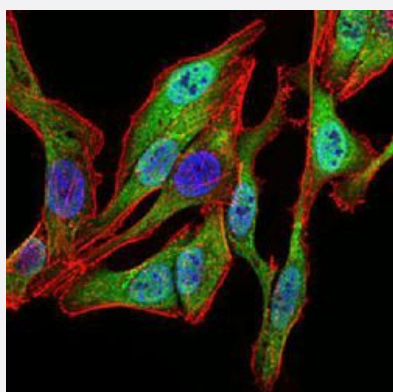
### Western Blot (Cell lysate)

Western blot analysis of (1) A549 cell, (2) PC-3 cell, (3) NIH/3T3 cell with SPIB monoclonal antibody.



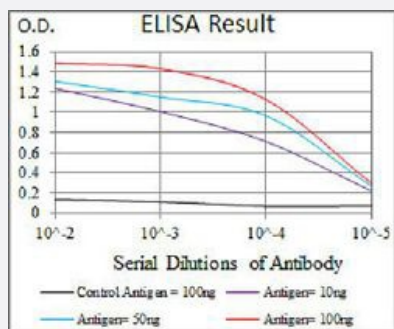
### Immunohistochemistry (Formalin/PFA-fixed paraffin-embedded sections)

Immunohistochemical staining of paraffin-embedded ovarian cancer tissue with SPIB monoclonal antibody.



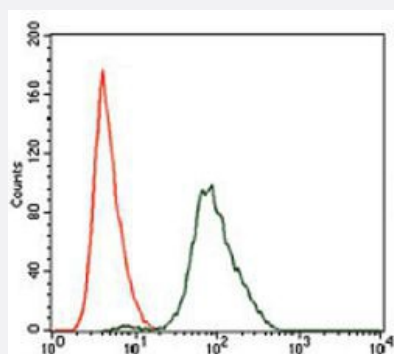
### Immunocytochemistry

Immunocytochemical staining of HeLa cells with SPIB monoclonal antibody (green). DRAQ5 fluorescent DNA dye (blue). Actin filaments labeled with Alexa Fluor-555 phalloidin (red).



## Enzyme-linked Immunoabsorbent Assay

ELISA analysis of SPIB monoclonal antibody, clone 4G5.



## Flow Cytometry

Flow cytometric analysis of NIH/3T3 cells with SPIB monoclonal antibody (green) and negative control (red).

## Specification

<b>Product Description</b>	Mouse monoclonal antibody raised against recombinant human SPIB.
<b>Immunogen</b>	Recombinant protein corresponding to amino acids 200-252 of human SPIB from <i>E. coli</i> .
<b>Host</b>	Mouse
<b>Theoretical MW (kDa)</b>	28.8
<b>Reactivity</b>	Human, Mouse
<b>Form</b>	Liquid
<b>Isotype</b>	IgG1
<b>Recommend Usage</b>	ELISA (1:10000) Flow Cytometry (1:200-1:400) Immunocytochemistry (1:200-1:1000) Immunohistochemistry (1:200-1:1000) Western Blot (1:500-1:2000) The optimal working dilution should be determined by the end user.
<b>Storage Buffer</b>	In ascites (0.03% sodium azide).
<b>Storage Instruction</b>	Store at 4°C. For long term storage store at -20°C. Aliquot to avoid repeated freezing and thawing.

**Note**

This product contains sodium azide: a POISONOUS AND HAZARDOUS SUBSTANCE which should be handled by trained staff only.

## Applications

- Western Blot (Cell lysate)

Western blot analysis of (1) A549 cell, (2) PC-3 cell, (3) NIH/3T3 cell with SPIB monoclonal antibody.

- Immunohistochemistry (Formalin/PFA-fixed paraffin-embedded sections)

Immunohistochemical staining of paraffin-embedded ovarian cancer tissue with SPIB monoclonal antibody.

- Immunocytochemistry

Immunocytochemical staining of HeLa cells with SPIB monoclonal antibody (green). DRAQ5 fluorescent DNA dye (blue). Actin filaments labeled with Alexa Fluor-555 phalloidin (red).

- Enzyme-linked Immunoabsorbent Assay

ELISA analysis of SPIB monoclonal antibody, clone 4G5.

- Flow Cytometry

Flow cytometric analysis of NIH/3T3 cells with SPIB monoclonal antibody (green) and negative control (red).

## Gene Info — SPIB

**Entrez GeneID** [6689](#)

**Gene Name** SPIB

**Gene Alias** SPI-B

**Gene Description** Spi-B transcription factor (Spi-1/PU.1 related)

**Omim ID** [606802](#)

**Gene Ontology** [Hyperlink](#)

**Gene Summary** SPI1 (MIM 165170) and SPIB are members of a subfamily of ETS (see ETS1; MIM 164720) transcription factors. ETS proteins share a conserved ETS domain that mediates specific DNA binding. SPIB and SPI1 bind to a purine-rich sequence, the PU box (5-prime-GAGGAA-3-prime).[supplied by OMIM]

**Other Designations** -