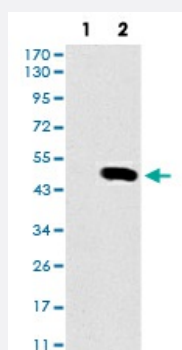


SPI1 monoclonal antibody, clone 5C7

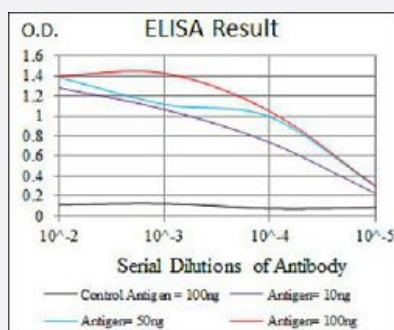
Catalog # MAB17735 Size 100 uL

Applications



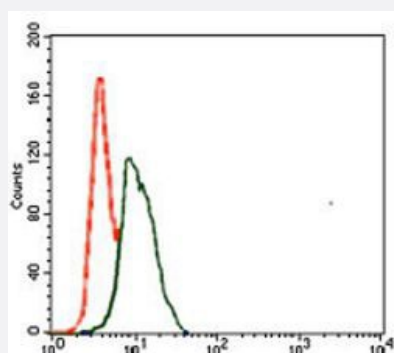
Western Blot (Transfected lysate)

Western blot analysis of (1) HEK293 cells, (2) SPI1-hlgGfC transfected HEK293 cell lysate with SPI1 monoclonal antibody.



Enzyme-linked Immunoabsorbent Assay

ELISA analysis of SPI1 monoclonal antibody, clone 5C7.



Flow Cytometry

Flow cytometric analysis of HeLa cells with SPI1 monoclonal antibody (green) and negative control (red).

Specification

Product Description

Mouse monoclonal antibody raised against recombinant human SPI1.

Immunogen	Recombinant protein corresponding to amino acids 124-271 of human SPI1 from <i>E. coli</i> .
Host	Mouse
Theoretical MW (kDa)	42
Reactivity	Human
Form	Liquid
Isotype	IgG1
Recommend Usage	ELISA (1:10000) Flow Cytometry (1:200-1:400) Immunocytochemistry Immunohistochemistry Western Blot (1:500-1:2000) The optimal working dilution should be determined by the end user.
Storage Buffer	In ascites (0.03% sodium azide).
Storage Instruction	Store at 4°C. For long term storage store at -20°C. Aliquot to avoid repeated freezing and thawing.
Note	This product contains sodium azide: a POISONOUS AND HAZARDOUS SUBSTANCE which should be handled by trained staff only.

Applications

- Western Blot (Transfected lysate)

Western blot analysis of (1) HEK293 cells, (2) SPI1-hlgGfc transfected HEK293 cell lysate with SPI1 monoclonal antibody.

- Enzyme-linked Immunoabsorbent Assay

ELISA analysis of SPI1 monoclonal antibody, clone 5C7.

- Flow Cytometry

Flow cytometric analysis of HeLa cells with SPI1 monoclonal antibody (green) and negative control (red).

Gene Info — SPI1

Entrez GeneID	6688
Gene Name	SPI1
Gene Alias	OF, PU.1, SFP11, SPI-1, SPIA

Gene Description	spleen focus forming virus (SFFV) proviral integration oncogene spi1
Omim ID	165170
Gene Ontology	Hyperlink
Gene Summary	<p>This gene encodes an ETS-domain transcription factor that activates gene expression during myeloid and B-lymphoid cell development. The nuclear protein binds to a purine-rich sequence known as the PU-box found near the promoters of target genes, and regulates their expression in coordination with other transcription factors and cofactors. The protein can also regulate alternative splicing of target genes. Multiple transcript variants encoding different isoforms have been found for this gene. [provided by RefSeq]</p>
Other Designations	31 kDa transforming protein SPI-1 proto-oncogene hematopoietic transcription factor PU.1

Pathway

- [Acute myeloid leukemia](#)
- [Pathways in cancer](#)

Disease

- [Leukemia](#)