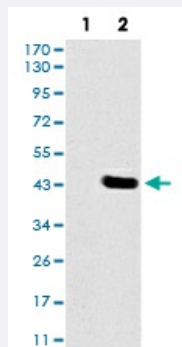


DLL4 monoclonal antibody, clone 4A11F8

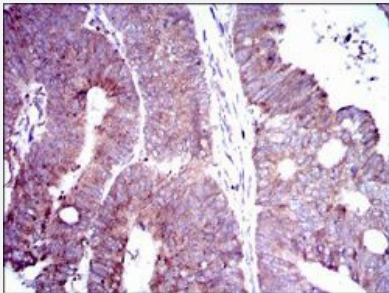
Catalog # MAB17733 Size 100 ug

Applications



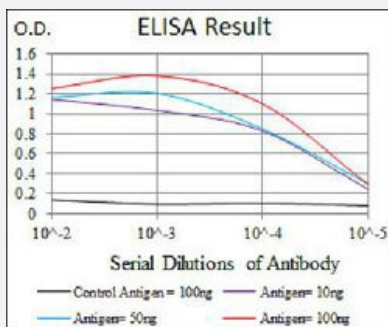
Western Blot (Transfected lysate)

Western blot analysis of (1) HEK293 cells, (2) DLL4-hlgGfC transfected HEK293 cell lysate with DLL4 monoclonal antibody.



Immunohistochemistry (Formalin/PFA-fixed paraffin-embedded sections)

Immunohistochemical staining of paraffin-embedded rectum cancer tissue with DLL4 monoclonal antibody.



Enzyme-linked Immunoabsorbent Assay

ELISA analysis of DLL4 monoclonal antibody, clone 4A11F8.

Specification

Product Description

Mouse monoclonal antibody raised against recombinant human DLL4.

Immunogen

Recombinant protein corresponding to amino acids 313-439 of human DLL4 from *E. coli*.

Host	Mouse
Theoretical MW (kDa)	74.6
Reactivity	Human
Form	Liquid
Isotype	IgG1
Recommend Usage	ELISA (1:10000) Flow Cytometry Immunocytochemistry Immunohistochemistry (1:200-1:1000) Western Blot (1:500-1:2000) The optimal working dilution should be determined by the end user.
Storage Buffer	In PBS (0.05% sodium azide).
Storage Instruction	Store at 4°C. For long term storage store at -20°C. Aliquot to avoid repeated freezing and thawing.
Note	This product contains sodium azide: a POISONOUS AND HAZARDOUS SUBSTANCE which should be handled by trained staff only.

Applications

- Western Blot (Transfected lysate)

Western blot analysis of (1) HEK293 cells, (2) DLL4-hlgGfc transfected HEK293 cell lysate with DLL4 monoclonal antibody.

- Immunohistochemistry (Formalin/PFA-fixed paraffin-embedded sections)

Immunohistochemical staining of paraffin-embedded rectum cancer tissue with DLL4 monoclonal antibody.

- Enzyme-linked Immunoabsorbent Assay

ELISA analysis of DLL4 monoclonal antibody, clone 4A11F8.

Gene Info — DLL4

Entrez GeneID	54567
Gene Name	DLL4
Gene Alias	MGC126344, hdelta2
Gene Description	delta-like 4 (Drosophila)

Omim ID [605185](#)

Gene Ontology [Hyperlink](#)

Gene Summary This gene is a homolog of the Drosophila delta gene. The delta gene family encodes Notch ligands that are characterized by a DSL domain, EGF repeats, and a transmembrane domain. [provided by RefSeq]

Other Designations delta 4|delta ligand 4|delta-like 4 homolog|delta-like 4 protein|notch ligand DLL4|notch ligand delta-2

Pathway

- [Notch signaling pathway](#)