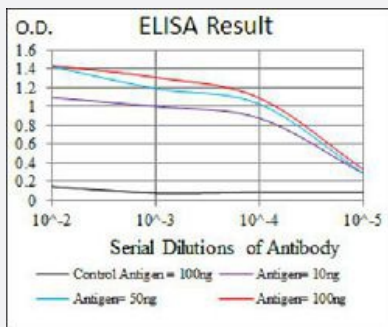


MYF6 monoclonal antibody, clone 5D7

Catalog # MAB17730 Size 100 ug

Applications



Enzyme-linked Immunoabsorbent Assay

ELISA analysis of MYF6 monoclonal antibody, clone 5D7.

Specification

Product Description	Mouse monoclonal antibody raised against recombinant human MYF6.
Immunogen	Recombinant protein corresponding to amino acids 85-150 of human MYF6 from <i>E. coli</i> .
Host	Mouse
Theoretical MW (kDa)	27
Reactivity	Human
Form	Liquid
Isotype	IgG1
Recommend Usage	ELISA (1:10000) Flow Cytometry Immunocytochemistry Immunohistochemistry Western Blot (1:500-1:2000) The optimal working dilution should be determined by the end user.
Storage Buffer	In PBS (0.05% sodium azide).

Storage Instruction

Store at 4°C. For long term storage store at -20°C.
Aliquot to avoid repeated freezing and thawing.

Note

This product contains sodium azide: a POISONOUS AND HAZARDOUS SUBSTANCE which should be handled by trained staff only.

Applications

- Enzyme-linked Immunoabsorbent Assay

ELISA analysis of MYF6 monoclonal antibody, clone 5D7.

Gene Info — MYF6

Entrez GeneID[4618](#)**Gene Name**

MYF6

Gene Alias

MRF4, bHLHc4

Gene Description

myogenic factor 6 (herculin)

Omim ID[159991](#) [160150](#) [310200](#)**Gene Ontology**[Hyperlink](#)**Other Designations**

herculin|myogenic factor 6|myogenic factor-6