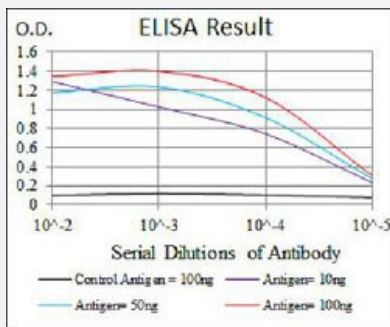


MAP1LC3B monoclonal antibody, clone 5H12

Catalog # MAB17722 Size 100 uL

Applications



Enzyme-linked Immunoabsorbent Assay

ELISA analysis of MAP1LC3B monoclonal antibody, clone 5H12.

Specification

Product Description Mouse monoclonal antibody raised against recombinant human MAP1LC3B.

Immunogen Recombinant protein corresponding to human MAP1LC3B from *E. coli*.

Host Mouse

Theoretical MW (kDa) 14.6

Reactivity Human

Form Liquid

Isotype IgG1

Recommend Usage

- ELISA (1:10000)
- Flow Cytometry (1:200-1:400)
- Immunocytochemistry
- Immunohistochemistry
- Western Blot (1:500-1:2000)
- The optimal working dilution should be determined by the end user.

Storage Buffer In ascites (0.03% sodium azide).

Storage Instruction

Store at 4°C. For long term storage store at -20°C.
Aliquot to avoid repeated freezing and thawing.

Note

This product contains sodium azide: a POISONOUS AND HAZARDOUS SUBSTANCE which should be handled by trained staff only.

Applications

- Enzyme-linked Immunoabsorbent Assay

ELISA analysis of MAP1LC3B monoclonal antibody, clone 5H12.

Gene Info — MAP1LC3B

Entrez GeneID[81631](#)**Gene Name**

MAP1LC3B

Gene Alias

LC3B, MAP1A/1BLC3

Gene Description

microtubule-associated protein 1 light chain 3 beta

Gene Ontology[Hyperlink](#)**Gene Summary**

The product of this gene is a subunit of neuronal microtubule-associated MAP1A and MAP1B proteins, which are involved in microtubule assembly and important for neurogenesis. Studies on the rat homolog implicate a role for this gene in autophagy, a process that involves the bulk degradation of cytoplasmic component. [provided by RefSeq]

Other Designations

microtubule-associated proteins 1A/1B light chain 3