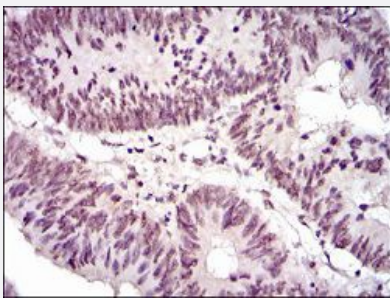


NCK1 monoclonal antibody, clone 5B7

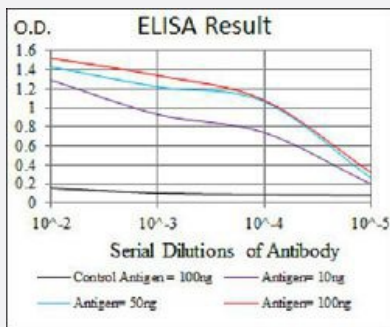
Catalog # MAB17721 Size 100 ug

Applications



Immunohistochemistry (Formalin/PFA-fixed paraffin-embedded sections)

Immunohistochemical staining of paraffin-embedded rectum cancer tissue with NCK1 monoclonal antibody.



Enzyme-linked Immunoabsorbent Assay

ELISA analysis of NCK1 monoclonal antibody, clone 5B7.

Specification

Product Description	Mouse monoclonal antibody raised against recombinant human NCK1.
Immunogen	Recombinant protein corresponding to human NCK1 from <i>E. coli</i> .
Host	Mouse
Theoretical MW (kDa)	47
Reactivity	Human
Form	Liquid
Isotype	IgG1

Recommend Usage	ELISA (1:10000) Flow Cytometry (1:200-1:400) Immunocytochemistry Immunohistochemistry (1:200-1:1000) Western Blot (1:500-1:2000) The optimal working dilution should be determined by the end user.
Storage Buffer	In PBS (0.05% sodium azide).
Storage Instruction	Store at 4°C. For long term storage store at -20°C. Aliquot to avoid repeated freezing and thawing.
Note	This product contains sodium azide: a POISONOUS AND HAZARDOUS SUBSTANCE which should be handled by trained staff only.

Applications

- Immunohistochemistry (Formalin/PFA-fixed paraffin-embedded sections)
 Immunohistochemical staining of paraffin-embedded rectum cancer tissue with NCK1 monoclonal antibody.
- Enzyme-linked Immunoabsorbent Assay
 ELISA analysis of NCK1 monoclonal antibody, clone 5B7.

Gene Info — NCK1

Entrez GeneID	4690
Gene Name	NCK1
Gene Alias	MGC12668, NCK, NCKalpha
Gene Description	NCK adaptor protein 1
Omim ID	600508
Gene Ontology	Hyperlink
Gene Summary	The protein encoded by this gene is one of the signaling and transforming proteins containing Src homology 2 and 3 (SH2 and SH3) domains. It is located in the cytoplasm and is an adaptor protein involved in transducing signals from receptor tyrosine kinases to downstream signal recipients such as RAS. [provided by RefSeq]
Other Designations	NCK tyrosine kinase SH2/SH3 adaptor protein NCK-alpha melanoma NCK protein non-catalytic region of tyrosine kinase

Pathway

- [Axon guidance](#)
- [ErbB signaling pathway](#)
- [Pathogenic Escherichia coli infection - EHEC](#)
- [T cell receptor signaling pathway](#)