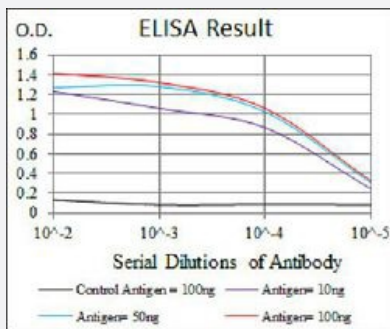


HSP90AA1 monoclonal antibody, clone 5G5

Catalog # MAB17719 Size 100 ug

Applications



Enzyme-linked Immunoabsorbent Assay

ELISA analysis of HSP90AA1 monoclonal antibody, clone 5G5.

Specification

Product Description Mouse monoclonal antibody raised against recombinant human HSP90AA1.

Immunogen Recombinant protein corresponding to human HSP90AA1 from *E. coli*.

Host Mouse

Theoretical MW (kDa) 90

Reactivity Human

Form Liquid

Isotype IgG1

Recommend Usage

- ELISA (1:10000)
- Flow Cytometry (1:200-1:400)
- Immunocytochemistry
- Immunohistochemistry (1:200-1:1000)
- Western Blot (1:500-1:2000)
- The optimal working dilution should be determined by the end user.

Storage Buffer In PBS (0.05% sodium azide).

Storage Instruction

Store at 4°C. For long term storage store at -20°C.
Aliquot to avoid repeated freezing and thawing.

Note

This product contains sodium azide: a POISONOUS AND HAZARDOUS SUBSTANCE which should be handled by trained staff only.

Applications

- Enzyme-linked Immunoabsorbent Assay

ELISA analysis of HSP90AA1 monoclonal antibody, clone 5G5.

Gene Info — HSP90AA1

Entrez GeneID[3320](#)**Gene Name**

HSP90AA1

Gene Alias

FLJ31884, HSP86, HSP89A, HSP90A, HSP90N, HSPC1, HSPCA, HSPCAL1, HSPCAL4, HSPN, Hsp89, Hsp90, LAP2

Gene Description

heat shock protein 90kDa alpha (cytosolic), class A member 1

Omim ID[140571](#)**Gene Ontology**[Hyperlink](#)**Gene Summary**

HSP90 proteins are highly conserved molecular chaperones that have key roles in signal transduction, protein folding, protein degradation, and morphologic evolution. HSP90 proteins normally associate with other cochaperones and play important roles in folding newly synthesized proteins or stabilizing and refolding denatured proteins after stress. There are 2 major cytosolic HSP90 proteins, HSP90AA1, an inducible form, and HSP90AB1 (MIM 140572), a constitutive form. Other HSP90 proteins are found in endoplasmic reticulum (HSP90B1; MIM 191175) and mitochondria (TRAP1; MIM 606219) (Chen et al., 2005 [PubMed 16269234]).[supplied by OMIM]

Other Designations

heat shock 90kD protein 1, alpha|heat shock 90kD protein 1, alpha-like 4|heat shock 90kD protein, alpha-like 4|heat shock 90kDa protein 1, alpha

Pathway

- [Antigen processing and presentation](#)
- [Pathways in cancer](#)
- [Prostate cancer](#)

Disease

- [Asthma](#)
- [Cardiovascular Diseases](#)
- [Cleft Lip](#)
- [Cleft Palate](#)
- [Diabetes Mellitus](#)
- [Edema](#)