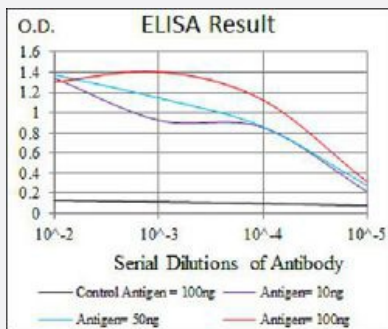


RAP1A monoclonal antibody, clone 5F8

Catalog # MAB17717 Size 100 ug

Applications



Enzyme-linked Immunoabsorbent Assay

ELISA analysis of RAP1A monoclonal antibody, clone 5F8.

Specification

Product Description Mouse monoclonal antibody raised against recombinant human RAP1A.

Immunogen Recombinant protein corresponding to human RAP1A from *E. coli*.

Host Mouse

Theoretical MW (kDa) 21

Reactivity Human

Form Liquid

Isotype IgG1

Recommend Usage

- ELISA (1:10000)
- Flow Cytometry (1:200-1:400)
- Immunocytochemistry
- Immunohistochemistry
- Western Blot (1:500-1:2000)
- The optimal working dilution should be determined by the end user.

Storage Buffer In PBS (0.05% sodium azide).

Storage Instruction

Store at 4°C. For long term storage store at -20°C.
Aliquot to avoid repeated freezing and thawing.

Note

This product contains sodium azide: a POISONOUS AND HAZARDOUS SUBSTANCE which should be handled by trained staff only.

Applications

- Enzyme-linked Immunoabsorbent Assay
ELISA analysis of RAP1A monoclonal antibody, clone 5F8.

Gene Info — RAP1A

Entrez GeneID[5906](#)**Gene Name**

RAP1A

Gene Alias

KREV-1, KREV1, RAP1, SMGP21

Gene Description

RAP1A, member of RAS oncogene family

Omim ID[179520](#)**Gene Ontology**[Hyperlink](#)**Gene Summary**

The product of this gene belongs to the family of RAS-related proteins. These proteins share approximately 50% amino acid identity with the classical RAS proteins and have numerous structural features in common. The most striking difference between RAP proteins and RAS proteins resides in their 61st amino acid: glutamine in RAS is replaced by threonine in RAP proteins. The product of this gene counteracts the mitogenic function of RAS because it can interact with RAS GAPs and RAF in a competitive manner. Two transcript variants encoding the same protein have been identified for this gene. [provided by RefSeq]

Other Designations

OTTHUMP00000013740|OTTHUMP00000013741|OTTHUMP00000059089|RAS-related protein RAP1A|Ras-related protein Krev-1|Ras-related protein Rap-1A

Pathway

- [Chemokine signaling pathway](#)
- [Focal adhesion](#)
- [Leukocyte transendothelial migration](#)

- [Long-term potentiation](#)
- [MAPK signaling pathway](#)
- [Neurotrophin signaling pathway](#)
- [Renal cell carcinoma](#)

Disease

- [Carcinoma](#)
- [Genetic Predisposition to Disease](#)
- [Osteoporosis](#)
- [Thyroid Neoplasms](#)