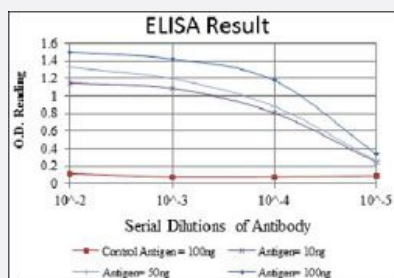


KLRD1 monoclonal antibody, clone 3G2

Catalog # MAB17704 Size 100 uL

Applications



Enzyme-linked Immunoabsorbent Assay

ELISA analysis of KLRD1 monoclonal antibody, clone 3G2.

Specification

Product Description Mouse monoclonal antibody raised against recombinant human KLRD1.

Immunogen Recombinant protein corresponding to human KLRD1 from *E. coli*.

Host Mouse

Theoretical MW (kDa) 21

Reactivity Human

Form Liquid

Isotype IgG1

Recommend Usage ELISA (1:10000)
Flow Cytometry
Immunocytochemistry
Immunohistochemistry
Western Blot (1:500-1:2000)
The optimal working dilution should be determined by the end user.

Storage Buffer In ascites (0.03% sodium azide).

Storage Instruction

Store at 4°C. For long term storage store at -20°C.
Aliquot to avoid repeated freezing and thawing.

Note

This product contains sodium azide: a POISONOUS AND HAZARDOUS SUBSTANCE which should be handled by trained staff only.

Applications

- Enzyme-linked Immunoabsorbent Assay
ELISA analysis of KLRD1 monoclonal antibody, clone 3G2.

Gene Info — KLRD1

Entrez GeneID[3824](#)**Gene Name**

KLRD1

Gene Alias

CD94

Gene Description

killer cell lectin-like receptor subfamily D, member 1

Omim ID[602894](#)**Gene Ontology**[Hyperlink](#)**Gene Summary**

Natural killer (NK) cells are a distinct lineage of lymphocytes that mediate cytotoxic activity and secrete cytokines upon immune stimulation. Several genes of the C-type lectin superfamily, including members of the NKG2 family, are expressed by NK cells and may be involved in the regulation of NK cell function. KLRD1 (CD94) is an antigen preferentially expressed on NK cells and is classified as a type II membrane protein because it has an external C terminus. Three transcript variants encoding two different isoforms have been found for this gene. [provided by RefSeq]

Other Designations

CD94 antigen

Pathway

- [Antigen processing and presentation](#)
- [Graft-versus-host disease](#)
- [Natural killer cell mediated cytotoxicity](#)

Disease

- [Arthritis](#)
- [Genetic Predisposition to Disease](#)
- [Hepatitis B](#)
- [Lupus Erythematosus](#)