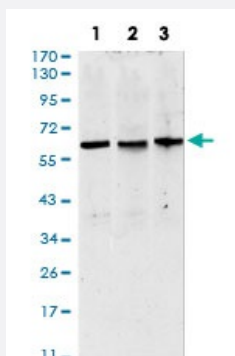


TUBA1A monoclonal antibody, clone 2D4

Catalog # MAB17702 Size 100 uL

Applications



Western Blot (Cell lysate)

Western blot analysis of (1) HeLa cell, (2) HEK293 cell, (3) Raji cell with TUBA1A monoclonal antibody.

Specification

Product Description Mouse monoclonal antibody raised against recombinant human TUBA1A.

Immunogen Recombinant protein corresponding to human TUBA1A from *E. coli*.

Host Mouse

Theoretical MW (kDa) 60

Reactivity Human

Form Liquid

Isotype IgG1

Recommend Usage

- ELISA (1:10000)
- Flow Cytometry
- Immunocytochemistry
- Immunohistochemistry
- Western Blot (1:500-1:2000)
- The optimal working dilution should be determined by the end user.

Storage Buffer In ascites (0.03% sodium azide).

Storage Instruction

Store at 4°C. For long term storage store at -20°C.
Aliquot to avoid repeated freezing and thawing.

Note

This product contains sodium azide: a POISONOUS AND HAZARDOUS SUBSTANCE which should be handled by trained staff only.

Applications

- Western Blot (Cell lysate)

Western blot analysis of (1) HeLa cell, (2) HEK293 cell, (3) Raji cell with TUBA1A monoclonal antibody.

Gene Info — TUBA1A

Entrez GeneID[7846](#)**Gene Name**

TUBA1A

Gene Alias

B-ALPHA-1, FLJ25113, LIS3, TUBA3

Gene Description

tubulin, alpha 1a

Omim ID[602529 611603](#)**Gene Ontology**[Hyperlink](#)**Gene Summary**

Microtubules of the eukaryotic cytoskeleton perform essential and diverse functions and are composed of a heterodimer of alpha and beta tubulins. The genes encoding these microtubule constituents belong to the tubulin superfamily, which is composed of six distinct families. Genes from the alpha, beta and gamma tubulin families are found in all eukaryotes. The alpha and beta tubulins represent the major components of microtubules, while gamma tubulin plays a critical role in the nucleation of microtubule assembly. There are multiple alpha and beta tubulin genes, which are highly conserved among species. This gene encodes alpha tubulin and is highly similar to mouse and rat Tuba1 gene. Northern blotting studies have shown that the gene expression is predominantly found in morphologically differentiated neurologic cells. This gene is one of three alpha-tubulin genes in a cluster on chromosome 12q. [provided by RefSeq]

Other Designations

hum-a-tub1|hum-a-tub2|tubulin, alpha 3|tubulin, alpha, brain-specific

Pathway

- [Gap junction](#)
- [Pathogenic Escherichia coli infection - EHEC](#)

Disease

- [Lissencephaly](#)
- [Mental Disorders](#)
- [Neuropsychological Tests](#)
- [Schizophrenia](#)