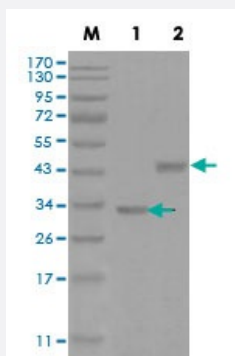


# SKP2 monoclonal antibody, clone 6G9D10

Catalog # MAB17693      Size 100 uL

## Applications



### Western Blot (Recombinant protein)

Western blot analysis of truncated (1) Trx-SKP2 recombinant protein and (2) GST-SKP2 recombinant protein with SKP2 monoclonal antibody.

## Specification

<b>Product Description</b>	Mouse monoclonal antibody raised against recombinant human SKP2.
<b>Immunogen</b>	Recombinant protein corresponding to amino acids 1-130 of human SKP2 from <i>E. coli</i> .
<b>Host</b>	Mouse
<b>Reactivity</b>	Human
<b>Form</b>	Liquid
<b>Isotype</b>	IgG1
<b>Recommend Usage</b>	ELISA (1:10000) Flow Cytometry Immunocytochemistry Immunohistochemistry Western Blot (1:500-1:2000) The optimal working dilution should be determined by the end user.
<b>Storage Buffer</b>	In ascites (0.03% sodium azide).

**Storage Instruction**

Store at 4°C. For long term storage store at -20°C.  
Aliquot to avoid repeated freezing and thawing.

**Note**

This product contains sodium azide: a POISONOUS AND HAZARDOUS SUBSTANCE which should be handled by trained staff only.

## Applications

- Western Blot (Recombinant protein)

Western blot analysis of truncated (1) Trx-SKP2 recombinant protein and (2) GST-SKP2 recombinant protein with SKP2 monoclonal antibody.

## Gene Info — SKP2

**Entrez GeneID**[6502](#)**Gene Name**

SKP2

**Gene Alias**

FBL1, FBXL1, FLB1, MGC1366

**Gene Description**

S-phase kinase-associated protein 2 (p45)

**Omim ID**[601436](#)**Gene Ontology**[Hyperlink](#)**Gene Summary**

This gene encodes a member of the F-box protein family which is characterized by an approximately 40 amino acid motif, the F-box. The F-box proteins constitute one of the four subunits of ubiquitin protein ligase complex called SCFs (SKP1-cullin-F-box), which function in phosphorylation-dependent ubiquitination. The F-box proteins are divided into 3 classes: Fbws containing WD-40 domains, Fbls containing leucine-rich repeats, and Fbxs containing either different protein-protein interaction modules or no recognizable motifs. The protein encoded by this gene belongs to the Fbls class; in addition to an F-box, this protein contains 10 tandem leucine-rich repeats. This protein is an essential element of the cyclin A-CDK2 S-phase kinase. It specifically recognizes phosphorylated cyclin-dependent kinase inhibitor 1B (CDKN1B, also referred to as p27 or KIP1) predominantly in S phase and interacts with S-phase kinase-associated protein 1 (SKP1 or p19). In addition, this gene is established as a protooncogene causally involved in the pathogenesis of lymphomas. Alternative splicing of this gene generates 2 transcript variants encoding different isoforms. [provided by RefSeq]

**Other Designations**

CDK2/cyclin A-associated protein p45|S-phase kinase-associated protein 2

## Pathway

- [Cell cycle](#)
- [Pathways in cancer](#)
- [Small cell lung cancer](#)
- [Ubiquitin mediated proteolysis](#)

## Disease

- [Breast cancer](#)
- [Breast Neoplasms](#)
- [Cardiovascular Diseases](#)
- [Diabetes Mellitus](#)
- [Disease Progression](#)
- [Edema](#)
- [Genetic Predisposition to Disease](#)
- [Ovarian Neoplasms](#)