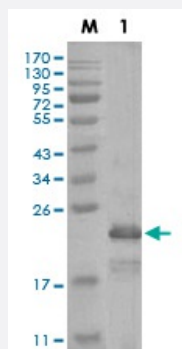


HAND1 monoclonal antibody, clone 8E7A11

Catalog # MAB17690 Size 100 uL

Applications



Western Blot (Recombinant protein)

Western blot analysis of truncated Trx-HAND1 recombinant protein.

Specification

| | |
|----------------------------|---|
| Product Description | Mouse monoclonal antibody raised against recombinant human HAND1. |
| Immunogen | Recombinant protein corresponding to amino acids 90-190 of human HAND1 from <i>E. coli</i> . |
| Host | Mouse |
| Reactivity | Human |
| Form | Liquid |
| Isotype | IgG1 |
| Recommend Usage | ELISA (1:10000) Flow Cytometry Immunocytochemistry Immunohistochemistry Western Blot (1:500-1:2000) The optimal working dilution should be determined by the end user. |
| Storage Buffer | In ascites (0.03% sodium azide). |

Storage Instruction

Store at 4°C. For long term storage store at -20°C.
Aliquot to avoid repeated freezing and thawing.

Note

This product contains sodium azide: a POISONOUS AND HAZARDOUS SUBSTANCE which should be handled by trained staff only.

Applications

- Western Blot (Recombinant protein)

Western blot analysis of truncated Trx-HAND1 recombinant protein.

Gene Info — HAND1

Entrez GeneID[9421](#)**Gene Name**

HAND1

Gene Alias

Hxt, Thing1, bHLHa27, eHand

Gene Description

heart and neural crest derivatives expressed 1

Omim ID[602406](#)**Gene Ontology**[Hyperlink](#)**Gene Summary**

The protein encoded by this gene belongs to the basic helix-loop-helix family of transcription factors. This gene product is one of two closely related family members, the HAND proteins, which are asymmetrically expressed in the developing ventricular chambers and play an essential role in cardiac morphogenesis. Working in a complementary fashion, they function in the formation of the right ventricle and aortic arch arteries, implicating them as mediators of congenital heart disease. In addition, it has been suggested that this transcription factor may be required for early trophoblast differentiation. [provided by RefSeq]

Other Designations

basic helix-loop-helix transcription factor HAND1

Disease

- [Heart Septal Defects](#)