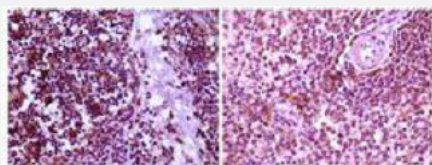


MAP2K4 monoclonal antibody, clone 2D10D8

Catalog # MAB17678 Size 100 uL

Applications

Immunohistochemistry (Formalin/PFA-fixed paraffin-embedded sections)



Immunohistochemical staining of paraffin-embedded human thymoma tissue (left) and spleen tissue (right) with MAP2K4 monoclonal antibody.

Specification

Product Description Mouse monoclonal antibody raised against recombinant human MAP2K4.

Immunogen Recombinant protein corresponding to human MAP2K4 from *E. coli*.

Host Mouse

Reactivity Human

Form Liquid

Isotype IgM

Recommend Usage

- ELISA (1:10000)
- Flow Cytometry
- Immunocytochemistry
- Immunohistochemistry (1:200-1:1000)
- Western Blot
- The optimal working dilution should be determined by the end user.

Storage Buffer In ascites (0.03% sodium azide).

Storage Instruction

- Store at 4°C. For long term storage store at -20°C.
- Aliquot to avoid repeated freezing and thawing.

Note

This product contains sodium azide: a POISONOUS AND HAZARDOUS SUBSTANCE which should be handled by trained staff only.

Applications

- Immunohistochemistry (Formalin/PFA-fixed paraffin-embedded sections)

Immunohistochemical staining of paraffin-embedded human thymoma tissue (left) and spleen tissue (right) with MAP2K4 monoclonal antibody.

Gene Info — MAP2K4

Entrez GeneID [6416](#)

Gene Name MAP2K4

Gene Alias JNKK, JNKK1, MAPKK4, MEK4, MKK4, PRKMK4, SEK1, SERK1

Gene Description mitogen-activated protein kinase kinase 4

Omim ID [601335](#)

Gene Ontology [Hyperlink](#)

Gene Summary This gene encodes a dual specificity protein kinase that belongs to the Ser/Thr protein kinase family. This kinase is a direct activator of MAP kinases in response to various environmental stresses or mitogenic stimuli. It has been shown to activate MAPK8/JNK1, MAPK9/JNK2, and MAPK14/p38, but not MAPK1/ERK2 or MAPK3/ERK3. This kinase is phosphorylated, and thus activated by MAP3K1/MEKK. The knockout studies in mice suggested the roles of this kinase in mediating survival signal in T cell development, as well as in the organogenesis of liver. [provided by RefSeq]

Other Designations JNK activating kinase 1|JNK-activated kinase 1|MAP kinase kinase 4|MAPK/ERK kinase 4|SAPK/ERK kinase 1|c-Jun N-terminal kinase kinase 1|dual specificity mitogen-activated protein kinase kinase 4

Pathway

- [Epithelial cell signaling in Helicobacter pylori infection](#)
- [ErbB signaling pathway](#)
- [Fc epsilon RI signaling pathway](#)
- [GnRH signaling pathway](#)

- [MAPK signaling pathway](#)
- [Toll-like receptor signaling pathway](#)

Disease

- [Colorectal Neoplasms](#)
- [Genetic Predisposition to Disease](#)
- [Lung Neoplasms](#)
- [Pancreatic cancer](#)
- [Pancreatic Neoplasms](#)