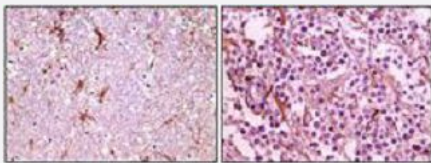


CIB1 monoclonal antibody, clone 5A1F5E12

Catalog # MAB17677 Size 100 uL

Applications

Immunohistochemistry (Formalin/PFA-fixed paraffin-embedded sections)



Immunohistochemical staining of paraffin-embedded human thalamus (left) and glioma tissue (right) with CIB1 monoclonal antibody.

Specification

Product Description Mouse monoclonal antibody raised against recombinant human CIB1.

Immunogen Recombinant protein corresponding to human CIB1 from *E. coli*.

Host Mouse

Reactivity Human

Form Liquid

Recommend Usage
 ELISA (1:10000)
 Flow Cytometry
 Immunocytochemistry
 Immunohistochemistry (1:200-1:1000)
 Western Blot (1:500-1:2000)
 The optimal working dilution should be determined by the end user.

Storage Buffer In ascites (0.03% sodium azide).

Storage Instruction
 Store at 4°C. For long term storage store at -20°C.
 Aliquot to avoid repeated freezing and thawing.

Note

This product contains sodium azide: a POISONOUS AND HAZARDOUS SUBSTANCE which should be handled by trained staff only.

Applications

- Immunohistochemistry (Formalin/PFA-fixed paraffin-embedded sections)

Immunohistochemical staining of paraffin-embedded human thalamus (left) and glioma tissue (right) with CIB1 monoclonal antibody.

Gene Info — CIB1

Entrez GeneID [10519](#)

Gene Name CIB1

Gene Alias CIB, KIP, KIP1, SIP2-28

Gene Description calcium and integrin binding 1 (calmyrin)

Omim ID [602293](#)

Gene Ontology [Hyperlink](#)

Gene Summary The protein encoded by this gene is a member of the calcium-binding protein family. The specific function of this protein has not yet been determined; however this protein is known to interact with DNA-dependent protein kinase and may play a role in kinase-phosphatase regulation of DNA end joining. This protein also interacts with integrin alpha(IIb)beta(3), which may implicate this protein as a regulatory molecule for alpha(IIb)beta(3). [provided by RefSeq]

Other Designations DNA-dependent protein kinase interacting protein|Snk interacting protein 2-28|calcium and integrin binding 1|calcium and integrin binding protein|calcium and integrin binding, protein kinase interacting protein|calmyrin

Disease

- [Cardiovascular Diseases](#)
- [Diabetes Mellitus](#)
- [Edema](#)