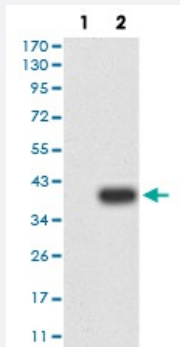


CD3D monoclonal antibody, clone 1F6A8

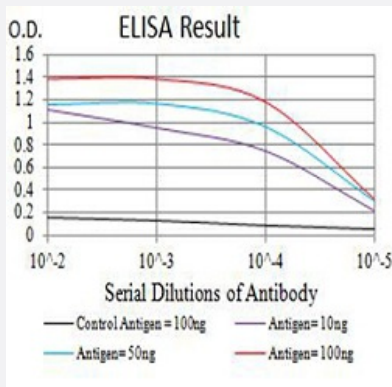
Catalog # MAB17643 Size 100 ug

Applications



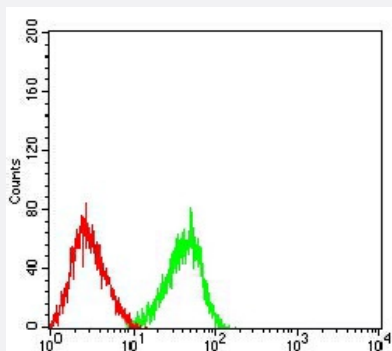
Western Blot (Transfected lysate)

Western blot analysis of (1) HEK293 cells, (2) CD3D-hlgGfC transfected HEK293 cell lysate.



Enzyme-linked Immunoabsorbent Assay

ELISA analysis of CD3D monoclonal antibody, clone 1F6A8.



Flow Cytometry

Flow cytometric analysis of HL-60 cells with CD3D monoclonal antibody (green) and negative control (red).

Specification

Product Description	Mouse monoclonal antibody raised against recombinant human CD3D.
Immunogen	Recombinant protein corresponding to amino acid 22-105 of human CD3D from <i>E. coli</i> .
Host	Mouse
Theoretical MW (kDa)	18.9
Reactivity	Human
Form	Liquid
Isotype	IgG1
Recommend Usage	ELISA (1:10000) Western Blot (1:500-1:2000) Immunocytochemistry Flow Cytometry (1:200-1:400) Immunohistochemistry The optimal working dilution should be determined by the end user.
Storage Buffer	In PBS (0.05% sodium azide).
Storage Instruction	Store at 4°C. For long term storage store at -20°C. Aliquot to avoid repeated freezing and thawing.
Note	This product contains sodium azide: a POISONOUS AND HAZARDOUS SUBSTANCE which should be handled by trained staff only.

Applications

- Western Blot (Transfected lysate)

Western blot analysis of (1) HEK293 cells, (2) CD3D-hlgGfC transfected HEK293 cell lysate.

- Enzyme-linked Immunoabsorbent Assay

ELISA analysis of CD3D monoclonal antibody, clone 1F6A8.

- Flow Cytometry

Flow cytometric analysis of HL-60 cells with CD3D monoclonal antibody (green) and negative control (red).

Gene Info — CD3D

Entrez GeneID [915](#)

Gene Name CD3D

Gene Alias	CD3-DELTA, T3D
Gene Description	CD3d molecule, delta (CD3-TCR complex)
Omim ID	186790 600802
Gene Ontology	Hyperlink
Gene Summary	<p>The protein encoded by this gene is part of the T-cell receptor/CD3 complex (TCR/CD3 complex) and is involved in T-cell development and signal transduction. The encoded membrane protein represents the delta subunit of the CD3 complex, and along with four other CD3 subunits, binds either TCR alpha/beta or TCR gamma/delta to form the TCR/CD3 complex on the surface of T-cells. Defects in this gene are a cause of severe combined immunodeficiency autosomal recessive T-cell-negative/B-cell-positive/NK-cell-positive (SCIDBNK). Two transcript variants encoding different isoforms have been found for this gene. Other variants may also exist, but the full-length natures of their transcripts has yet to be defined. [provided by RefSeq]</p>
Other Designations	CD3D antigen, delta polypeptide CD3d antigen, delta polypeptide (TiT3 complex) T-cell receptor T3 delta chain T-cell surface glycoprotein CD3 delta chain

Pathway

- [Hematopoietic cell lineage](#)
- [Primary immunodeficiency](#)
- [T cell receptor signaling pathway](#)

Disease

- [Celiac Disease](#)
- [Genetic Predisposition to Disease](#)