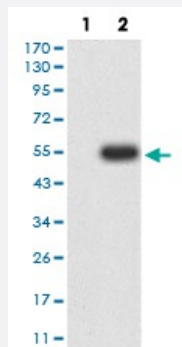


BTN3A1 monoclonal antibody, clone 4E1B9

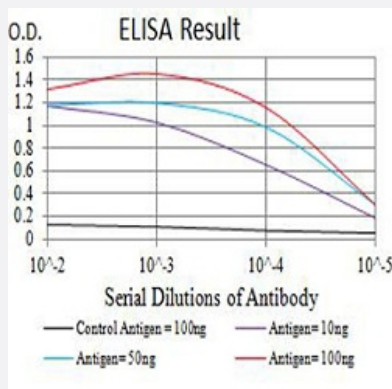
Catalog # MAB17640 Size 100 ug

Applications



Western Blot (Transfected lysate)

Western blot analysis of (1) HEK293 cells, (2) BTN3A1-hlgGfc transfected HEK293 cell lysate.



Enzyme-linked Immunoabsorbent Assay

ELISA analysis of BTN3A1 monoclonal antibody, clone 4E1B9.

Specification

Product Description	Mouse monoclonal antibody raised against recombinant human BTN3A1.
Immunogen	Recombinant protein corresponding to amino acid 30-254 of human BTN3A1 from <i>E. coli</i> .
Host	Mouse
Theoretical MW (kDa)	57.7
Reactivity	Human
Form	Liquid

Isotype	IgG1
Recommend Usage	ELISA (1:10000) Western Blot (1:500-1:2000) Immunocytochemistry Flow Cytometry Immunohistochemistry The optimal working dilution should be determined by the end user.
Storage Buffer	In PBS (0.05% sodium azide).
Storage Instruction	Store at 4°C. For long term storage store at -20°C. Aliquot to avoid repeated freezing and thawing.
Note	This product contains sodium azide: a POISONOUS AND HAZARDOUS SUBSTANCE which should be handled by trained staff only.

Applications

- Western Blot (Transfected lysate)

Western blot analysis of (1) HEK293 cells, (2) BTN3A1-hlgGfc transfected HEK293 cell lysate.

- Enzyme-linked Immunoabsorbent Assay

ELISA analysis of BTN3A1 monoclonal antibody, clone 4E1B9.

Gene Info — BTN3A1

Entrez GeneID	11119
Gene Name	BTN3A1
Gene Alias	BT3.1, BTF5, CD277, MGC141880
Gene Description	butyrophilin, subfamily 3, member A1
Gene Ontology	Hyperlink
Gene Summary	subfamily 3
Other Designations	OTTHUMP00000039404 dJ45P21.3 (butyrophilin, subfamily 3, member A1)

Disease

- [Genetic Predisposition to Disease](#)
- [Schizophrenia](#)