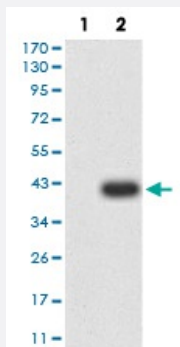


CD3G monoclonal antibody, clone 5B7F9

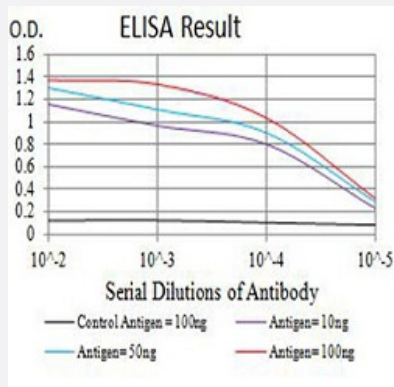
Catalog # MAB17633 Size 100 ug

Applications



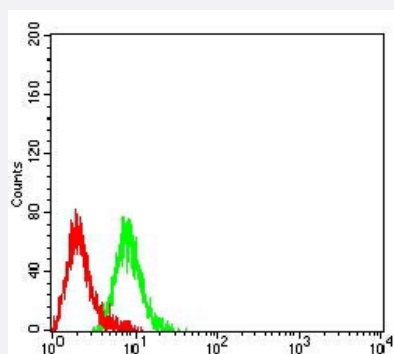
Western Blot (Transfected lysate)

Western blot analysis of (1) HEK293 cells, (2) CD3G-hlgGfc transfected HEK293 cell lysate.



Enzyme-linked Immunoabsorbent Assay

ELISA analysis of CD3G monoclonal antibody, clone 5B7F9.



Flow Cytometry

Flow cytometric analysis of Raji cells with CD3G monoclonal antibody (green) and negative control (red).

Specification

Product Description	Mouse monoclonal antibody raised against recombinant human CD3G.
Immunogen	Recombinant protein corresponding to amino acid 23-116 of human CD3G from <i>E. coli</i> .
Host	Mouse
Theoretical MW (kDa)	20.5
Reactivity	Human
Form	Liquid
Isotype	IgG1
Recommend Usage	ELISA (1:10000) Western Blot (1:500-1:2000) Immunocytochemistry Flow Cytometry (1:200-1:400) Immunohistochemistry The optimal working dilution should be determined by the end user.
Storage Buffer	In PBS (0.05% sodium azide).
Storage Instruction	Store at 4°C. For long term storage store at -20°C. Aliquot to avoid repeated freezing and thawing.
Note	This product contains sodium azide: a POISONOUS AND HAZARDOUS SUBSTANCE which should be handled by trained staff only.

Applications

- Western Blot (Transfected lysate)

Western blot analysis of (1) HEK293 cells, (2) CD3G-hlgGfc transfected HEK293 cell lysate.

- Enzyme-linked Immunoabsorbent Assay

ELISA analysis of CD3G monoclonal antibody, clone 5B7F9.

- Flow Cytometry

Flow cytometric analysis of Raji cells with CD3G monoclonal antibody (green) and negative control (red).

Gene Info — CD3G

Entrez GeneID [917](#)

Gene Name CD3G

Gene Alias	CD3-GAMMA, FLJ17620, FLJ17664, FLJ79544, FLJ94613, MGC138597, T3G
Gene Description	CD3g molecule, gamma (CD3-TCR complex)
Omim ID	186740
Gene Ontology	Hyperlink
Gene Summary	<p>The protein encoded by this gene is the CD3-gamma polypeptide, which together with CD3-epsilon, -delta and -zeta, and the T-cell receptor alpha/beta and gamma/delta heterodimers, forms the T-cell receptor-CD3 complex. This complex plays an important role in coupling antigen recognition to several intracellular signal-transduction pathways. The genes encoding the epsilon, gamma and delta polypeptides are located in the same cluster on chromosome 11. Defects in this gene are associated with T cell immunodeficiency. [provided by RefSeq]</p>
Other Designations	CD3G antigen, gamma polypeptide CD3g antigen, gamma polypeptide (TiT3 complex) T-cell antigen receptor complex, gamma subunit of T3 T-cell receptor T3 gamma chain T-cell surface glycoprotein CD3 gamma chain

Pathway

- [Hematopoietic cell lineage](#)
- [T cell receptor signaling pathway](#)

Disease

- [Arthritis](#)
- [Celiac Disease](#)
- [Genetic Predisposition to Disease](#)