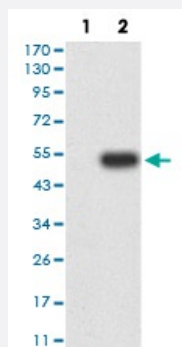


BTN2A2 monoclonal antibody, clone 6C7D2

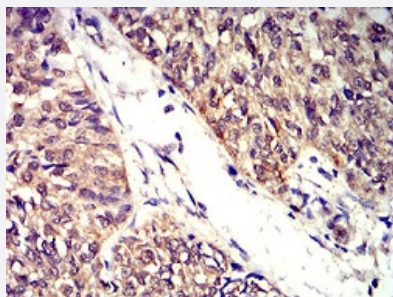
Catalog # MAB17631 Size 100 ug

Applications



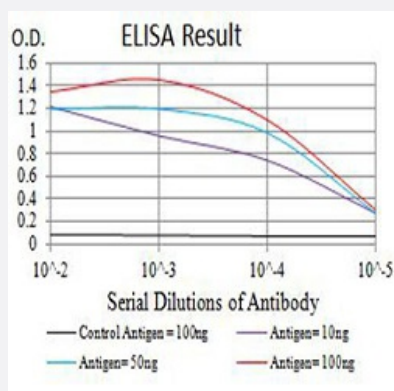
Western Blot (Transfected lysate)

Western blot analysis of (1) HEK293 cells, (2) BTN2A2-hlgGfc transfected HEK293 cell lysate.



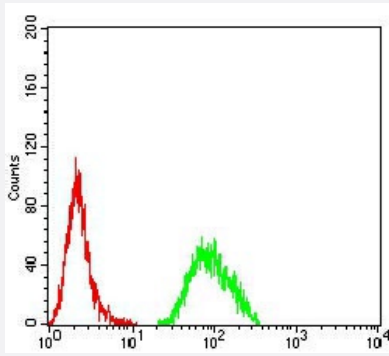
Immunohistochemistry (Formalin/PFA-fixed paraffin-embedded sections)

Immunohistochemical staining of paraffin-embedded bladder cancer tissues with BTN2A2 monoclonal antibody.



Enzyme-linked Immunoabsorbent Assay

ELISA analysis of BTN2A2 monoclonal antibody, clone 6C7D2.



Flow Cytometry

Flow cytometric analysis of Hela cells with BTN2A2 monoclonal antibody (green) and negative control (red).

Specification

Product Description	Mouse monoclonal antibody raised against recombinant human BTN2A2.
Immunogen	Recombinant protein corresponding to amino acid 57-237 of human BTN2A2 from <i>E. coli</i> .
Host	Mouse
Theoretical MW (kDa)	59
Reactivity	Human
Form	Liquid
Isotype	IgG1
Recommend Usage	ELISA (1:10000) Western Blot (1:500-1:2000) Immunocytochemistry Flow Cytometry (1:200-1:400) Immunohistochemistry (1:200-1:1000) The optimal working dilution should be determined by the end user.
Storage Buffer	In PBS (0.05% sodium azide).
Storage Instruction	Store at 4°C. For long term storage store at -20°C. Aliquot to avoid repeated freezing and thawing.
Note	This product contains sodium azide: a POISONOUS AND HAZARDOUS SUBSTANCE which should be handled by trained staff only.

Applications

- Western Blot (Transfected lysate)

Western blot analysis of (1) HEK293 cells, (2) BTN2A2-hlgGfc transfected HEK293 cell lysate.

- Immunohistochemistry (Formalin/PFA-fixed paraffin-embedded sections)

Immunohistochemical staining of paraffin-embedded bladder cancer tissues with BTN2A2 monoclonal antibody.

- Enzyme-linked Immunoabsorbent Assay

ELISA analysis of BTN2A2 monoclonal antibody, clone 6C7D2.

- Flow Cytometry

Flow cytometric analysis of Hela cells with BTN2A2 monoclonal antibody (green) and negative control (red).

Gene Info — BTN2A2

Entrez GeneID	10385
---------------	-----------------------

Gene Name	BTN2A2
-----------	--------

Gene Alias	BT2.2, BTF2, FLJ41908
------------	-----------------------

Gene Description	butyrophilin, subfamily 2, member A2
------------------	--------------------------------------

Gene Ontology	Hyperlink
---------------	---------------------------

Gene Summary	Butyrophilin is the major protein associated with fat droplets in the milk. This gene is a member of the BTN2 subfamily of genes, which encode proteins belonging to the butyrophilin protein family. The gene is located in a cluster on chromosome 6, consisting of seven genes belonging to the expanding B7/butyrophilin-like group, a subset of the immunoglobulin gene superfamily. The encoded protein is a type 1 receptor glycoprotein involved in lipid, fatty-acid and sterol metabolism. Several alternatively spliced transcript variants of this gene have been described, but the full-length nature of some variants has not been determined. [provided by RefSeq]
--------------	--

Other Designations	OTTHUMP00000016167 butyrophilin 2
--------------------	-----------------------------------