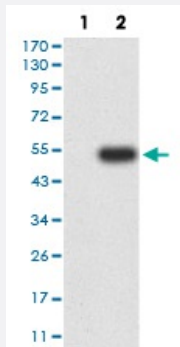


ICAM2 monoclonal antibody, clone 7A6E11

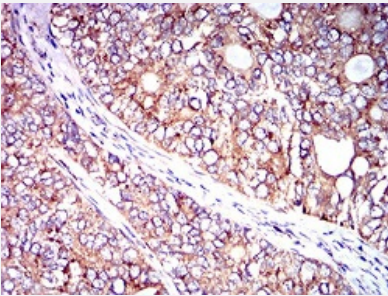
Catalog # MAB17623 Size 100 ug

Applications



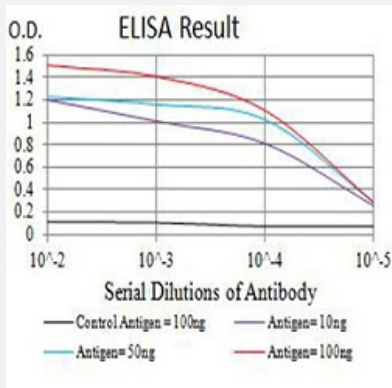
Western Blot (Transfected lysate)

Western blot analysis of (1) HEK293 cells, (2) ICAM2-hlgGfc transfected HEK293 cell lysate.



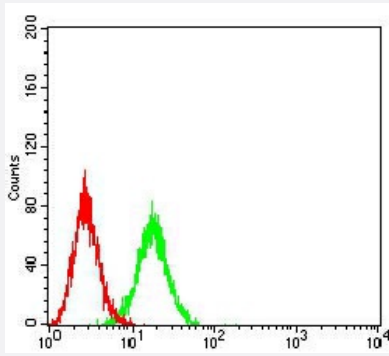
Immunohistochemistry (Formalin/PFA-fixed paraffin-embedded sections)

Immunohistochemical staining of paraffin-embedded cervical cancer tissue with ICAM2 monoclonal antibody.



Enzyme-linked Immunoabsorbent Assay

ELISA analysis of ICAM2 monoclonal antibody, clone 7A6E11.



Flow Cytometry

Flow cytometric analysis of Ramos cells with ICAM2 monoclonal antibody (green) and negative control (red).

Specification

Product Description	Mouse monoclonal antibody raised against recombinant human ICAM2.
Immunogen	Recombinant protein corresponding to amino acid 25-223 of human ICAM2 from <i>E. coli</i> .
Host	Mouse
Theoretical MW (kDa)	30.7
Reactivity	Human
Form	Liquid
Isotype	IgG1
Recommend Usage	ELISA (1:10000) Western Blot (1:500-1:2000) Immunocytochemistry Flow Cytometry (1:200-1:400) Immunohistochemistry (1:200-1:1000) The optimal working dilution should be determined by the end user.
Storage Buffer	In PBS (0.05% sodium azide).
Storage Instruction	Store at 4°C. For long term storage store at -20°C. Aliquot to avoid repeated freezing and thawing.
Note	This product contains sodium azide: a POISONOUS AND HAZARDOUS SUBSTANCE which should be handled by trained staff only.

Applications

- Western Blot (Transfected lysate)

Western blot analysis of (1) HEK293 cells, (2) ICAM2-hlgGFc transfected HEK293 cell lysate.

- Immunohistochemistry (Formalin/PFA-fixed paraffin-embedded sections)

Immunohistochemical staining of paraffin-embedded cervical cancer tissue with ICAM2 monoclonal antibody.

- Enzyme-linked Immunoabsorbent Assay

ELISA analysis of ICAM2 monoclonal antibody, clone 7A6E11.

- Flow Cytometry

Flow cytometric analysis of Ramos cells with ICAM2 monoclonal antibody (green) and negative control (red).

Gene Info — ICAM2

Entrez GeneID [3384](#)

Gene Name ICAM2

Gene Alias CD102

Gene Description intercellular adhesion molecule 2

Omim ID [146630](#)

Gene Ontology [Hyperlink](#)

Gene Summary The protein encoded by this gene is a member of the intercellular adhesion molecule (ICAM) family. All ICAM proteins are type I transmembrane glycoproteins, contain 2-9 immunoglobulin-like C2-type domains, and bind to the leukocyte adhesion LFA-1 protein. This protein may play a role in lymphocyte recirculation by blocking LFA-1-dependent cell adhesion. It mediates adhesive interactions important for antigen-specific immune response, NK-cell mediated clearance, lymphocyte recirculation, and other cellular interactions important for immune response and surveillance. Several transcript variants encoding the same protein have been found for this gene. [provided by RefSeq]

Other Designations -

Pathway

- [Cell adhesion molecules \(CAMs\)](#)
- [Natural killer cell mediated cytotoxicity](#)

Disease

- [Birth Weight](#)
- [Genetic Predisposition to Disease](#)
- [Glioblastoma](#)
- [Glioma](#)
- [Leukemia](#)
- [Meningeal Neoplasms](#)
- [Meningioma](#)