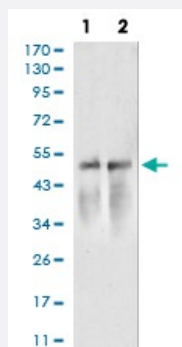


ACTR3 monoclonal antibody, clone 3G2C9

Catalog # MAB17621

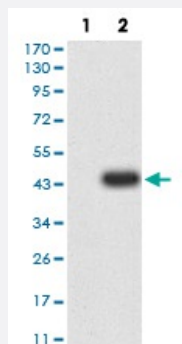
Size 100 ug

Applications



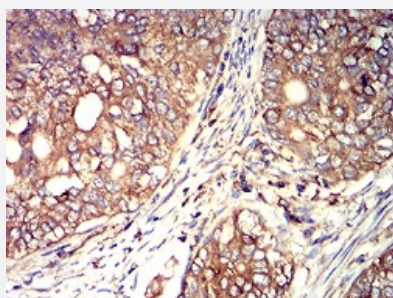
Western Blot (Cell lysate)

Western blot analysis of (1) NIH/3T3 cell, (2) A549 cell with ACTR3 monoclonal antibody.



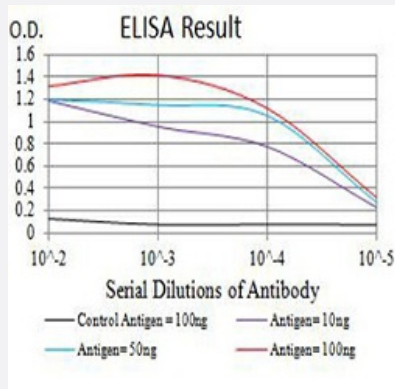
Western Blot (Transfected lysate)

Western blot analysis of (1) HEK293 cells, (2) ACTR3-hlgGfc transfected HEK293 cell lysate.



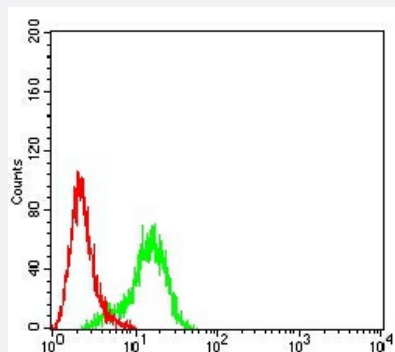
Immunohistochemistry (Formalin/PFA-fixed paraffin-embedded sections)

Immunohistochemical staining of paraffin-embedded cervical cancer tissue with ACTR3 monoclonal antibody.



Enzyme-linked Immunoabsorbent Assay

ELISA analysis of ACTR3 monoclonal antibody, clone 3G2C9.



Flow Cytometry

Flow cytometric analysis of Hela cells with ACTR3 monoclonal antibody (green) and negative control (red).

Specification

Product Description

Mouse monoclonal antibody raised against recombinant human ACTR3.

Immunogen

Recombinant protein corresponding to amino acid 287-418 of human ACTR3 from *E. coli*.

Host

Mouse

Theoretical MW (kDa)

47.4

Reactivity

Human, Mouse

Form

Liquid

Isotype

IgG1

Recommend Usage

ELISA (1:10000)
Western Blot (1:500-1:2000)
Immunocytochemistry
Flow Cytometry (1:200-1:400)
Immunohistochemistry (1:200-1:1000)
The optimal working dilution should be determined by the end user.

Storage Buffer

In PBS (0.05% sodium azide).

Storage Instruction

Store at 4°C. For long term storage store at -20°C.
Aliquot to avoid repeated freezing and thawing.

Note

This product contains sodium azide: a POISONOUS AND HAZARDOUS SUBSTANCE which should be handled by trained staff only.

Applications

- Western Blot (Cell lysate)

Western blot analysis of (1) NIH/3T3 cell, (2) A549 cell with ACTR3 monoclonal antibody.

- Western Blot (Transfected lysate)

Western blot analysis of (1) HEK293 cells, (2) ACTR3-hlgGfc transfected HEK293 cell lysate.

- Immunohistochemistry (Formalin/PFA-fixed paraffin-embedded sections)

Immunohistochemical staining of paraffin-embedded cervical cancer tissue with ACTR3 monoclonal antibody.

- Enzyme-linked Immunoabsorbent Assay

ELISA analysis of ACTR3 monoclonal antibody, clone 3G2C9.

- Flow Cytometry

Flow cytometric analysis of Hela cells with ACTR3 monoclonal antibody (green) and negative control (red).

Gene Info — ACTR3

Entrez GeneID[10096](#)**Gene Name**

ACTR3

Gene Alias

ARP3

Gene Description

ARP3 actin-related protein 3 homolog (yeast)

Omim ID[604222](#)**Gene Ontology**[Hyperlink](#)**Gene Summary**

The specific function of this gene has not yet been determined; however, the protein it encodes is known to be a major constituent of the ARP2/3 complex. This complex is located at the cell surface and is essential to cell shape and motility through lamellipodial actin assembly and protrusion. [provided by RefSeq]

Other Designations

ARP3 actin-related protein 3 homolog