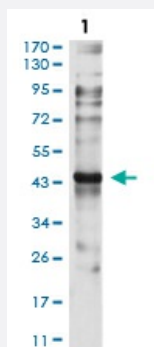


# CCR7 monoclonal antibody, clone 7A5A9

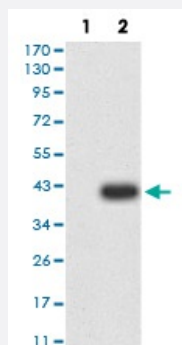
Catalog # MAB17600      Size 100 ug

## Applications



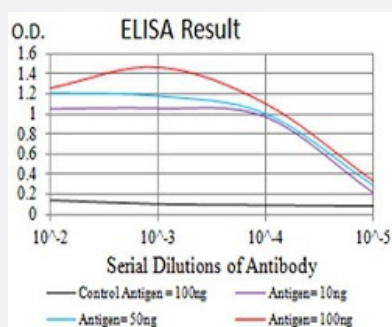
### Western Blot (Cell lysate)

Western blot analysis of C6 cell with CCR7 monoclonal antibody.



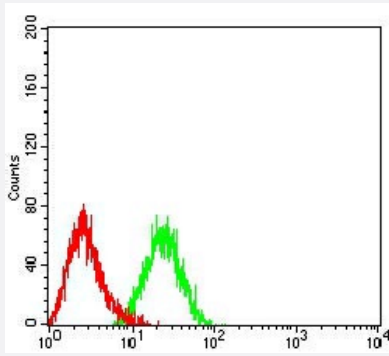
### Western Blot (Transfected lysate)

Western blot analysis of (1) HEK293 cells, (2) CCR7-hlgGfc transfected HEK293 cell lysate.



### Enzyme-linked Immunoabsorbent Assay

ELISA analysis of CCR7 monoclonal antibody, clone 7A5A9.



## Flow Cytometry

Flow cytometric analysis of HL-60 cells with CCR7 monoclonal antibody (green) and negative control (red).

## Specification

<b>Product Description</b>	Mouse monoclonal antibody raised against recombinant human CCR7.
<b>Immunogen</b>	Recombinant protein corresponding to amino acid of human CCR7 from <i>E. coli</i> .
<b>Host</b>	Mouse
<b>Theoretical MW (kDa)</b>	42.9
<b>Reactivity</b>	Human
<b>Form</b>	Liquid
<b>Isotype</b>	IgG1
<b>Recommend Usage</b>	ELISA (1:10000) Western Blot (1:500-1:2000) Immunocytochemistry Flow Cytometry (1:200-1:400) Immunohistochemistry The optimal working dilution should be determined by the end user.
<b>Storage Buffer</b>	In PBS (0.05% sodium azide).
<b>Storage Instruction</b>	Store at 4°C. For long term storage store at -20°C. Aliquot to avoid repeated freezing and thawing.
<b>Note</b>	This product contains sodium azide: a POISONOUS AND HAZARDOUS SUBSTANCE which should be handled by trained staff only.

## Applications

- Western Blot (Cell lysate)

Western blot analysis of C6 cell with CCR7 monoclonal antibody.

- Western Blot (Transfected lysate)

Western blot analysis of (1) HEK293 cells, (2) CCR7-hlgGFc transfected HEK293 cell lysate.

- Enzyme-linked Immunoabsorbent Assay

ELISA analysis of CCR7 monoclonal antibody, clone 7A5A9.

- Flow Cytometry

Flow cytometric analysis of HL-60 cells with CCR7 monoclonal antibody (green) and negative control (red).

## Gene Info — CCR7

Entrez GeneID [1236](#)

Gene Name CCR7

Gene Alias BLR2, CD197, CDw197, CMKBR7, EB11

Gene Description chemokine (C-C motif) receptor 7

Omim ID [600242](#)

Gene Ontology [Hyperlink](#)

**Gene Summary** The protein encoded by this gene is a member of the G protein-coupled receptor family. This receptor was identified as a gene induced by the Epstein-Barr virus (EBV), and is thought to be a mediator of EBV effects on B lymphocytes. This receptor is expressed in various lymphoid tissues and activates B and T lymphocytes. It has been shown to control the migration of memory T cells to inflamed tissues, as well as stimulate dendritic cell maturation. The chemokine (C-C motif) ligand 19 (CCL19/ECL) has been reported to be a specific ligand of this receptor. [provided by RefSeq]

**Other Designations** C-C chemokine receptor type 7|CC chemokine receptor 7|EBV-induced G protein-coupled receptor 1|Epstein-Barr virus induced G-protein coupled receptor|Epstein-Barr virus induced gene 1|MLP-3 beta receptor|chemokine (C-C) receptor 7|lymphocyte-specific G pro

## Pathway

- [Chemokine signaling pathway](#)
- [Cytokine-cytokine receptor interaction](#)

## Disease

- [Birth Weight](#)
- [Breast cancer](#)
- [Breast Neoplasms](#)
- [Genetic Predisposition to Disease](#)
- [Glioblastoma](#)
- [Glioma](#)
- [HIV Infections](#)
- [Leukemia](#)
- [Lupus Erythematosus](#)
- [Meningeal Neoplasms](#)
- [Meningioma](#)
- [Scleroderma](#)