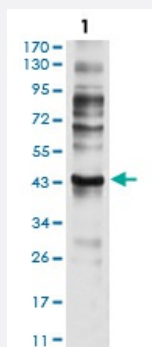


CCR7 monoclonal antibody, clone 4B7B8

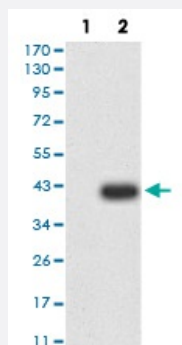
Catalog # MAB17599 Size 100 ug

Applications



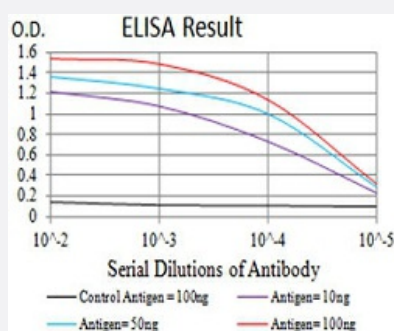
Western Blot (Cell lysate)

Western blot analysis of C6 cell with CCR7 monoclonal antibody.



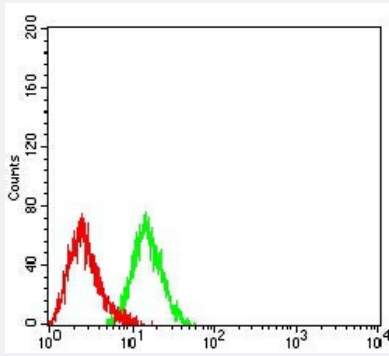
Western Blot (Transfected lysate)

Western blot analysis of (1) HEK293 cells, (2) CCR7-hlgGfc transfected HEK293 cell lysate.



Enzyme-linked Immunoabsorbent Assay

ELISA analysis of CCR7 monoclonal antibody, clone 4B7B8.



Flow Cytometry

Flow cytometric analysis of HL-60 cells with CCR7 monoclonal antibody (green) and negative control (red).

Specification

Product Description	Mouse monoclonal antibody raised against recombinant human CCR7.
Immunogen	Recombinant protein corresponding to amino acid of human CCR7 from <i>E. coli</i> .
Host	Mouse
Theoretical MW (kDa)	42.9
Reactivity	Human
Form	Liquid
Isotype	IgG1
Recommend Usage	ELISA (1:10000) Western Blot (1:500-1:2000) Immunocytochemistry Flow Cytometry (1:200-1:400) Immunohistochemistry The optimal working dilution should be determined by the end user.
Storage Buffer	In PBS (0.05% sodium azide).
Storage Instruction	Store at 4°C. For long term storage store at -20°C. Aliquot to avoid repeated freezing and thawing.
Note	This product contains sodium azide: a POISONOUS AND HAZARDOUS SUBSTANCE which should be handled by trained staff only.

Applications

- Western Blot (Cell lysate)

Western blot analysis of C6 cell with CCR7 monoclonal antibody.

- Western Blot (Transfected lysate)

Western blot analysis of (1) HEK293 cells, (2) CCR7-hlgGfc transfected HEK293 cell lysate.

- Enzyme-linked Immunoabsorbent Assay

ELISA analysis of CCR7 monoclonal antibody, clone 4B7B8.

- Flow Cytometry

Flow cytometric analysis of HL-60 cells with CCR7 monoclonal antibody (green) and negative control (red).

Gene Info — CCR7

Entrez GeneID [1236](#)

Gene Name CCR7

Gene Alias BLR2, CD197, CDw197, CMKBR7, EB11

Gene Description chemokine (C-C motif) receptor 7

Omim ID [600242](#)

Gene Ontology [Hyperlink](#)

Gene Summary The protein encoded by this gene is a member of the G protein-coupled receptor family. This receptor was identified as a gene induced by the Epstein-Barr virus (EBV), and is thought to be a mediator of EBV effects on B lymphocytes. This receptor is expressed in various lymphoid tissues and activates B and T lymphocytes. It has been shown to control the migration of memory T cells to inflamed tissues, as well as stimulate dendritic cell maturation. The chemokine (C-C motif) ligand 19 (CCL19/ECL) has been reported to be a specific ligand of this receptor. [provided by RefSeq]

Other Designations C-C chemokine receptor type 7|CC chemokine receptor 7|EBV-induced G protein-coupled receptor 1|Epstein-Barr virus induced G-protein coupled receptor|Epstein-Barr virus induced gene 1|MLP-3 beta receptor|chemokine (C-C) receptor 7|lymphocyte-specific G pro

Pathway

- [Chemokine signaling pathway](#)
- [Cytokine-cytokine receptor interaction](#)

Disease

- [Birth Weight](#)
- [Breast cancer](#)
- [Breast Neoplasms](#)
- [Genetic Predisposition to Disease](#)
- [Glioblastoma](#)
- [Glioma](#)
- [HIV Infections](#)
- [Leukemia](#)
- [Lupus Erythematosus](#)
- [Meningeal Neoplasms](#)
- [Meningioma](#)
- [Scleroderma](#)