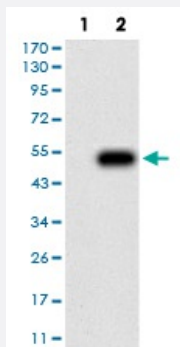


CD207 monoclonal antibody, clone 1C5A1

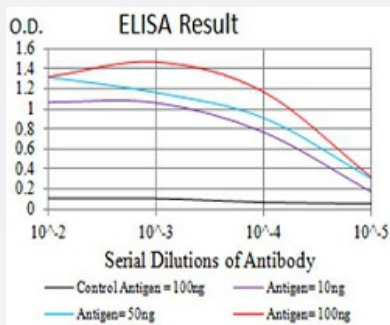
Catalog # MAB17596 Size 100 ug

Applications



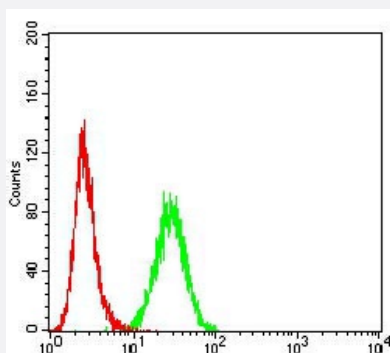
Western Blot (Transfected lysate)

Western blot analysis of (1) HEK293 cells, (2) CD207-hlgGfC transfected HEK293 cell lysate.



Enzyme-linked Immunoabsorbent Assay

ELISA analysis of CD207 monoclonal antibody, clone 1C5A1.



Flow Cytometry

Flow cytometric analysis of K562 cells with CD207 monoclonal antibody (green) and negative control (red).

Specification

Product Description

Mouse monoclonal antibody raised against recombinant human CD207.

Immunogen	Recombinant protein corresponding to amino acid 155-328 of human CD207 from <i>E. coli</i> .
Host	Mouse
Theoretical MW (kDa)	36.7
Reactivity	Human
Form	Liquid
Isotype	IgG2b
Recommend Usage	ELISA (1:10000) Western Blot (1:500-1:2000) Immunocytochemistry Flow Cytometry (1:200-1:400) Immunohistochemistry The optimal working dilution should be determined by the end user.
Storage Buffer	In PBS (0.05% sodium azide).
Storage Instruction	Store at 4°C. For long term storage store at -20°C. Aliquot to avoid repeated freezing and thawing.
Note	This product contains sodium azide: a POISONOUS AND HAZARDOUS SUBSTANCE which should be handled by trained staff only.

Applications

- Western Blot (Transfected lysate)

Western blot analysis of (1) HEK293 cells, (2) CD207-hlgGFc transfected HEK293 cell lysate.

- Enzyme-linked Immunoabsorbent Assay

ELISA analysis of CD207 monoclonal antibody, clone 1C5A1.

- Flow Cytometry

Flow cytometric analysis of K562 cells with CD207 monoclonal antibody (green) and negative control (red).

Gene Info — CD207

Entrez GeneID	50489
Gene Name	CD207
Gene Alias	CLEC4K

Gene Description	CD207 molecule, langerin
Omim ID	604862
Gene Ontology	Hyperlink
Gene Summary	<p>The protein encoded by this gene is expressed only in Langerhans cells which are immature dendritic cells of the epidermis and mucosa. It is localized in the Birbeck granules, organelles present in the cytoplasm of Langerhans cells and consisting of superimposed and zippered membranes. It is a C-type lectin with mannose binding specificity, and it has been proposed that mannose binding by this protein leads to internalization of antigen into Birbeck granules and providing access to a nonclassical antigen-processing pathway. [provided by RefSeq]</p>
Other Designations	C-type lectin domain family 4, member K CD207 antigen, langerin Langerhans cell specific c-type lectin