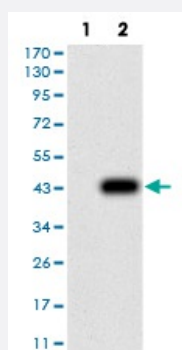


P2RY1 monoclonal antibody, clone 4G5B7

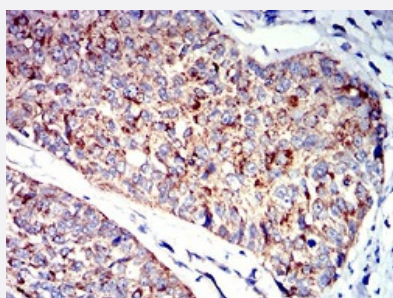
Catalog # MAB17586 Size 100 ug

Applications



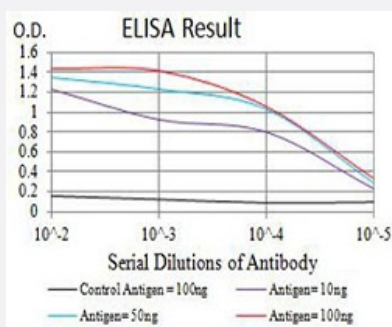
Western Blot (Transfected lysate)

Western blot analysis of (1) HEK293 cells, (2) P2RY1-hlgGfc transfected HEK293 cell lysate.



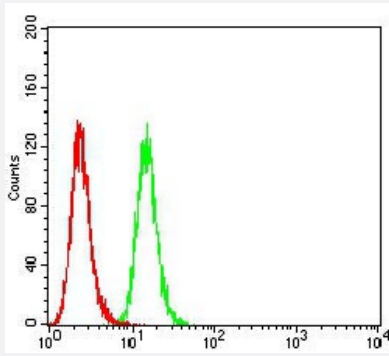
Immunohistochemistry (Formalin/PFA-fixed paraffin-embedded sections)

Immunohistochemical staining of paraffin-embedded bladder cancer tissues with P2RY1 monoclonal antibody.



Enzyme-linked Immunoabsorbent Assay

ELISA analysis of P2RY1 monoclonal antibody, clone 4G5B7.



Flow Cytometry

Flow cytometric analysis of Hela cells with P2RY1 monoclonal antibody (green) and negative control (red).

Specification

Product Description	Mouse monoclonal antibody raised against recombinant human P2RY1.
Immunogen	Recombinant protein corresponding to amino acid of human P2RY1 from <i>E. coli</i> .
Host	Mouse
Theoretical MW (kDa)	42
Reactivity	Human
Form	Liquid
Isotype	IgG2b
Recommend Usage	ELISA (1:10000) Western Blot (1:500-1:2000) Immunocytochemistry Flow Cytometry (1:200-1:400) Immunohistochemistry (1:200-1:1000) The optimal working dilution should be determined by the end user.
Storage Buffer	In PBS (0.05% sodium azide).
Storage Instruction	Store at 4°C. For long term storage store at -20°C. Aliquot to avoid repeated freezing and thawing.
Note	This product contains sodium azide: a POISONOUS AND HAZARDOUS SUBSTANCE which should be handled by trained staff only.

Applications

- Western Blot (Transfected lysate)

Western blot analysis of (1) HEK293 cells, (2) P2RY1-hlgGfc transfected HEK293 cell lysate.

- Immunohistochemistry (Formalin/PFA-fixed paraffin-embedded sections)

Immunohistochemical staining of paraffin-embedded bladder cancer tissues with P2RY1 monoclonal antibody.

- Enzyme-linked Immunoabsorbent Assay

ELISA analysis of P2RY1 monoclonal antibody, clone 4G5B7.

- Flow Cytometry

Flow cytometric analysis of Hela cells with P2RY1 monoclonal antibody (green) and negative control (red).

Gene Info — P2RY1

Entrez GeneID [5028](#)

Gene Name P2RY1

Gene Alias P2Y1

Gene Description purinergic receptor P2Y, G-protein coupled, 1

Omim ID [601167](#)

Gene Ontology [Hyperlink](#)

Gene Summary The product of this gene belongs to the family of G-protein coupled receptors. This family has several receptor subtypes with different pharmacological selectivity, which overlaps in some cases, for various adenosine and uridine nucleotides. This receptor functions as a receptor for extracellular ATP and ADP. In platelets binding to ADP leads to mobilization of intracellular calcium ions via activation of phospholipase C, a change in platelet shape, and probably to platelet aggregation. [provided by RefSeq]

Other Designations ATP receptor|P2 purinoceptor subtype Y1|P2Y purinoceptor 1|platelet ADP receptor|purinergic receptor P2Y1

Pathway

- [Neuroactive ligand-receptor interaction](#)

Disease

- [Atherosclerosis](#)
- [Cardiovascular Diseases](#)
- [Coronary Disease](#)
- [Diabetes Mellitus](#)
- [Edema](#)
- [HIV Infections](#)
- [Vascular Diseases](#)