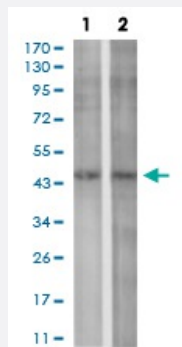


# P2RY1 monoclonal antibody, clone 4G5D6

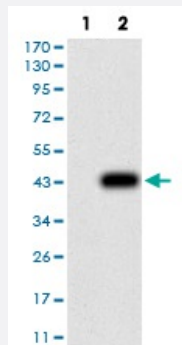
Catalog # MAB17585      Size 100 ug

## Applications



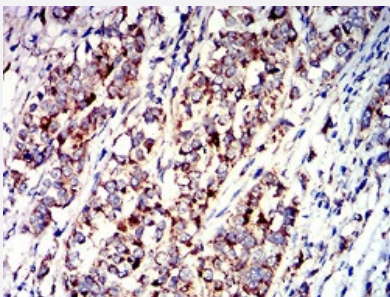
### Western Blot (Cell lysate)

Western blot analysis of (1) SPC-A-1 cell, (2) C6 cell with P2RY1 monoclonal antibody.



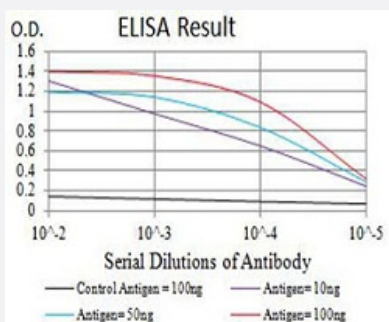
### Western Blot (Transfected lysate)

Western blot analysis of (1) HEK293 cells, (2) P2RY1-hlgGfc transfected HEK293 cell lysate.



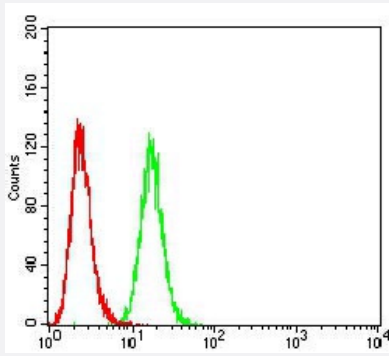
### Immunohistochemistry (Formalin/PFA-fixed paraffin-embedded sections)

Immunohistochemical staining of paraffin-embedded bladder cancer tissues with P2RY1 monoclonal antibody.



### Enzyme-linked Immunoabsorbent Assay

ELISA analysis of P2RY1 monoclonal antibody, clone 4G5D6.



## Flow Cytometry

Flow cytometric analysis of Hela cells with P2RY1 monoclonal antibody (green) and negative control (red).

## Specification

<b>Product Description</b>	Mouse monoclonal antibody raised against recombinant human P2RY1.
<b>Immunogen</b>	Recombinant protein corresponding to amino acid of human P2RY1 from <i>E. coli</i> .
<b>Host</b>	Mouse
<b>Theoretical MW (kDa)</b>	42
<b>Reactivity</b>	Human, Rat
<b>Form</b>	Liquid
<b>Isotype</b>	IgG2b
<b>Recommend Usage</b>	ELISA (1:10000) Western Blot (1:500-1:2000) Immunocytochemistry Flow Cytometry (1:200-1:400) Immunohistochemistry (1:200-1:1000) The optimal working dilution should be determined by the end user.
<b>Storage Buffer</b>	In PBS (0.05% sodium azide).
<b>Storage Instruction</b>	Store at 4°C. For long term storage store at -20°C. Aliquot to avoid repeated freezing and thawing.
<b>Note</b>	This product contains sodium azide: a POISONOUS AND HAZARDOUS SUBSTANCE which should be handled by trained staff only.

## Applications

- Western Blot (Cell lysate)

Western blot analysis of (1) SPC-A-1 cell, (2) C6 cell with P2RY1 monoclonal antibody.

- Western Blot (Transfected lysate)

Western blot analysis of (1) HEK293 cells, (2) P2RY1-hlgGfc transfected HEK293 cell lysate.

- Immunohistochemistry (Formalin/PFA-fixed paraffin-embedded sections)

Immunohistochemical staining of paraffin-embedded bladder cancer tissues with P2RY1 monoclonal antibody.

- Enzyme-linked Immunoabsorbent Assay

ELISA analysis of P2RY1 monoclonal antibody, clone 4G5D6.

- Flow Cytometry

Flow cytometric analysis of Hela cells with P2RY1 monoclonal antibody (green) and negative control (red).

## Gene Info — P2RY1

Entrez GeneID

[5028](#)

Gene Name

P2RY1

Gene Alias

P2Y1

Gene Description

purinergic receptor P2Y, G-protein coupled, 1

Omim ID

[601167](#)

Gene Ontology

[Hyperlink](#)

Gene Summary

The product of this gene belongs to the family of G-protein coupled receptors. This family has several receptor subtypes with different pharmacological selectivity, which overlaps in some cases, for various adenosine and uridine nucleotides. This receptor functions as a receptor for extracellular ATP and ADP. In platelets binding to ADP leads to mobilization of intracellular calcium ions via activation of phospholipase C, a change in platelet shape, and probably to platelet aggregation. [provided by RefSeq]

Other Designations

ATP receptor|P2 purinoceptor subtype Y1|P2Y purinoceptor 1|platelet ADP receptor|purinergic receptor P2Y1

## Pathway

- [Neuroactive ligand-receptor interaction](#)

## Disease

- [Atherosclerosis](#)
- [Cardiovascular Diseases](#)
- [Coronary Disease](#)
- [Diabetes Mellitus](#)
- [Edema](#)
- [HIV Infections](#)
- [Vascular Diseases](#)