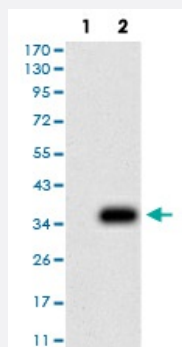


P2RY8 monoclonal antibody, clone 1G5A11

Catalog # MAB17577

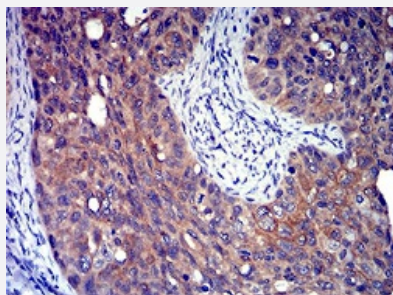
Size 100 ug

Applications



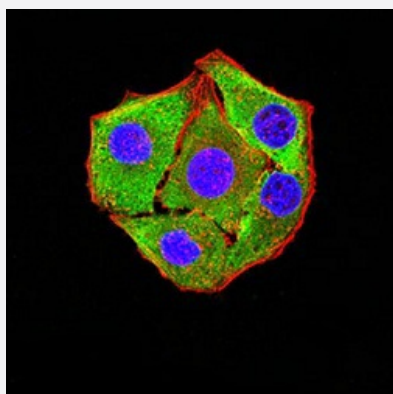
Western Blot (Transfected lysate)

Western blot analysis of (1) HEK293 cells, (2) P2RY8-hlgGfC transfected HEK293 cell lysate.



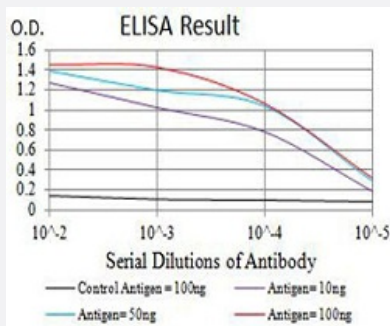
Immunohistochemistry (Formalin/PFA-fixed paraffin-embedded sections)

Immunohistochemical staining of paraffin-embedded cervical cancer tissue with P2RY8 monoclonal antibody.



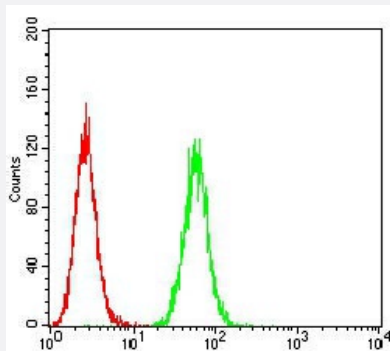
Immunocytochemistry

Immunocytochemical staining of HeLa cells with P2RY8 monoclonal antibody (green). DRAQ5 fluorescent DNA dye (blue). Actin filaments labeled with Alexa Fluor-555 phalloidin (red).



Enzyme-linked Immunoabsorbent Assay

ELISA analysis of P2RY8 monoclonal antibody, clone 1G5A11.



Flow Cytometry

Flow cytometric analysis of HeLa cells with P2RY8 monoclonal antibody (green) and negative control (red).

Specification

Product Description	Mouse monoclonal antibody raised against recombinant human P2RY8.
Immunogen	Recombinant protein corresponding to amino acid of human P2RY8 from <i>E. coli</i> .
Host	Mouse
Theoretical MW (kDa)	40.6
Reactivity	Human
Form	Liquid
Isotype	IgG2a
Recommend Usage	ELISA (1:10000) Western Blot (1:500-1:2000) Immunocytochemistry (1:100-1:500) Flow Cytometry (1:200-1:400) Immunohistochemistry (1:200-1:1000) The optimal working dilution should be determined by the end user.
Storage Buffer	In PBS (0.05% sodium azide).
Storage Instruction	Store at 4°C. For long term storage store at -20°C. Aliquot to avoid repeated freezing and thawing.

Note

This product contains sodium azide: a POISONOUS AND HAZARDOUS SUBSTANCE which should be handled by trained staff only.

Applications

- Western Blot (Transfected lysate)

Western blot analysis of (1) HEK293 cells, (2) P2RY8-hlgGfc transfected HEK293 cell lysate.

- Immunohistochemistry (Formalin/PFA-fixed paraffin-embedded sections)

Immunohistochemical staining of paraffin-embedded cervical cancer tissue with P2RY8 monoclonal antibody.

- Immunocytochemistry

Immunocytochemical staining of HeLa cells with P2RY8 monoclonal antibody (green). DRAQ5 fluorescent DNA dye (blue). Actin filaments labeled with Alexa Fluor-555 phalloidin (red).

- Enzyme-linked Immunoabsorbent Assay

ELISA analysis of P2RY8 monoclonal antibody, clone 1G5A11.

- Flow Cytometry

Flow cytometric analysis of HeLa cells with P2RY8 monoclonal antibody (green) and negative control (red).

Gene Info — P2RY8

Entrez GeneID [286530](#)

Gene Name P2RY8

Gene Alias MGC50878, P2Y8

Gene Description purinergic receptor P2Y, G-protein coupled, 8

Omim ID [300525](#)

Gene Ontology [Hyperlink](#)

Gene Summary The protein encoded by this gene belongs to the family of G-protein coupled receptors, that are preferentially activated by adenosine and uridine nucleotides. This gene is moderately expressed in undifferentiated HL60 cells, and is located on both chromosomes X and Y. [provided by RefSeq]

Other Designations G-protein coupled purinergic receptor P2Y8|OTTHUMP00000022830

Pathway

- [Neuroactive ligand-receptor interaction](#)