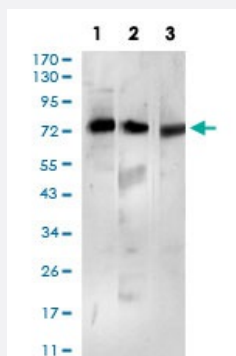


BTRC monoclonal antibody, clone 3D5E6

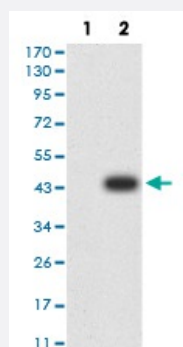
Catalog # MAB17560 Size 100 ug

Applications



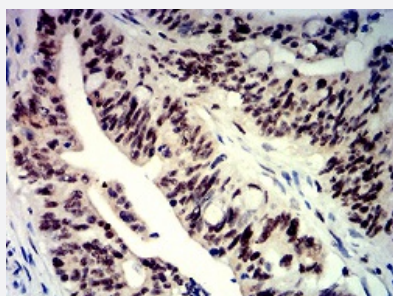
Western Blot (Cell lysate)

Western blot analysis of (1) Ramos cell, (2) MCF-7 cell, (3) K562 cell with BTRC monoclonal antibody.



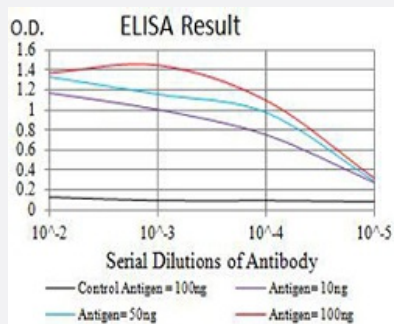
Western Blot (Transfected lysate)

Western blot analysis of (1) HEK293 cells, (2) BTRC-hlgGfc transfected HEK293 cell lysate.



Immunohistochemistry (Formalin/PFA-fixed paraffin-embedded sections)

Immunohistochemical staining of paraffin-embedded rectum cancer tissues with BTRC monoclonal antibody.



Enzyme-linked Immunoabsorbent Assay

ELISA analysis of BTRC monoclonal antibody, clone 3D5E6.

Specification

Product Description	Mouse monoclonal antibody raised against recombinant human BTRC.
Immunogen	Recombinant protein corresponding to amino acid 24-151 of human BTRC from <i>E. coli</i> .
Host	Mouse
Theoretical MW (kDa)	68.9
Reactivity	Human
Form	Liquid
Isotype	IgG1
Recommend Usage	ELISA (1:10000) Western Blot (1:500-1:2000) Immunocytochemistry Flow Cytometry Immunohistochemistry (1:200-1:1000) The optimal working dilution should be determined by the end user.
Storage Buffer	In PBS (0.05% sodium azide).
Storage Instruction	Store at 4°C. For long term storage store at -20°C. Aliquot to avoid repeated freezing and thawing.
Note	This product contains sodium azide: a POISONOUS AND HAZARDOUS SUBSTANCE which should be handled by trained staff only.

Applications

- Western Blot (Cell lysate)

Western blot analysis of (1) Ramos cell, (2) MCF-7 cell, (3) K562 cell with BTRC monoclonal antibody.

- Western Blot (Transfected lysate)

Western blot analysis of (1) HEK293 cells, (2) BTRC-hlgGfc transfected HEK293 cell lysate.

- Immunohistochemistry (Formalin/PFA-fixed paraffin-embedded sections)

Immunohistochemical staining of paraffin-embedded rectum cancer tissues with BTRC monoclonal antibody.

- Enzyme-linked Immunoabsorbent Assay

ELISA analysis of BTRC monoclonal antibody, clone 3D5E6.

Gene Info — BTRC

Entrez GeneID [8945](#)

Gene Name BTRC

Gene Alias BETA-TRCP, FBW1A, FBXW1, FBXW1A, FWD1, MGC4643, bTrCP, bTrCP1, betaTrCP

Gene Description beta-transducin repeat containing

Omim ID [603482](#)

Gene Ontology [Hyperlink](#)

Gene Summary

This gene encodes a member of the F-box protein family which is characterized by an approximately 40 amino acid motif, the F-box. The F-box proteins constitute one of the four subunits of ubiquitin protein ligase complex called SCFs (SKP1-cullin-F-box), which function in phosphorylation-dependent ubiquitination. The F-box proteins are divided into 3 classes: Fbws containing WD-40 domains, Fbls containing leucine-rich repeats, and Fbxs containing either different protein-protein interaction modules or no recognizable motifs. The protein encoded by this gene belongs to the Fbw s class; in addition to an F-box, this protein contains multiple WD-40 repeats. This protein is homologous to Xenopus bTrCP1, yeast Met30, Neurospora Scon2 and Drosophila Slimb proteins. It interacts with HIV-1 Vpu and connects CD4 to the proteolytic machinery. It also associates specifically with phosphorylated I κ B α and beta-catenin destruction motifs, probably functioning in multiple transcriptional programs by activating the NF- κ B pathway and inhibiting the beta-catenin pathway. [provided by RefSeq]

Other Designations OTTHUMP00000020314|OTTHUMP00000020315|beta-TrCP1|beta-transducin repeat containing protein

Pathway

- [Hedgehog signaling pathway](#)
- [Ubiquitin mediated proteolysis](#)
- [Wnt signaling pathway](#)

Disease

- [Alzheimer Disease](#)
- [Carcinoma](#)
- [Genetic Predisposition to Disease](#)
- [Liver Neoplasms](#)
- [Stomach Neoplasms](#)
- [Tobacco Use Disorder](#)