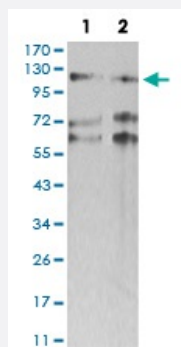


SMARCA1 monoclonal antibody, clone 2H7B8

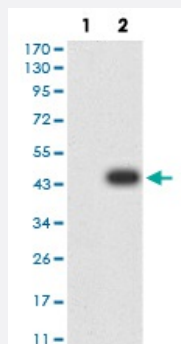
Catalog # MAB17517 Size 100 ug

Applications



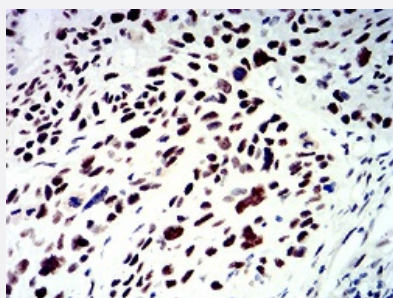
Western Blot (Cell lysate)

Western blot analysis of (1) SW620 cell, (2) HT-29 cell with SMARCA1 monoclonal antibody.



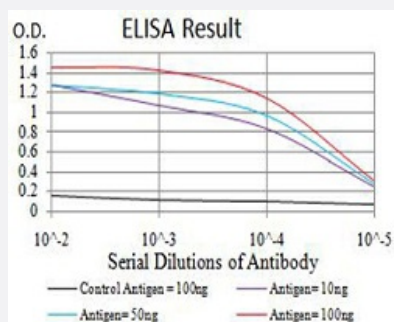
Western Blot (Transfected lysate)

Western blot analysis of (1) HEK293 cells, (2) SMARCA1-hlgGfc transfected HEK293 cell lysate.



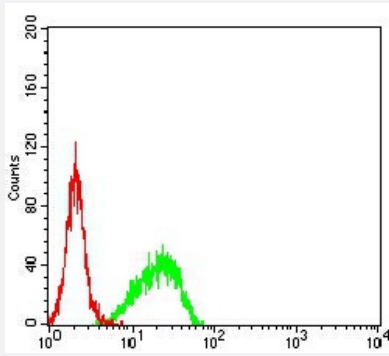
Immunohistochemistry (Formalin/PFA-fixed paraffin-embedded sections)

Immunohistochemical staining of paraffin-embedded esophageal cancer tissues with SMARCA1 monoclonal antibody.



Enzyme-linked Immunoabsorbent Assay

ELISA analysis of SMARCA1 monoclonal antibody, clone 2H7B8.



Flow Cytometry

Flow cytometric analysis of NIH/3T3 cells with SMARCA1 monoclonal antibody (green) and negative control (red).

Specification

Product Description	Mouse monoclonal antibody raised against recombinant human SMARCA1.
Immunogen	Recombinant protein corresponding to amino acid 933-1070 of human SMARCA1 from <i>E. coli</i> .
Host	Mouse
Theoretical MW (kDa)	122.6
Reactivity	Human, Mouse
Form	Liquid
Isotype	IgG1
Recommend Usage	ELISA (1:10000) Western Blot (1:500-1:2000) Immunocytochemistry Flow Cytometry (1:200-1:400) Immunohistochemistry (1:200-1:1000) The optimal working dilution should be determined by the end user.
Storage Buffer	In PBS (0.05% sodium azide).
Storage Instruction	Store at 4°C. For long term storage store at -20°C. Aliquot to avoid repeated freezing and thawing.
Note	This product contains sodium azide: a POISONOUS AND HAZARDOUS SUBSTANCE which should be handled by trained staff only.

Applications

- Western Blot (Cell lysate)

Western blot analysis of (1) SW620 cell, (2) HT-29 cell with SMARCA1 monoclonal antibody.

- Western Blot (Transfected lysate)

Western blot analysis of (1) HEK293 cells, (2) SMARCA1-hlgGfc transfected HEK293 cell lysate.

- Immunohistochemistry (Formalin/PFA-fixed paraffin-embedded sections)

Immunohistochemical staining of paraffin-embedded esophageal cancer tissues with SMARCA1 monoclonal antibody.

- Enzyme-linked Immunoabsorbent Assay

ELISA analysis of SMARCA1 monoclonal antibody, clone 2H7B8.

- Flow Cytometry

Flow cytometric analysis of NIH/3T3 cells with SMARCA1 monoclonal antibody (green) and negative control (red).

Gene Info — SMARCA1

Entrez GeneID	6594
Gene Name	SMARCA1
Gene Alias	DKFZp686D1623, FLJ41547, ISWI, NURF140, SNF2L, SNF2L1, SNF2LB, SWI, SWI2
Gene Description	SWI/SNF related, matrix associated, actin dependent regulator of chromatin, subfamily a, member 1
Omim ID	300012
Gene Ontology	Hyperlink
Gene Summary	This gene encodes a member of the SWI/SNF family of proteins. Members of this family have helicase and ATPase activities and are thought to regulate transcription of certain genes by altering the chromatin structure around those genes. Alternatively spliced transcript variants encoding different isoforms have been found for this gene. [provided by RefSeq]
Other Designations	OTTHUMP00000023984 OTTHUMP00000062565 SNF2-like 1 SWI/SNF-related matrix-associated actin-dependent regulator of chromatin a1 global transcription activator homologous sequence sucrose nonfermenting 2-like protein 1