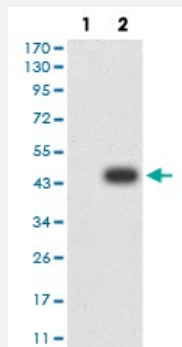


JMJD2B monoclonal antibody, clone 3A6H6

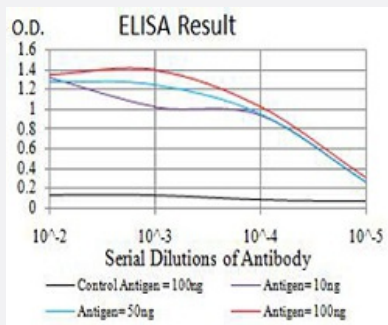
Catalog # MAB17513 Size 100 ug

Applications



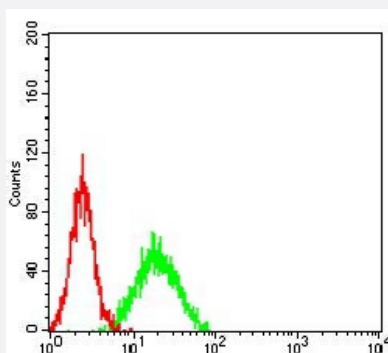
Western Blot (Transfected lysate)

Western blot analysis of (1) HEK293 cells, (2) JMJD2B-hlgGfc transfected HEK293 cell lysate.



Enzyme-linked Immunoabsorbent Assay

ELISA analysis of JMJD2B monoclonal antibody, clone 3A6H6.



Flow Cytometry

Flow cytometric analysis of NIH/3T3 cells with JMJD2B monoclonal antibody (green) and negative control (red).

Specification

Product Description

Mouse monoclonal antibody raised against recombinant human JMJD2B.

Immunogen	Recombinant protein corresponding to amino acid 960-1096 of human JMJD2B from <i>E. coli</i> .
Host	Mouse
Theoretical MW (kDa)	122
Reactivity	Human, Mouse
Form	Liquid
Isotype	IgG1
Recommend Usage	ELISA (1:10000) Western Blot (1:500-1:2000) Immunocytochemistry Flow Cytometry (1:200-1:400) Immunohistochemistry The optimal working dilution should be determined by the end user.
Storage Buffer	In PBS (0.05% sodium azide).
Storage Instruction	Store at 4°C. For long term storage store at -20°C. Aliquot to avoid repeated freezing and thawing.
Note	This product contains sodium azide: a POISONOUS AND HAZARDOUS SUBSTANCE which should be handled by trained staff only.

Applications

- Western Blot (Transfected lysate)

Western blot analysis of (1) HEK293 cells, (2) JMJD2B-hlgGFc transfected HEK293 cell lysate.

- Enzyme-linked Immunoabsorbent Assay

ELISA analysis of JMJD2B monoclonal antibody, clone 3A6H6.

- Flow Cytometry

Flow cytometric analysis of NIH/3T3 cells with JMJD2B monoclonal antibody (green) and negative control (red).

Gene Info — JMJD2B

Entrez GeneID	23030
Gene Name	JMJD2B
Gene Alias	FLJ44906, KDM4B, KIAA0876

Gene Description	jumonji domain containing 2B
Omim ID	609765
Gene Ontology	Hyperlink
Other Designations	-

Disease

- [Tobacco Use Disorder](#)