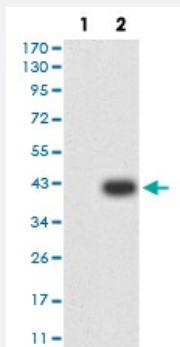


IGLC2 monoclonal antibody, clone 5E12B9

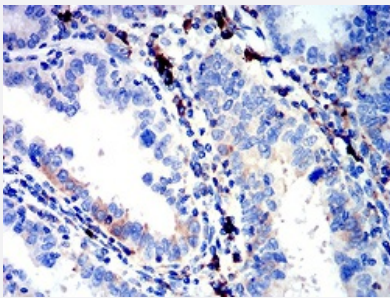
Catalog # MAB17510 Size 100 ug

Applications



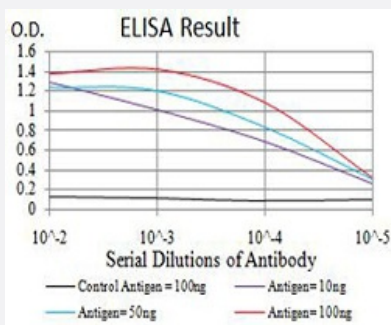
Western Blot (Transfected lysate)

Western blot analysis of (1) HEK293 cells, (2) IGLC2-hlgGfC transfected HEK293 cell lysate.



Immunohistochemistry (Formalin/PFA-fixed paraffin-embedded sections)

Immunohistochemical staining of paraffin-embedded endometrial cancer tissues with IGLC2 monoclonal antibody.



Enzyme-linked Immunoabsorbent Assay

ELISA analysis of IGLC2 monoclonal antibody, clone 5E12B9.

Specification

Product Description

Mouse monoclonal antibody raised against recombinant human IGLC2.

Immunogen

Recombinant protein corresponding to amino acid 1-106 of human IGLC2 from *E. coli*.

Host	Mouse
Theoretical MW (kDa)	11.3
Reactivity	Human
Form	Liquid
Isotype	IgG1
Recommend Usage	ELISA (1:10000) Western Blot (1:500-1:2000) Immunocytochemistry Flow Cytometry Immunohistochemistry (1:200-1:1000) The optimal working dilution should be determined by the end user.
Storage Buffer	In PBS (0.05% sodium azide).
Storage Instruction	Store at 4°C. For long term storage store at -20°C. Aliquot to avoid repeated freezing and thawing.
Note	This product contains sodium azide: a POISONOUS AND HAZARDOUS SUBSTANCE which should be handled by trained staff only.

Applications

- Western Blot (Transfected lysate)

Western blot analysis of (1) HEK293 cells, (2) IGLC2-hlgGfc transfected HEK293 cell lysate.

- Immunohistochemistry (Formalin/PFA-fixed paraffin-embedded sections)

Immunohistochemical staining of paraffin-embedded endometrial cancer tissues with IGLC2 monoclonal antibody.

- Enzyme-linked Immunoabsorbent Assay

ELISA analysis of IGLC2 monoclonal antibody, clone 5E12B9.

Gene Info — IGLC2

Entrez GeneID	3538
Gene Name	IGLC2
Gene Alias	IGLC, MGC20392, MGC45681
Gene Description	immunoglobulin lambda constant 2 (Kern-Oz- marker)

Gene Ontology

[Hyperlink](#)

Other Designations

-