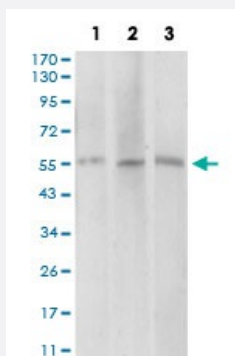


# AEBP2 monoclonal antibody, clone 3E3C10

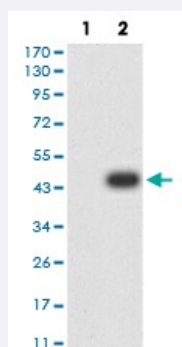
Catalog # MAB17507      Size 100 ug

## Applications



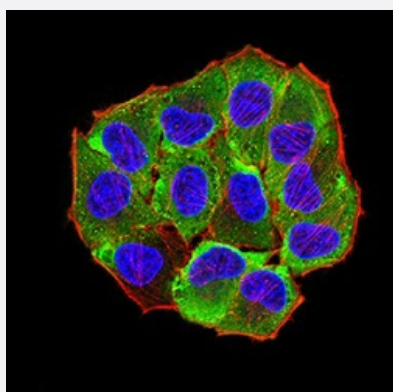
### Western Blot (Cell lysate)

Western blot analysis of (1) COS7 cell, (2) HepG2 cell, (3) SK-MES-1 cell with AEBP2 monoclonal antibody.



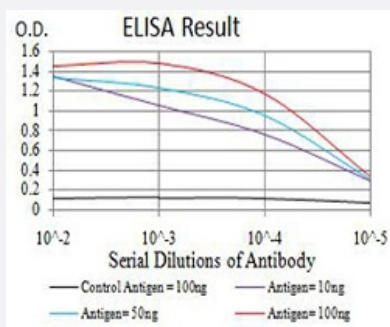
### Western Blot (Transfected lysate)

Western blot analysis of (1) HEK293 cells, (2) AEBP2-hlgGfc transfected HEK293 cell lysate.



### Immunocytochemistry

Immunocytochemical staining of HeLa cells with AEBP2 monoclonal antibody (green). DRAQ5 fluorescent DNA dye (blue). Actin filaments labeled with Alexa Fluor-555 phalloidin (red).



## Enzyme-linked Immunoabsorbent Assay

ELISA analysis of AEBP2 monoclonal antibody, clone 3E3C10.

## Specification

<b>Product Description</b>	Mouse monoclonal antibody raised against recombinant human AEBP2.
<b>Immunogen</b>	Recombinant protein corresponding to amino acid 358-495 of human AEBP2 from <i>E. coli</i> .
<b>Host</b>	Mouse
<b>Theoretical MW (kDa)</b>	54.5
<b>Reactivity</b>	Human
<b>Form</b>	Liquid
<b>Isotype</b>	IgG1
<b>Recommend Usage</b>	ELISA (1:10000) Western Blot (1:500-1:2000) Immunocytochemistry (1:100-1:500) Flow Cytometry Immunohistochemistry The optimal working dilution should be determined by the end user.
<b>Storage Buffer</b>	In PBS (0.05% sodium azide).
<b>Storage Instruction</b>	Store at 4°C. For long term storage store at -20°C. Aliquot to avoid repeated freezing and thawing.
<b>Note</b>	This product contains sodium azide: a POISONOUS AND HAZARDOUS SUBSTANCE which should be handled by trained staff only.

## Applications

- Western Blot (Cell lysate)

Western blot analysis of (1) COS7 cell, (2) HepG2 cell, (3) SK-MES-1 cell with AEBP2 monoclonal antibody.

- Western Blot (Transfected lysate)

Western blot analysis of (1) HEK293 cells, (2) AEBP2-hlgGfc transfected HEK293 cell lysate.

- Immunocytochemistry

Immunocytochemical staining of HeLa cells with AEBP2 monoclonal antibody (green). DRAQ5 fluorescent DNA dye (blue). Actin filaments labeled with Alexa Fluor-555 phalloidin (red).

- Enzyme-linked Immunoabsorbent Assay

ELISA analysis of AEBP2 monoclonal antibody, clone 3E3C10.

## Gene Info — AEBP2

Entrez GeneID	<a href="#">121536</a>
---------------	------------------------

Gene Name	AEBP2
-----------	-------

Gene Alias	MGC17922
------------	----------

Gene Description	AE binding protein 2
------------------	----------------------

Gene Ontology	<a href="#">Hyperlink</a>
---------------	---------------------------

Other Designations	AE(adipocyte enhancer)-binding protein 2
--------------------	--