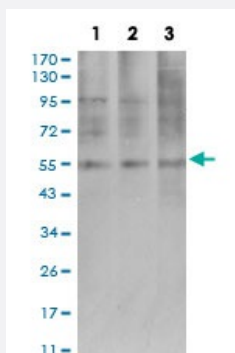


AEBP2 monoclonal antibody, clone 2D7B6

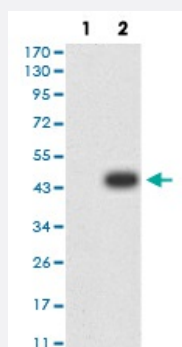
Catalog # MAB17506 Size 100 ug

Applications



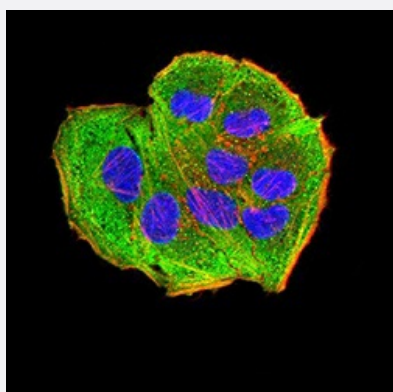
Western Blot (Cell lysate)

Western blot analysis of (1) COS7 cell, (2) HepG2 cell, (3) SK-MES-1 cell with AEBP2 monoclonal antibody.



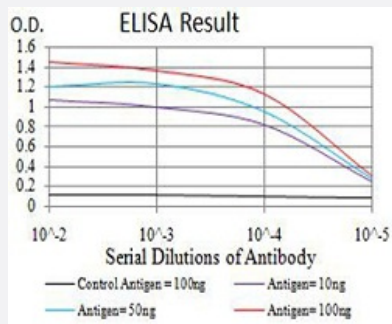
Western Blot (Transfected lysate)

Western blot analysis of (1) HEK293 cells, (2) AEBP2-hlgGfC transfected HEK293 cell lysate.



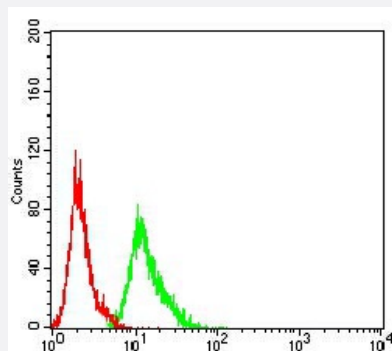
Immunocytochemistry

Immunocytochemical staining of HeLa cells with AEBP2 monoclonal antibody (green). DRAQ5 fluorescent DNA dye (blue). Actin filaments labeled with Alexa Fluor-555 phalloidin (red).



Enzyme-linked Immunoabsorbent Assay

ELISA analysis of AEBP2 monoclonal antibody, clone 2D7B6.



Flow Cytometry

Flow cytometric analysis of MCF-7 cells with AEBP2 monoclonal antibody (green) and negative control (red).

Specification

Product Description	Mouse monoclonal antibody raised against recombinant human AEBP2.
Immunogen	Recombinant protein corresponding to amino acid 358-495 of human AEBP2 from <i>E. coli</i> .
Host	Mouse
Theoretical MW (kDa)	54.5
Reactivity	Human
Form	Liquid
Isotype	IgG1
Recommend Usage	ELISA (1:10000) Western Blot (1:500-1:2000) Immunocytochemistry (1:100-1:500) Flow Cytometry (1:200-1:400) Immunohistochemistry The optimal working dilution should be determined by the end user.
Storage Buffer	In PBS (0.05% sodium azide).
Storage Instruction	Store at 4°C. For long term storage store at -20°C. Aliquot to avoid repeated freezing and thawing.

Note

This product contains sodium azide: a POISONOUS AND HAZARDOUS SUBSTANCE which should be handled by trained staff only.

Applications

- Western Blot (Cell lysate)

Western blot analysis of (1) COS7 cell, (2) HepG2 cell, (3) SK-MES-1 cell with AEBP2 monoclonal antibody.

- Western Blot (Transfected lysate)

Western blot analysis of (1) HEK293 cells, (2) AEBP2-hlgGfc transfected HEK293 cell lysate.

- Immunocytochemistry

Immunocytochemical staining of HeLa cells with AEBP2 monoclonal antibody (green). DRAQ5 fluorescent DNA dye (blue). Actin filaments labeled with Alexa Fluor-555 phalloidin (red).

- Enzyme-linked Immunoabsorbent Assay

ELISA analysis of AEBP2 monoclonal antibody, clone 2D7B6.

- Flow Cytometry

Flow cytometric analysis of MCF-7 cells with AEBP2 monoclonal antibody (green) and negative control (red).

Gene Info — AEBP2

Entrez GeneID	121536
---------------	------------------------

Gene Name	AEBP2
-----------	-------

Gene Alias	MGC17922
------------	----------

Gene Description	AE binding protein 2
------------------	----------------------

Gene Ontology	Hyperlink
---------------	---------------------------

Other Designations	AE(adipocyte enhancer)-binding protein 2
--------------------	--