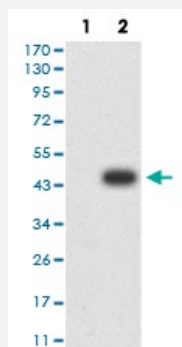


# Toxoplasma gondii ROP1 monoclonal antibody, clone 3D4B2

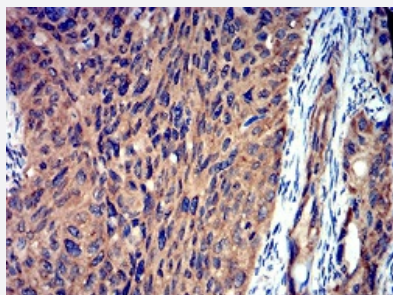
Catalog # MAB17504      Size 100 ug

## Applications



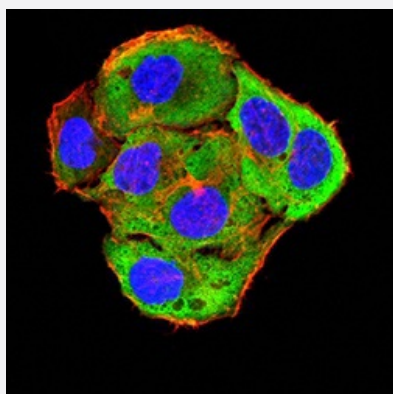
### Western Blot (Transfected lysate)

Western blot analysis of (1) HEK293 cells, (2) ROP1-hlgGfc transfected HEK293 cell lysate.



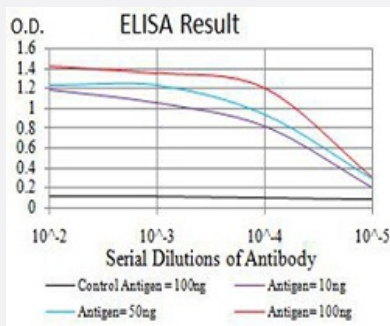
### Immunohistochemistry (Formalin/PFA-fixed paraffin-embedded sections)

Immunohistochemical staining of paraffin-embedded cervical cancer tissue with Toxoplasma gondii ROP1 monoclonal antibody.



### Immunocytochemistry

Immunocytochemical staining of SMMC-7721 cells with Toxoplasma gondii ROP1 monoclonal antibody (green). DRAQ5 fluorescent DNA dye (blue). Actin filaments labeled with Alexa Fluor-555 phalloidin (red).



## Enzyme-linked Immunoabsorbent Assay

ELISA analysis of *Toxoplasma gondii* ROP1 monoclonal antibody, clone 3D4B2.

## Specification

<b>Product Description</b>	Mouse monoclonal antibody raised against <i>Toxoplasma gondii</i> rhopty protein ROP1.
<b>Immunogen</b>	Recombinant protein corresponding to amino acid 42-183 of human <i>Toxoplasma gondii</i> rhopty protein ROP1 from <i>E. coli</i> .
<b>Host</b>	Mouse
<b>Theoretical MW (kDa)</b>	42.6
<b>Reactivity</b>	Human
<b>Form</b>	Liquid
<b>Isotype</b>	IgG2a
<b>Recommend Usage</b>	ELISA (1:10000) Western Blot (1:500-1:2000) Immunocytochemistry (1:200-1:1000) Flow Cytometry Immunohistochemistry (1:200-1:1000) The optimal working dilution should be determined by the end user.
<b>Storage Buffer</b>	In PBS (0.05% sodium azide).
<b>Storage Instruction</b>	Store at 4°C. For long term storage store at -20°C. Aliquot to avoid repeated freezing and thawing.
<b>Note</b>	This product contains sodium azide: a POISONOUS AND HAZARDOUS SUBSTANCE which should be handled by trained staff only.

## Applications

- Western Blot (Transfected lysate)

Western blot analysis of (1) HEK293 cells, (2) ROP1-hlgGfc transfected HEK293 cell lysate.

- Immunohistochemistry (Formalin/PFA-fixed paraffin-embedded sections)

Immunohistochemical staining of paraffin-embedded cervical cancer tissue with Toxoplasma gondii ROP1 monoclonal antibody.

- Immunocytochemistry

Immunocytochemical staining of SMMC-7721 cells with Toxoplasma gondii ROP1 monoclonal antibody (green). DRAQ5 fluorescent DNA dye (blue). Actin filaments labeled with Alexa Fluor-555 phalloidin (red).

- Enzyme-linked Immunoabsorbent Assay

ELISA analysis of Toxoplasma gondii ROP1 monoclonal antibody, clone 3D4B2.

## Gene Info — ROP1

Entrez GeneID [7895574](#)

Gene Name ROP1

Gene Alias

Gene Description rhoptry protein ROP1

Gene Ontology [Hyperlink](#)

## Publication Reference

- [High-throughput identification of Toxoplasma gondii effector proteins that target host cell transcription.](#)

Simon Butterworth, Kristina Kordova, Sambamurthy Chandrasekaran, Kaitlin K Thomas, Francesca Torelli, Eloise J Lockyer, Amelia Edwards, Robert Goldstone, Anita A Koshy, Moritz Treeck.

Cell Host & Microbe 2023 Oct; 31(10):1748.

Application: IF, Parasite, toxoplasma gondii

- [Toxoplasma gondii virulence factor ROP1 reduces parasite susceptibility to murine and human innate immune restriction.](#)

Simon Butterworth, Francesca Torelli, Eloise J Lockyer, Jeanette Wagener, Ok-Ryul Song, Malgorzata Broncel, Matt R G Russell, Aline Cristina A Moreira-Souza, Joanna C Young, Moritz Treeck.

PLoS Pathogens 2022 Dec; 18(12):e1011021.

Application: Co-IP, IF, WB-Ti, Human, Mouse, Human foreskin fibroblasts, Mouse embryonic fibroblasts