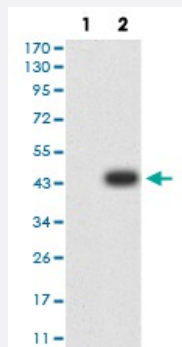


# FLJ32810 monoclonal antibody, clone 2F1A7

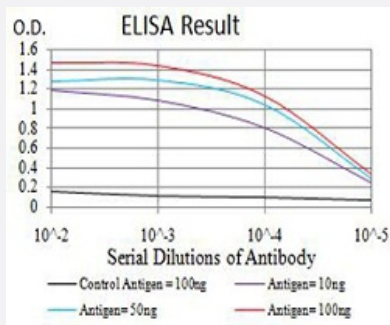
Catalog # MAB17502      Size 100 ug

## Applications



### Western Blot (Transfected lysate)

Western blot analysis of (1) HEK293 cells, (2) FLJ32810-hlgGfC transfected HEK293 cell lysate.



### Enzyme-linked Immunoabsorbent Assay

ELISA analysis of FLJ32810 monoclonal antibody, clone 2F1A7.

## Specification

Product Description	Mouse monoclonal antibody raised against recombinant human FLJ32810.
Immunogen	Recombinant protein corresponding to amino acid 577-719 of human FLJ32810 from <i>E. coli</i> .
Host	Mouse
Theoretical MW (kDa)	98.6
Reactivity	Human
Form	Liquid
Isotype	IgG1

<b>Recommend Usage</b>	ELISA (1:10000) Western Blot (1:500-1:2000) Immunocytochemistry Flow Cytometry Immunohistochemistry The optimal working dilution should be determined by the end user.
<b>Storage Buffer</b>	In PBS (0.05% sodium azide).
<b>Storage Instruction</b>	Store at 4°C. For long term storage store at -20°C. Aliquot to avoid repeated freezing and thawing.
<b>Note</b>	This product contains sodium azide: a POISONOUS AND HAZARDOUS SUBSTANCE which should be handled by trained staff only.

## Applications

- Western Blot (Transfected lysate)

Western blot analysis of (1) HEK293 cells, (2) FLJ32810-hlgGFc transfected HEK293 cell lysate.

- Enzyme-linked Immunoabsorbent Assay

ELISA analysis of FLJ32810 monoclonal antibody, clone 2F1A7.

## Gene Info — FLJ32810

<b>Entrez GeneID</b>	<a href="#">143872</a>
<b>Gene Name</b>	FLJ32810
<b>Gene Alias</b>	-
<b>Gene Description</b>	hypothetical protein FLJ32810
<b>Gene Ontology</b>	<a href="#">Hyperlink</a>
<b>Other Designations</b>	hypothetical protein LOC143872

## Disease

- [Tobacco Use Disorder](#)