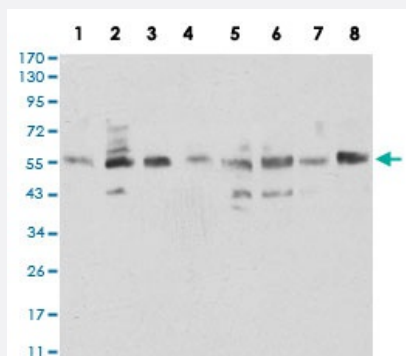


ARD1A monoclonal antibody, clone 3G3E9

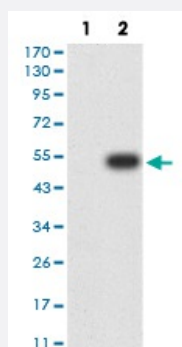
Catalog # MAB17498 Size 100 ug

Applications



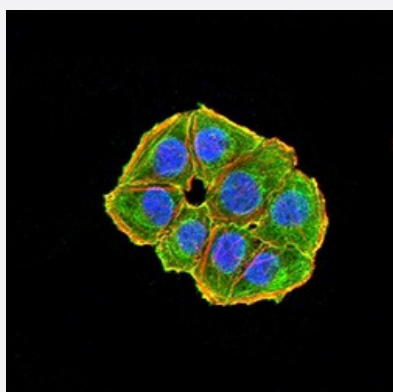
Western Blot (Cell lysate)

Western blot analysis of (1) HCT116 cell, (2) COS7 cell, (3) HEK293 cell, (4) HL-60 cell, (5) MCF-7 cell, (6) Hela cell, (7) NIH/3T3 cell, (8) C2C12 cell with ARD1A monoclonal antibody.



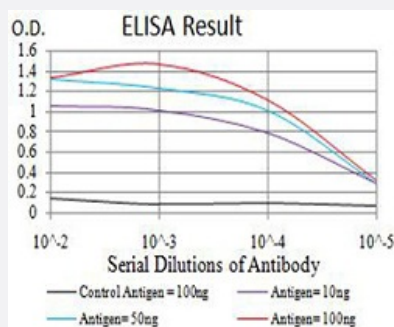
Western Blot (Transfected lysate)

Western blot analysis of (1) HEK293 cells, (2) ARD1A-hlgGfc transfected HEK293 cell lysate.



Immunocytochemistry

Immunocytochemical staining of HeLa cells with ARD1A monoclonal antibody (green). DRAQ5 fluorescent DNA dye (blue). Actin filaments labeled with Alexa Fluor-555 phalloidin (red).



Enzyme-linked Immunoabsorbent Assay

ELISA analysis of ARD1A monoclonal antibody, clone 3G3E9.

Specification

Product Description	Mouse monoclonal antibody raised against recombinant human ARD1A.
Immunogen	Recombinant protein corresponding to amino acid 111-235 of human ARD1A from <i>E. coli</i> .
Host	Mouse
Theoretical MW (kDa)	26.5
Reactivity	Human, Monkey, Mouse
Form	Liquid
Isotype	IgG1
Recommend Usage	ELISA (1:10000) Western Blot (1:500-1:2000) Immunocytochemistry (1:200-1:1000) Flow Cytometry Immunohistochemistry The optimal working dilution should be determined by the end user.
Storage Buffer	In PBS (0.05% sodium azide).
Storage Instruction	Store at 4°C. For long term storage store at -20°C. Aliquot to avoid repeated freezing and thawing.
Note	This product contains sodium azide: a POISONOUS AND HAZARDOUS SUBSTANCE which should be handled by trained staff only.

Applications

- Western Blot (Cell lysate)

Western blot analysis of (1) HCT116 cell, (2) COS7 cell, (3) HEK293 cell, (4) HL-60 cell, (5) MCF-7 cell, (6) HeLa cell, (7) NIH/3T3 cell, (8) C2C12 cell with ARD1A monoclonal antibody.

- Western Blot (Transfected lysate)

Western blot analysis of (1) HEK293 cells, (2) ARD1A-hlgGfC transfected HEK293 cell lysate.

- Immunocytochemistry

Immunocytochemical staining of HeLa cells with ARD1A monoclonal antibody (green). DRAQ5 fluorescent DNA dye (blue). Actin filaments labeled with Alexa Fluor-555 phalloidin (red).

- Enzyme-linked Immunoabsorbent Assay

ELISA analysis of ARD1A monoclonal antibody, clone 3G3E9.

Gene Info — ARD1A

Entrez GeneID [8260](#)

Gene Name ARD1A

Gene Alias ARD1, DXS707, MGC71248, TE2

Gene Description ARD1 homolog A, N-acetyltransferase (S. cerevisiae)

Omim ID [300013](#)

Gene Ontology [Hyperlink](#)

Gene Summary N-alpha-acetylation is one of the most common protein modifications that occurs during protein synthesis and involves the transfer of an acetyl group from acetyl-coenzyme A to the protein alpha-amino group. ARD1A, together with NATH (NARG1; MIM 608000), is part of a major N-alpha-acetyltransferase complex responsible for alpha-acetylation of proteins and peptides (Sanchez-Puig and Fersht, 2006 [PubMed 16823041]).[supplied by OMIM]

Other Designations ARD1 homolog, N-acetyltransferase|N-acetyltransferase ARD1|N-acetyltransferase ARD1, human homolog of|OTTHUMP00000026001

Pathway

- [1- and 2-Methylnaphthalene degradation](#)
- [Benzoate degradation via CoA ligation](#)

- [Glycerophospholipid metabolism](#)
- [Limonene and pinene degradation](#)
- [Phenylalanine metabolism](#)
- [Tyrosine metabolism](#)

Disease

- [Cardiovascular Diseases](#)
- [Diabetes Mellitus](#)
- [Edema](#)