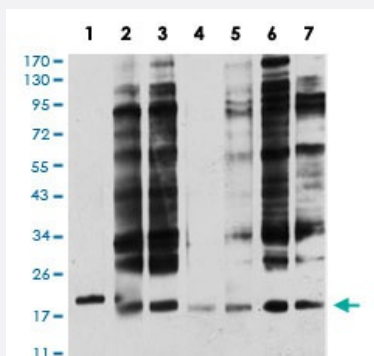


ANAPC10 monoclonal antibody, clone 3E9A9

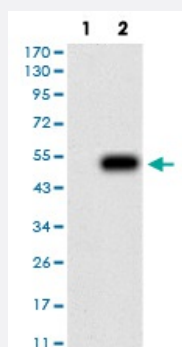
Catalog # MAB17486 Size 100 ug

Applications



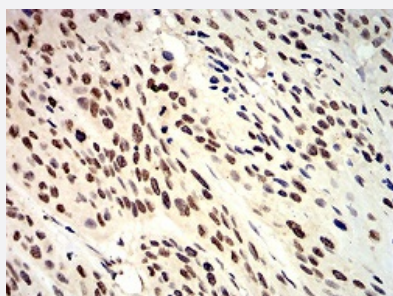
Western Blot (Cell lysate)

Western blot analysis of (1) Jurkat cell, (2) MCF-7 cell, (3) SK-Br-3 cell, (4) A431 cell, (5) HEK293 cell, (6) A549 cell, (7) SPC-A-1 cell with ANAPC10 monoclonal antibody.



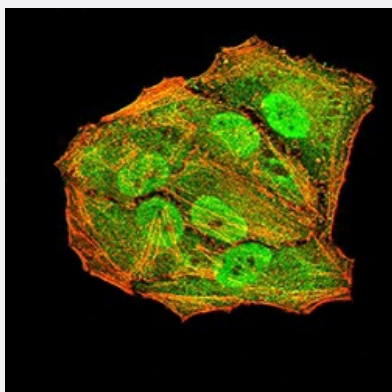
Western Blot (Transfected lysate)

Western blot analysis of (1) HEK293 cells, (2) ANAPC10-hlgGfc transfected HEK293 cell lysate.



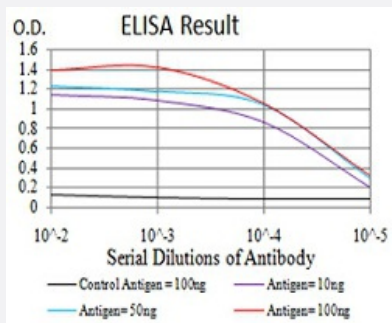
Immunohistochemistry (Formalin/PFA-fixed paraffin-embedded sections)

Immunohistochemical staining of paraffin-embedded esophageal cancer tissues with ANAPC10 monoclonal antibody.



Immunocytochemistry

Immunocytochemical staining of HeLa cells with ANAPC10 monoclonal antibody (green). DRAQ5 fluorescent DNA dye (blue). Actin filaments labeled with Alexa Fluor-555 phalloidin (red).



Enzyme-linked Immunoabsorbent Assay

ELISA analysis of ANAPC10 monoclonal antibody, clone 3E9A9.

Specification

Product Description	Mouse monoclonal antibody raised against recombinant human ANAPC10.
Immunogen	Recombinant protein corresponding to amino acid 1-185 of human ANAPC10 from <i>E. coli</i> .
Host	Mouse
Theoretical MW (kDa)	21.3
Reactivity	Human
Form	Liquid
Isotype	IgG1
Recommend Usage	ELISA (1:10000) Western Blot (1:500-1:2000) Immunohistochemistry (1:200-1:1000) Immunocytochemistry (1:200-1:1000) Flow Cytometry The optimal working dilution should be determined by the end user.
Storage Buffer	In PBS (0.05% sodium azide).

Storage Instruction

Store at 4°C. For long term storage store at -20°C.
Aliquot to avoid repeated freezing and thawing.

Note

This product contains sodium azide: a POISONOUS AND HAZARDOUS SUBSTANCE which should be handled by trained staff only.

Applications

- Western Blot (Cell lysate)

Western blot analysis of (1) Jurkat cell, (2) MCF-7 cell, (3) SK-BR-3 cell, (4) A431 cell, (5) HEK293 cell, (6) A549 cell, (7) SPC-A-1 cell with ANAPC10 monoclonal antibody.

- Western Blot (Transfected lysate)

Western blot analysis of (1) HEK293 cells, (2) ANAPC10-hlgGfc transfected HEK293 cell lysate.

- Immunohistochemistry (Formalin/PFA-fixed paraffin-embedded sections)

Immunohistochemical staining of paraffin-embedded esophageal cancer tissues with ANAPC10 monoclonal antibody.

- Immunocytochemistry

Immunocytochemical staining of HeLa cells with ANAPC10 monoclonal antibody (green). DRAQ5 fluorescent DNA dye (blue). Actin filaments labeled with Alexa Fluor-555 phalloidin (red).

- Enzyme-linked Immunoabsorbent Assay

ELISA analysis of ANAPC10 monoclonal antibody, clone 3E9A9.

Gene Info — ANAPC10

Entrez GeneID [10393](#)

Gene Name ANAPC10

Gene Alias APC10, DKFZp564L0562, DOC1

Gene Description anaphase promoting complex subunit 10

Gene Ontology [Hyperlink](#)

Other Designations -

Pathway

- [Cell cycle](#)
- [Ubiquitin mediated proteolysis](#)