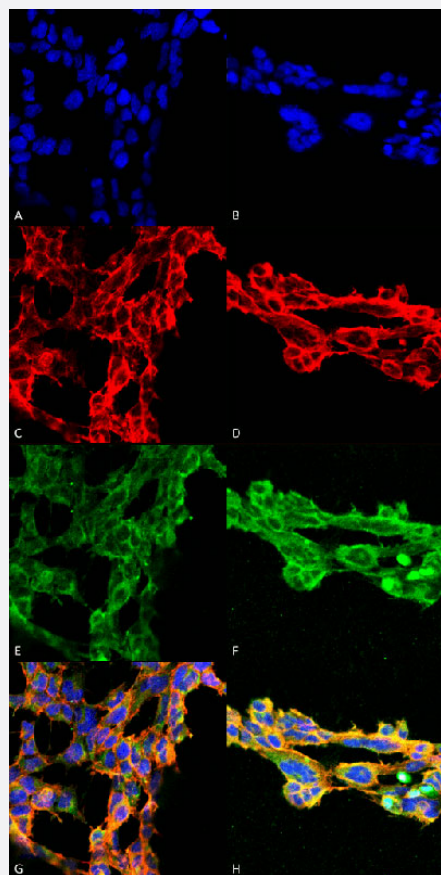


7-Ketocholesterol monoclonal antibody, clone 7E1 (APC)

Catalog # MAB17404 Size 100 ug

Applications



Immunocytochemistry

Immunocytochemical staining of HEK293 with 7-Ketocholesterol monoclonal antibody, clone 7E1 (APC) (Cat # MAB17404). (A, B) DAPI (blue) nuclear stain. (C, D) Phalloidin Alex Fluor 633 F-Actin stain. (E, F) 7-Ketocholesterol Antibody. (G, H) Composite. (A, C, E, G) Untreated and (B, D, F, H) Cells cultured overnight with 50 uM H₂O₂.

Specification

Product Description	Mouse monoclonal antibody raised against synthetic 7-Ketocholesterol (7-KC).
Immunogen	Synthetic 7-Ketocholesterol conjugated to Keyhole Limpet Hemocyanin (KLH).
Host	Mouse
Form	Liquid
Conjugation	APC

Purification	Protein G purification
Isotype	IgG2b
Recommend Usage	ELISA (1:1000) Immunocytochemistry (1:50) Immunofluorescence (1:50) Western Blot (1:1000) The optimal working dilution should be determined by the end user.
Storage Buffer	In PBS, pH 7.4 (50% glycerol, 0.09% sodium azide).
Storage Instruction	Store at -20°C.
Note	This product contains sodium azide: a POISONOUS AND HAZARDOUS SUBSTANCE which should be handled by trained staff only.

Applications

- Western Blot
- Immunocytochemistry
Immunocytochemical staining of HEK293 with 7-Ketocholesterol monoclonal antibody, clone 7E1 (APC) (Cat # MAB17404). (A, B) DAPI (blue) nuclear stain. (C, D) Phalloidin Alex Fluor 633 F-Actin stain. (E, F) 7-Ketocholesterol Antibody. (G, H) Composite. (A, C, E, G) Untreated and (B, D, F, H) Cells cultured overnight with 50 uM H2O2.
- Immunofluorescence
- Enzyme-linked Immunoabsorbent Assay