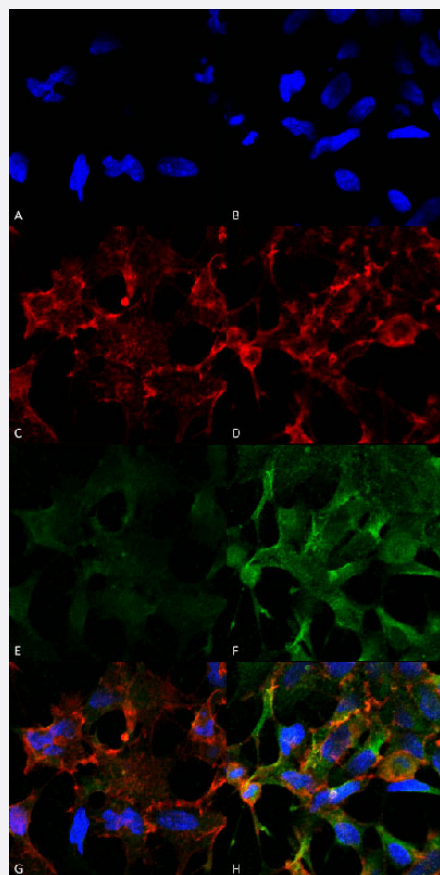


# Acrolein monoclonal antibody, clone 2H2 (FITC)

Catalog # MAB17384      Size 100 ug

## Applications

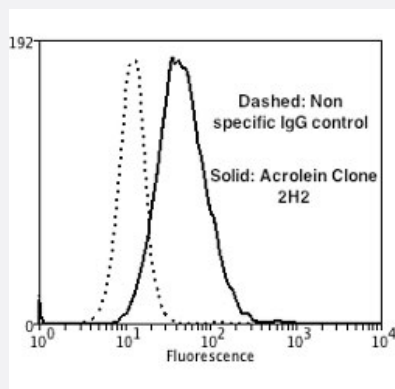


### Immunocytochemistry

Immunocytochemical staining of HEK293 with Acrolein monoclonal antibody, clone 2H2 (FITC) (Cat # MAB17384). (A, B) DAPI (blue) nuclear stain. (C, D) Phalloidin Alex Fluor 633 F-Actin stain. (E, F) Acrolein Antibody. (G, H) Composite. (A, C, E, G) Untreated and (B, D, F, H) Cells cultured overnight with 50 uM H<sub>2</sub>O<sub>2</sub>.

### Flow Cytometry

Flow cytometric analysis of SH-SY5Y with Acrolein monoclonal antibody, clone 2H2 (FITC) (Cat # MAB17384).



## Specification

<b>Product Description</b>	Mouse monoclonal antibody raised against synthetic peptide of Acrolein.
<b>Immunogen</b>	Synthetic Acrolein modified Keyhole Limpet Hemocyanin (KLH).
<b>Host</b>	Mouse
<b>Form</b>	Liquid
<b>Conjugation</b>	FITC
<b>Purification</b>	Protein G purification
<b>Isotype</b>	IgG1
<b>Recommend Usage</b>	ELISA (1:1000) Flow Cytometry Immunocytochemistry (1:50) Immunofluorescence (1:50) Western Blot (1:1000) The optimal working dilution should be determined by the end user.
<b>Storage Buffer</b>	In PBS, pH 7.4 (50% glycerol, 0.09% sodium azide).
<b>Storage Instruction</b>	Store at -20°C.
<b>Note</b>	This product contains sodium azide: a POISONOUS AND HAZARDOUS SUBSTANCE which should be handled by trained staff only.

## Applications

- Western Blot

- Immunocytochemistry

Immunocytochemical staining of HEK293 with Acrolein monoclonal antibody, clone 2H2 (FITC) (Cat # MAB17384). (A, B) DAPI (blue) nuclear stain. (C, D) Phalloidin Alex Fluor 633 F-Actin stain. (E, F) Acrolein Antibody. (G, H) Composite. (A, C, E, G) Untreated and (B, D, F, H) Cells cultured overnight with 50  $\mu$ M H<sub>2</sub>O<sub>2</sub>.

- Immunofluorescence

- Enzyme-linked Immunoabsorbent Assay

- Flow Cytometry

Flow cytometric analysis of SH-SY5Y with Acrolein monoclonal antibody, clone 2H2 (FITC) (Cat # MAB17384).