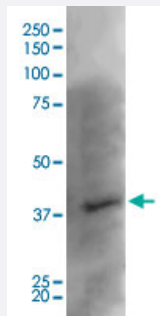


Kcnj8 monoclonal antibody, clone S366-60 (HRP)

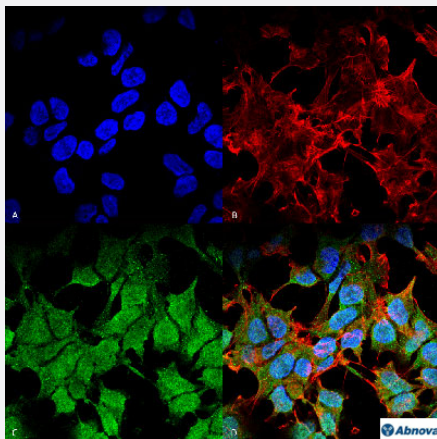
Catalog # MAB17361 Size 100 ug

Applications



Western Blot (Tissue lysate)

Western Blot analysis of rat brain with Kcnj8 monoclonal antibody, clone S366-60 (HRP) (Cat # MAB17361).



Immunocytochemistry

Immunocytochemical staining of SK-N-BE with Kcnj8 monoclonal antibody, clone S366-60 (HRP) (Cat # MAB17361). (A) DAPI (blue) nuclear stain. (B) Phalloidin Texas Red F-Actin stain. (C) Kcnj8 Antibody. (D) Composite.

Specification

| | |
|----------------------------|--|
| Product Description | Mouse monoclonal antibody raised against partial recombinant rat Kcnj8. |
| Immunogen | Recombinant protein corresponding to amino acids 306-424 at C-terminus of rat Kcnj8. |
| Host | Mouse |
| Reactivity | Rat |
| Form | Liquid |

| | |
|---------------------|--|
| Conjugation | HRP |
| Purification | Protein G purification |
| Isotype | IgG2a |
| Recommend Usage | Immunocytochemistry (1:100) Immunofluorescence (1:100) Immunohistochemistry (Formalin/PFA-fixed paraffin-embedded sections) Western Blot (1:1000) The optimal working dilution should be determined by the end user. |
| Storage Buffer | In PBS, pH 7.4 (50% glycerol, 0.09% sodium azide). |
| Storage Instruction | Store at -20°C. |
| Note | This product contains sodium azide: a POISONOUS AND HAZARDOUS SUBSTANCE which should be handled by trained staff only. |

Applications

- Western Blot (Tissue lysate)

Western Blot analysis of rat brain with Kcnj8 monoclonal antibody, clone S366-60 (HRP) (Cat # MAB17361).

- Immunohistochemistry (Formalin/PFA-fixed paraffin-embedded sections)

- Immunocytochemistry

Immunocytochemical staining of SK-N-BE with Kcnj8 monoclonal antibody, clone S366-60 (HRP) (Cat # MAB17361). (A) DAPI (blue) nuclear stain. (B) Phalloidin Texas Red F-Actin stain. (C) Kcnj8 Antibody. (D) Composite.

- Immunofluorescence

Gene Info — Kcnj8

| | |
|--------------------|--|
| Entrez GeneID | 25472 |
| Protein Accession# | Q63664 |
| Gene Name | Kcnj8 |
| Gene Alias | Kir6.1, UKATP1, uKATP-1 |
| Gene Description | potassium inwardly-rectifying channel, subfamily J, member 8 |

Gene Ontology

[Hyperlink](#)

Gene Summary

subfamily J

Other Designations

Inwardly rectifying potassium channel gene subfamily J-8 (ATP sensitive)|Inwardly rectifying potassium channel gene, subfamily J-8 (ATP sensitive)

Publication Reference

- [Heterogeneity of IK1 in the mouse heart.](#)

Panama BK, McLerie M, Lopatin AN.

American Journal of Physiology. Heart and Circulatory Physiology 2007 Dec; 293(6):H3558.

- [Kir2.3 isoform confers pH sensitivity to heteromeric Kir2.1/Kir2.3 channels in HEK293 cells.](#)

Munoz V, Vaidyanathan R, Tolkacheva EG, Dhamoon AS, Taffet SM, Anumonwo JM.

Heart Rhythm 2007 Apr; 4(4):487.

- [Molecular dissection of the inward rectifier potassium current \(IK1\) in rabbit cardiomyocytes: evidence for heteromeric co-assembly of Kir2.1 and Kir2.2.](#)

Zobel C, Cho HC, Nguyen TT, Pekhletski R, Diaz RJ, Wilson GJ, Backx PH.

The Journal of Physiology 2003 Jul; 550(Pt 2):365.

- [Toward understanding the assembly and structure of KATP channels.](#)

Aguilar-Bryan L, Clement JP 4th, Gonzalez G, Kunjilwar K, Babenko A, Bryan J.

Physiological Reviews 1998 Jan; 78(1):227.