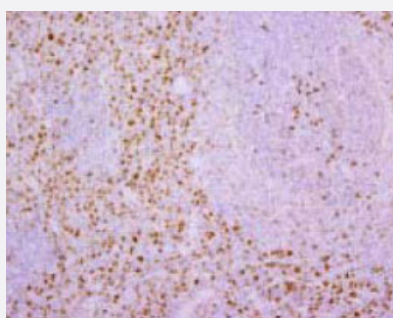


Macrophage/Dendritic Cells monoclonal antibody, clone RM-4

Catalog # MAB1734

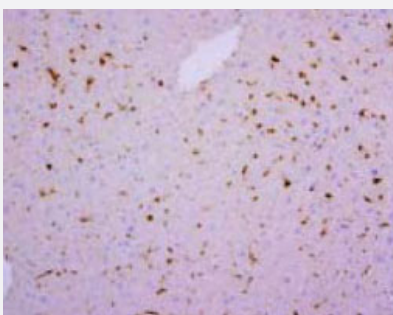
Size 50 ug

Applications



Immunohistochemistry (Frozen sections)

Immunohistochemical analysis of rat spleen tissue, using Macrophage/Dendritic Cells monoclonal antibody, clone RM-4 (Cat # MAB1734) .



Immunohistochemistry (Frozen sections)

Immunohistochemical analysis of rat liver tissue, using Macrophage/Dendritic Cells monoclonal antibody, clone RM-4 (Cat # MAB1734) .

Specification

Product Description	Mouse monoclonal antibody raised against Macrophage/Dendritic Cells.
Immunogen	Native from homogenate of silica-induced lung granuloma of rat.
Host	Mouse
Form	Liquid
Isotype	IgG1
Quality Control Testing	Antibody Reactive Against Macrophage/Dendritic Cells.

Recommend Usage	Immunohistochemistry (10 ug/mL) The optimal working dilution should be determined by the end user.
Storage Buffer	In PBS (0.1% proclin, 2.0% Block Ace)
Storage Instruction	Store at -20°C. Aliquot to avoid repeated freezing and thawing.

Applications

- Immunohistochemistry (Frozen sections)

Immunohistochemical analysis of rat spleen tissue, using Macrophage/Dendritic Cells monoclonal antibody, clone RM-4 (Cat # MAB1734) .

- Immunohistochemistry (Frozen sections)

Immunohistochemical analysis of rat liver tissue, using Macrophage/Dendritic Cells monoclonal antibody, clone RM-4 (Cat # MAB1734) .

Publication Reference

- [A novel monoclonal antibody, RM-4, specifically recognizes rat macrophages and dendritic cells in formalin-fixed, paraffin-embedded tissues.](#)

Iyonaga K, Takeya M, Yamamoto T, Ando M, Takahashi K.

The Histochemical Journal 1997 Feb; 29(2):105.

Application: ICC, IEM, IHC-Fr, IHC-P, WB-Ce, Rat, Dendritic cells, Macrophages, Spleens